



T&S BRASS AND BRONZE WORKS, INC.

2 Saddleback Cove / P.O. Box 1088
Travelers Rest, SC 29690



REG. #A2601
ISO #9001

Model No.

B-0113-A-08 SERIES

Item No.

Travelers Rest, SC: 800-476-4103 Simi Valley, CA: 800-423-0150 Fax: 864-834-3518 www.tsbrass.com

This Space for Architect/Engineer Approval

Job Name _____ Date _____

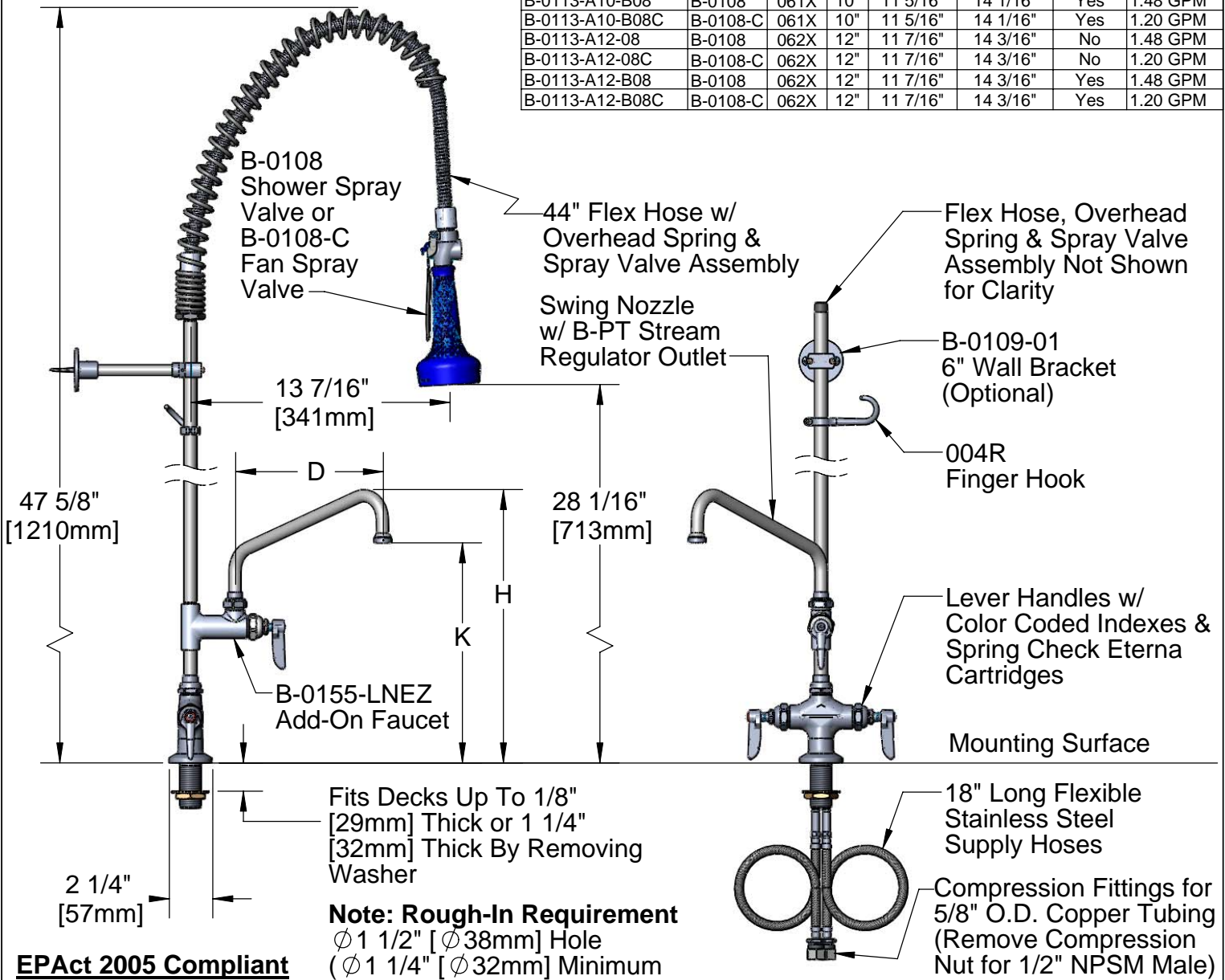
Model Specified _____ Quantity _____

Customer/Wholesaler _____

Contractor _____

Architect/Engineer _____

Model	Spray Valve	Swing Nozzle	D	K	H	6" Wall Bracket	Flow Rate
B-0113-A06-08	B-0108	059X	6"	10 1/16"	12 13/16"	No	1.48 GPM
B-0113-A06-08C	B-0108-C	059X	6"	10 1/16"	12 13/16"	No	1.20 GPM
B-0113-A06-B08	B-0108	059X	6"	10 1/16"	12 13/16"	Yes	1.48 GPM
B-0113-A06-B08C	B-0108-C	059X	6"	10 1/16"	12 13/16"	Yes	1.20 GPM
B-0113-A08-08	B-0108	060X	8"	10 5/8"	13 3/8"	No	1.48 GPM
B-0113-A08-08C	B-0108-C	060X	8"	10 5/8"	13 3/8"	No	1.20 GPM
B-0113-A08-B08	B-0108	060X	8"	10 5/8"	13 3/8"	Yes	1.48 GPM
B-0113-A08-B08C	B-0108-C	060X	8"	10 5/8"	13 3/8"	Yes	1.20 GPM
B-0113-A10-08	B-0108	061X	10"	11 5/16"	14 1/16"	No	1.48 GPM
B-0113-A10-08C	B-0108-C	061X	10"	11 5/16"	14 1/16"	No	1.20 GPM
B-0113-A10-B08	B-0108	061X	10"	11 5/16"	14 1/16"	Yes	1.48 GPM
B-0113-A10-B08C	B-0108-C	061X	10"	11 5/16"	14 1/16"	Yes	1.20 GPM
B-0113-A12-08	B-0108	062X	12"	11 7/16"	14 3/16"	No	1.48 GPM
B-0113-A12-08C	B-0108-C	062X	12"	11 7/16"	14 3/16"	No	1.20 GPM
B-0113-A12-B08	B-0108	062X	12"	11 7/16"	14 3/16"	Yes	1.48 GPM
B-0113-A12-B08C	B-0108-C	062X	12"	11 7/16"	14 3/16"	Yes	1.20 GPM



EPAct 2005 Compliant

Product Specifications:

EasyInstall Pre-Rinse Unit:
Single Deck Mount Base Mixing Faucet, Flexible Supply Hoses,
24" Riser, Overhead Spring, 44" Flex Hose, B-0108 / B-0108-C
Spray Valve & Wall Bracket (Optional)

Drawn KJG	Checked DHL	Approved JHB
Scale: 1:8		Date: 01/08/09



T&S BRASS AND BRONZE WORKS, INC.

2 Saddleback Cove / P.O. Box 1088
Travelers Rest, SC 29690



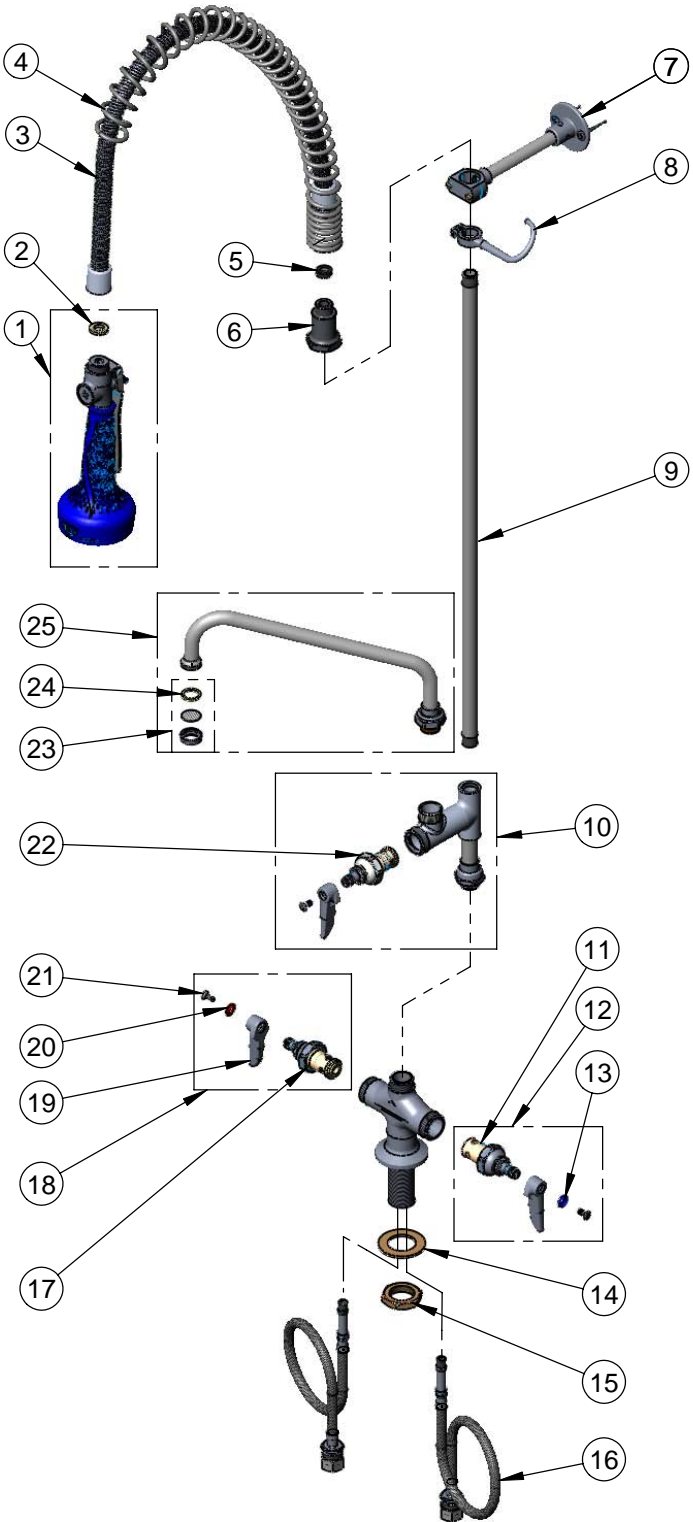
REG. #A2601
ISO #9001

Model No.

B-0113-A-08 SERIES

Item No.

Travelers Rest, SC: 800-476-4103 Simi Valley, CA: 800-423-0150 Fax: 864-834-3518 www.tsbrass.com



ITEM NO.	SALES NO.	DESCRIPTION
1	See Chart	Spray Valve
2	001014-45	Washer, B-0100 Hose Barrel
3	B-0044-H2A	44" Flex Hose Assembly, Less Handle
4	000888-45	EasyInstall Overhead Spring
5	010476-45	#27 Washer
6	000821-40	Spring Body
7	B-0109-01	6" Wall Bracket Assembly
8	004R	Finger Hook Assembly
9	000372-40	3/8" NPT x 24" Long Riser
10	B-0155-LNEZ	Easy-Install Add-On Faucet
11	012442-40	Cold Eterna Spindle Assembly w/ Spring Check
12	002711-40	Cold Eterna Spindle Asm w/ Spring Check, Handle, Index & Screw
13	001660-45	Blue Index-CW
14	002290-45	Lock Washer
15	000965-45	Lock Nut
16	012534-45	Flexible Connector Hose
17	012443-40	Hot Eterna Spindle Assembly w/ Spring Check
18	002712-40	Hot Eterna Spindle Asm w/ Spring Check, Handle, Index & Screw
19	001638-45	Lever Handle
20	001661-45	Red Index-HW
21	000922-45	Lever Handle Screw
22	007947-40	Quarter Turn Spindle Assembly
23	B-PT	Stream Regulator Outlet
24	001048-45	Nozzle Tip Washer
25	See Chart	Swing Nozzle

Product Specifications:

EasyInstall Pre-Rinse Unit:
Single Deck Mount Base Mixing Faucet, Flexible Supply Hoses, 24" Riser, Overhead Spring, 44" Flex Hose, B-0108 / B-0108-C Spray Valve & Wall Bracket (Optional)

Drawn KJG	Checked DHL	Approved JHB
Scale: NTS		Date: 01/08/09