



# T&S BRASS AND BRONZE WORKS, INC.

2 Saddleback Cove / P.O. Box 1088  
Travelers Rest, SC 29690



REG. #A2601  
ISO #9001

Model No.  
**B-0892-LF05-XP**

Item No.

Travelers Rest, SC: 800-476-4103 Simi Valley, CA: 800-423-0150 Fax: 864-834-3518 www.tsbrass.com

This Space for Architect/Engineer Approval

Job Name \_\_\_\_\_ Date \_\_\_\_\_

Model Specified \_\_\_\_\_ Quantity \_\_\_\_\_

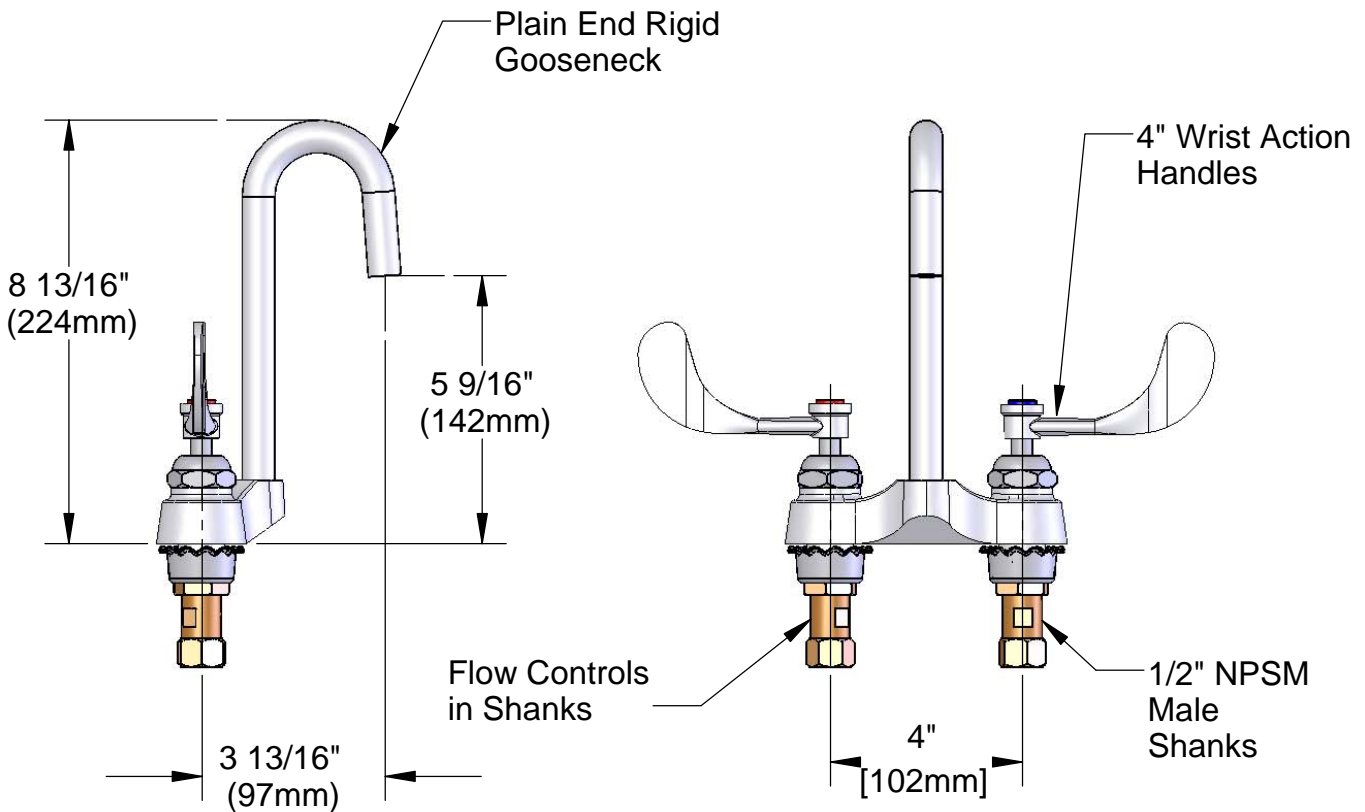
Customer/Wholesaler \_\_\_\_\_

Contractor \_\_\_\_\_

Architect/Engineer \_\_\_\_\_

Variations or Applicable Options:

- WH6 6" Wrist Action Handles
- 177F Lever Handles
- 175F 4-Arm Kitchen Handles



Product Specifications:  
4" Centerset Mixing Faucet w/ 1/2" NPSM Male Flow Control Shanks, 0.5 GPM, Eterna Cartridges, 4" Wrist Action Handles, Plain End Rigid Gooseneck

Drawn WJS	Checked JRM	Approved JHB
Scale: 1:4		Date: 3/13/2006



**T&S BRASS AND BRONZE WORKS, INC.**

2 Saddleback Cove / P.O. Box 1088  
Travelers Rest, SC 29690

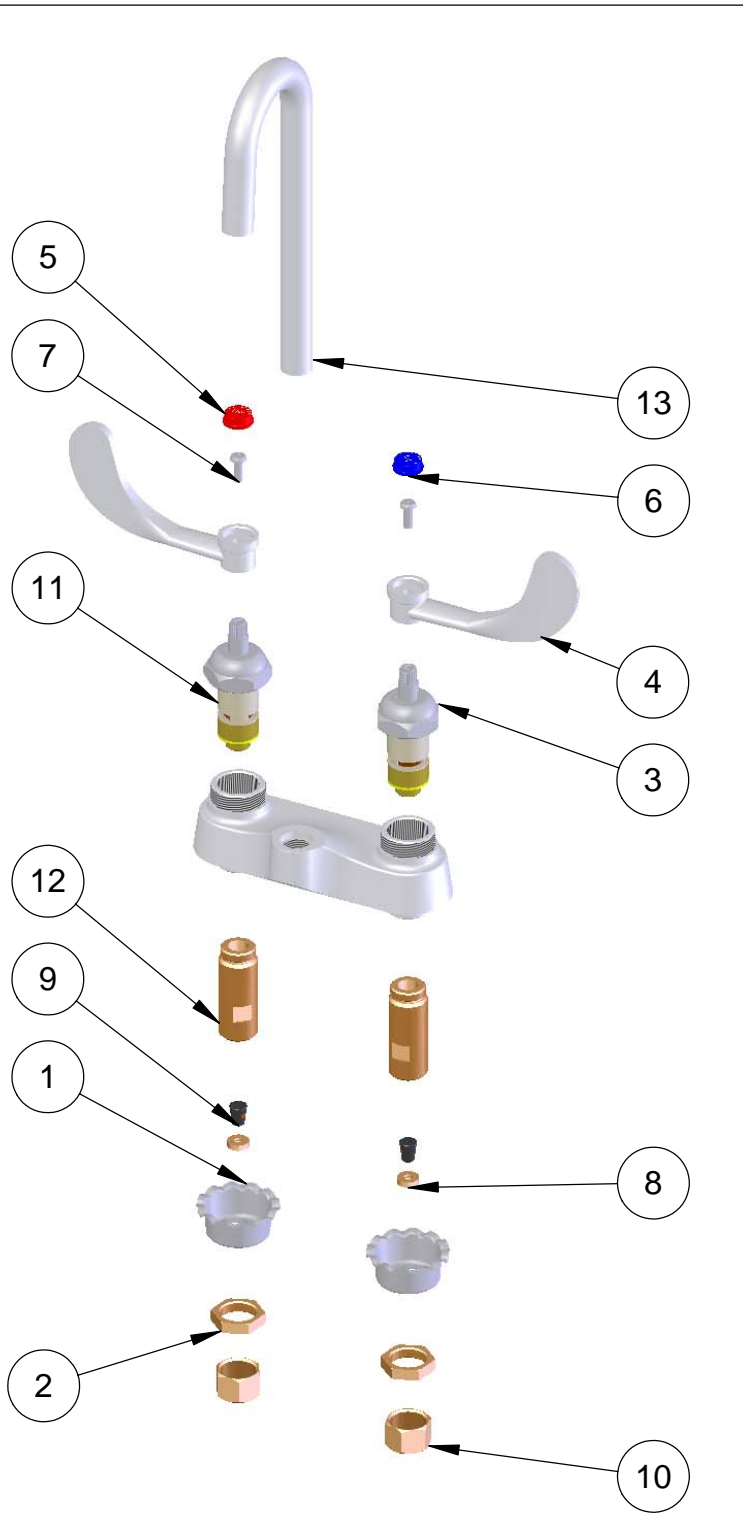


REG. #A2601  
ISO #9001

Model No.  
**B-0892-LF05-XP**

Item No.

Travelers Rest, SC: 800-476-4103 Simi Valley, CA: 800-423-0150 Fax: 864-834-3518 www.tsbrass.com



ITEM NO.	SALES NO.	DESCRIPTION
1	001000-45	Rosette Washer
2	002954-45	Shank Lock Nut
3	011278-25	Ceramic Cartridge
4	B-WH4	4" Wrist Action Handle
5	001194-45	Red HW Index
6	001686-45	Blue CW Index
7	000925-45	Lab Handle Screw
8	009069-45	Flow Control Holder
9	001640-45	Flow Tower, 0.5 GPM
10	000958-20	Coupling Nut
11	011279-25	Ceramic Cartridge
13	006632-40	Rigid GN

Product Specifications:  
4" Centerset Mixing Faucet w/ 1/2" NPSM Male Flow Control Shanks, 0.5 GPM, Eterna Cartridges, 4" Wrist Action Handles, Plain End Rigid Gooseneck

Drawn WJS	Checked JRM	Approved JHB
Scale: 1:4		Date: 3/13/2006