

T&S BRASS AND BRONZE WORKS, INC.
 2 SADDLEBACK COVE / P.O. BOX 1088 / TRAVELERS REST, SC 29690
 PHONE 800-476-4103 - FAX 864- 834-3518



REG.#A2601
 ISO #9001

Model No.

B-0114-02C-B

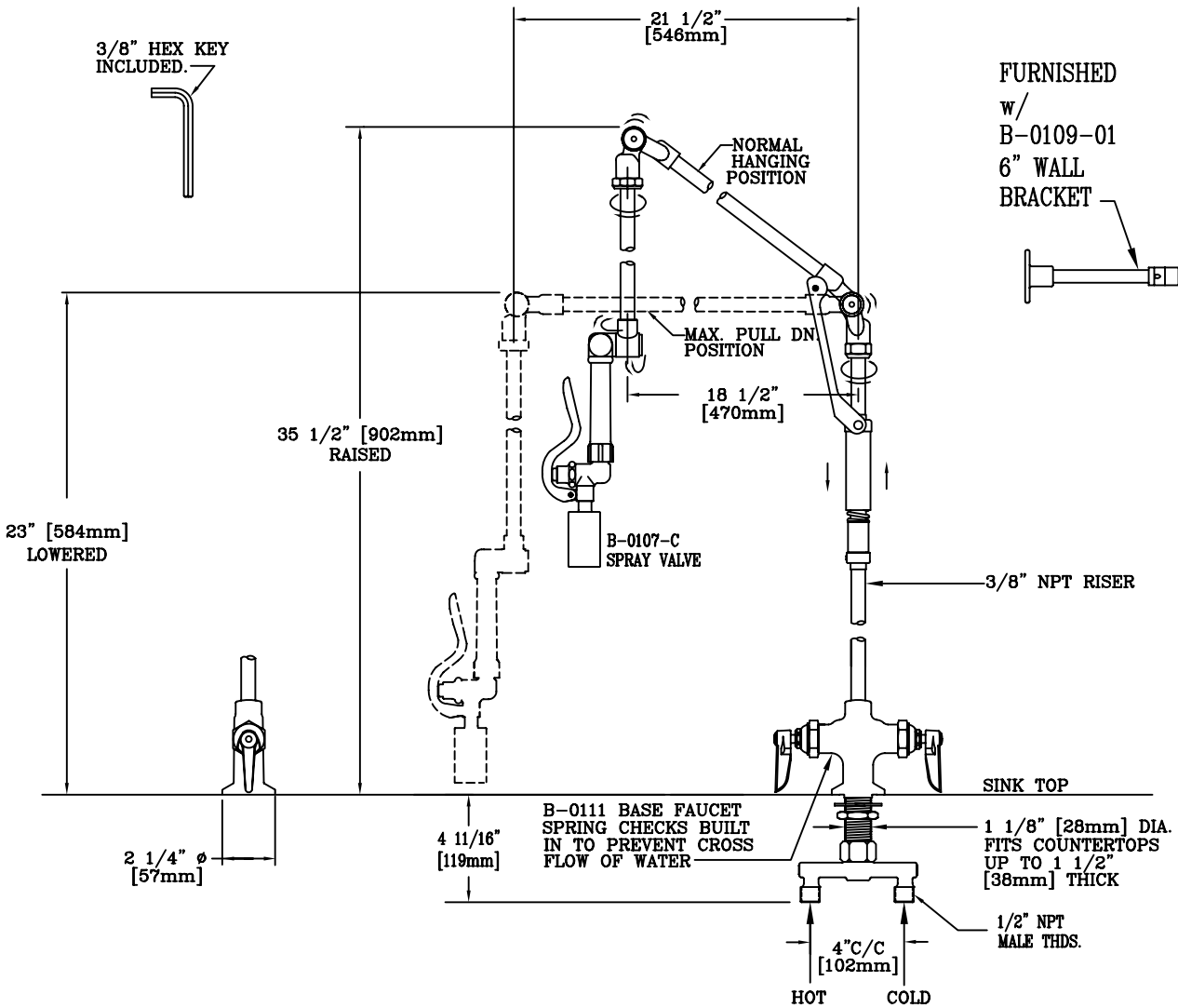
**RELIABILITY
 BUILT IN**

Job Name:

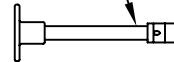
Architect/Engineer Approval:

Notes:

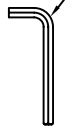
EPAct2005 COMPLIANT



FURNISHED
 w/
 B-0109-01
 6" WALL
 BRACKET



3/8" HEX KEY
 INCLUDED.



23" [584mm]
 LOWERED

35 1/2" [902mm]
 RAISED

21 1/2" [546mm]

NORMAL
 HANGING
 POSITION

MAX. PULL DN
 POSITION

18 1/2" [470mm]

B-0107-C
 SPRAY VALVE

3/8" NPT RISER

SINK TOP

B-0111 BASE FAUCET
 SPRING CHECKS BUILT
 IN TO PREVENT CROSS
 FLOW OF WATER

1 1/8" [28mm] DIA.
 FITS COUNTERTOPS
 UP TO 1 1/2" [38mm] THICK

1/2" NPT
 MALE THDS.

4" C/C [102mm]
 HOT COLD

2 1/4" ø [57mm]

4 11/16" [119mm]

150A TAILPIECE
 AND NUT FURNISHED
 FOR OPTIONAL
 1/4" NPT CONNECTION



Product Description:
 PRE-RINSE UNIT WITH RETRACTABLE ARM ASM.,
 B-0107-C SPRAY VALVE, 4" SPREADER ASM.
 WITH 1/2" NPT MALE INLETS, WALL BRACKET

Drawn:	Checked:	Scale:
DHL	WJS	1:8
Approved:	Date:	
JHB	8/4/06	