



T&S BRASS AND BRONZE WORKS, INC.
 2 SADDLEBACK COVE / P.O. BOX 1088 / TRAVELERS REST, SC 29690
 PHONE 800-476-4103 - FAX 864- 834-3518



Model No.

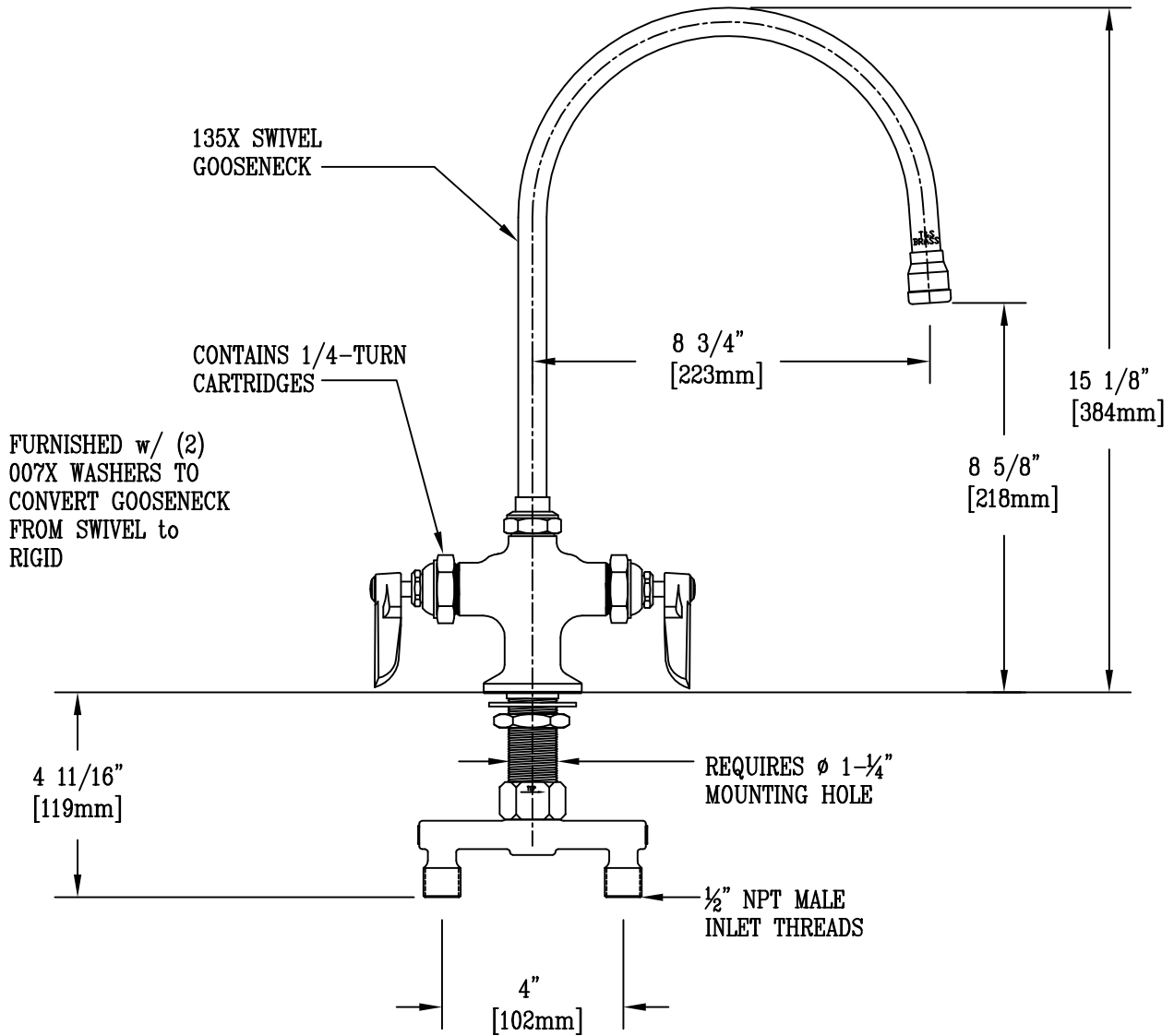
B-0224

**RELIABILITY
 BUILT IN**

Job Name:

Architect/Engineer Approval:

Notes:



FURNISHED w/ (2)
 007X WASHERS TO
 CONVERT GOOSENECK
 FROM SWIVEL to
 RIGID

135X SWIVEL
 GOOSENECK

CONTAINS 1/4-TURN
 CARTRIDGES

REQUIRES ϕ 1-1/4"
 MOUNTING HOLE

1/2" NPT MALE
 INLET THREADS

4"
 [102mm]

15 1/8"
 [384mm]

8 5/8"
 [218mm]



FURNISHED w/ (2) 007x WASHERS TO
 CONVERT SWING NOZZLE to RIGID. TO
 INSTALL: UNSCREW GOOSENECK, LIFT
 OUT, & PLACE WASHERS IN SWIVEL
 BODY. THEN RE-INSTALL GOOSENECK.



150A TAILPIECE
 AND NUT FURNISHED
 FOR OPTIONAL
 1/4" NPT CONNECTION

Product Description:

DOUBLE PANTRY FCT. w/ 135X SWIVEL GOOSENECK,
 QUARTER TURN CARTRIDGES, 007X WASHERS

Drawn:

WJS

Approved

JHB

Checked

LEL

Scale:

1 : 4

Date:

6/21/05