



T&S BRASS AND BRONZE WORKS, INC.

2 SADDLEBACK COVE / P.O. BOX 1088 / TRAVELERS REST, SC 29690

PHONE 800-476-4103

FAX 864- 834-3518



REG.#A2601
ISO #9002

Model No.

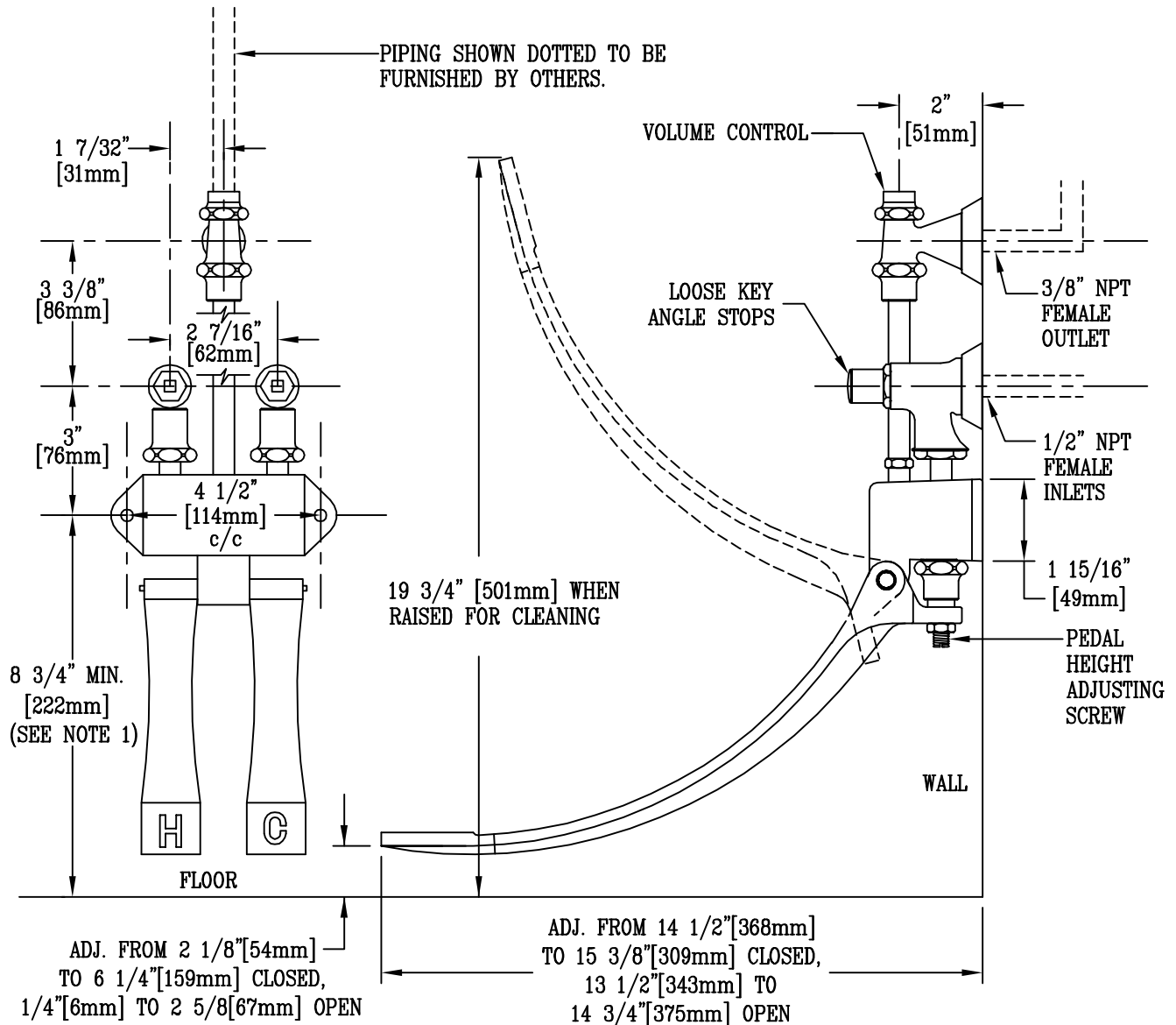
B-0504-01

Item No.:

Job Name:

Architect/Engineer Approval:

Notes:



NOTE 1. ALL PEDAL POSITION DIMENSIONS ARE BASED ON A RECOMMENDED MIN. MTG. HEIGHT OF 8 3/4" [222mm] ABOVE FIN. FLOOR

NOTE 2. FURNISHED WITH (2) WOOD MOUNTING SCREWS

Product Description:

DOUBLE PEDAL VALVE WITH LOOSE KEY ANGLE STOPS & VOLUME CONTROL

Drawn:

TME

Approved

MVW

Checked

MVW

Scale:

1 : 4

Date:

10/13/98