



T&S BRASS AND BRONZE WORKS, INC.
 2 SADDLEBACK COVE / P.O. BOX 1088 / TRAVELERS REST, SC 29690
 PHONE 800-476-4103 - FAX 864- 834-3518



REG.#A2601
 ISO #9001

Model No.

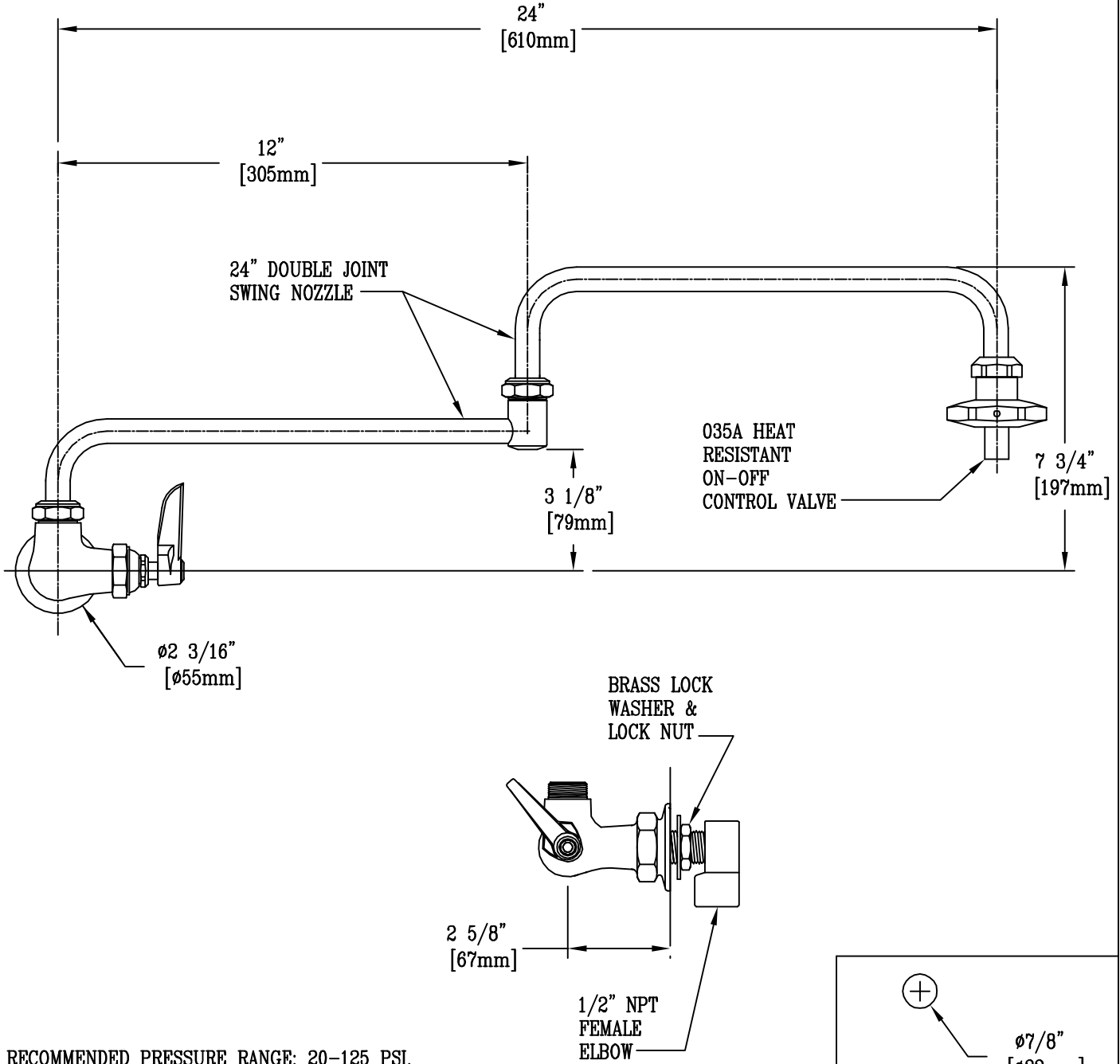
B-0582

**RELIABILITY
 BUILT IN**

Job Name:

Architect/Engineer Approval:

Notes:



RECOMMENDED PRESSURE RANGE: 20-125 PSI.
 MAX OPERATING TEMPERATURE 150° F.

Product Description:
 SINGLE TEMPERATURE SUPPLY WALL MOUNT FAUCET WITH
 1/2" NPT FEMALE INLET ELBOW, 24" DOUBLE JOINT
 SWING NOZZLE, & OUTLET FLOW ACTUATOR

Drawn:

WJS

Approved

MVW

Checked

LEL

Scale:

1 : 4

Date:

7/24/03