



**T&S BRASS AND BRONZE WORKS, INC.**

2 SADDLEBACK COVE / P.O. BOX 1088 / TRAVELERS REST, SC 29690

PHONE 800-476-4103

FAX 864-834-3518



REG. #A2601  
ISO #9002

Model No.

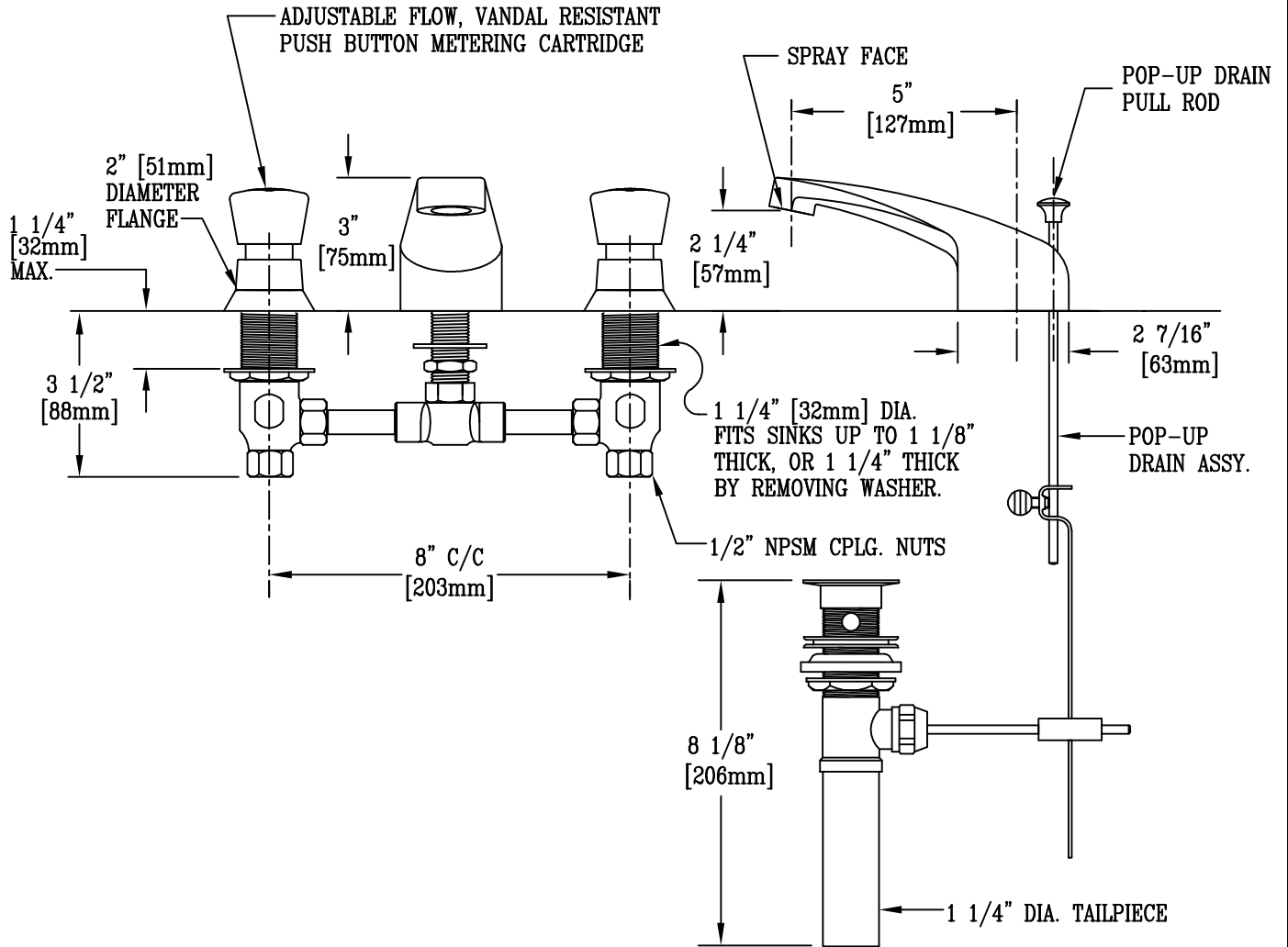
B-2991-PSF

Item No.:

Job Name:

Architect/Engineer Approval:

Notes:



NOTE: ROUGH-IN REQUIRED:  
 ø7/8 FOR CENTER SHANK  
 ø1 1/4 FOR HOT/COLD SIDE BODIES

FURNISHED w/  
 SPANNER BIT



Product Description:  
 SLOW SELF-CLOSING COMMERCIAL FAUCET WITH  
 PUSH-BUTTON METERING CARTRIDGES, CAST SPOUT WITH  
 SPRAY FACE, 8" INLET CENTERS, & POP-UP DRAIN

Drawn:

DHL

Checked

WJS

Scale:

1 : 4

Approved

JHB

Date:

12/7/05