



# T&S BRASS AND BRONZE WORKS, INC.

2 Saddleback Cove / P.O. Box 1088  
Travelers Rest, SC 29690



REG. #A2601  
ISO #9001

Model No.  
**BL-4250-02**

Item No.

Travelers Rest, SC: 800-476-4103 Simi Valley, CA: 800-423-0150 Fax: 864-834-3518 www.tsbrass.com

This Space for Architect/Engineer Approval

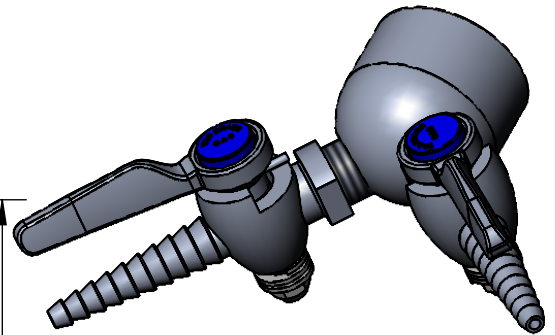
Job Name \_\_\_\_\_ Date \_\_\_\_\_

Model Specified \_\_\_\_\_ Quantity \_\_\_\_\_

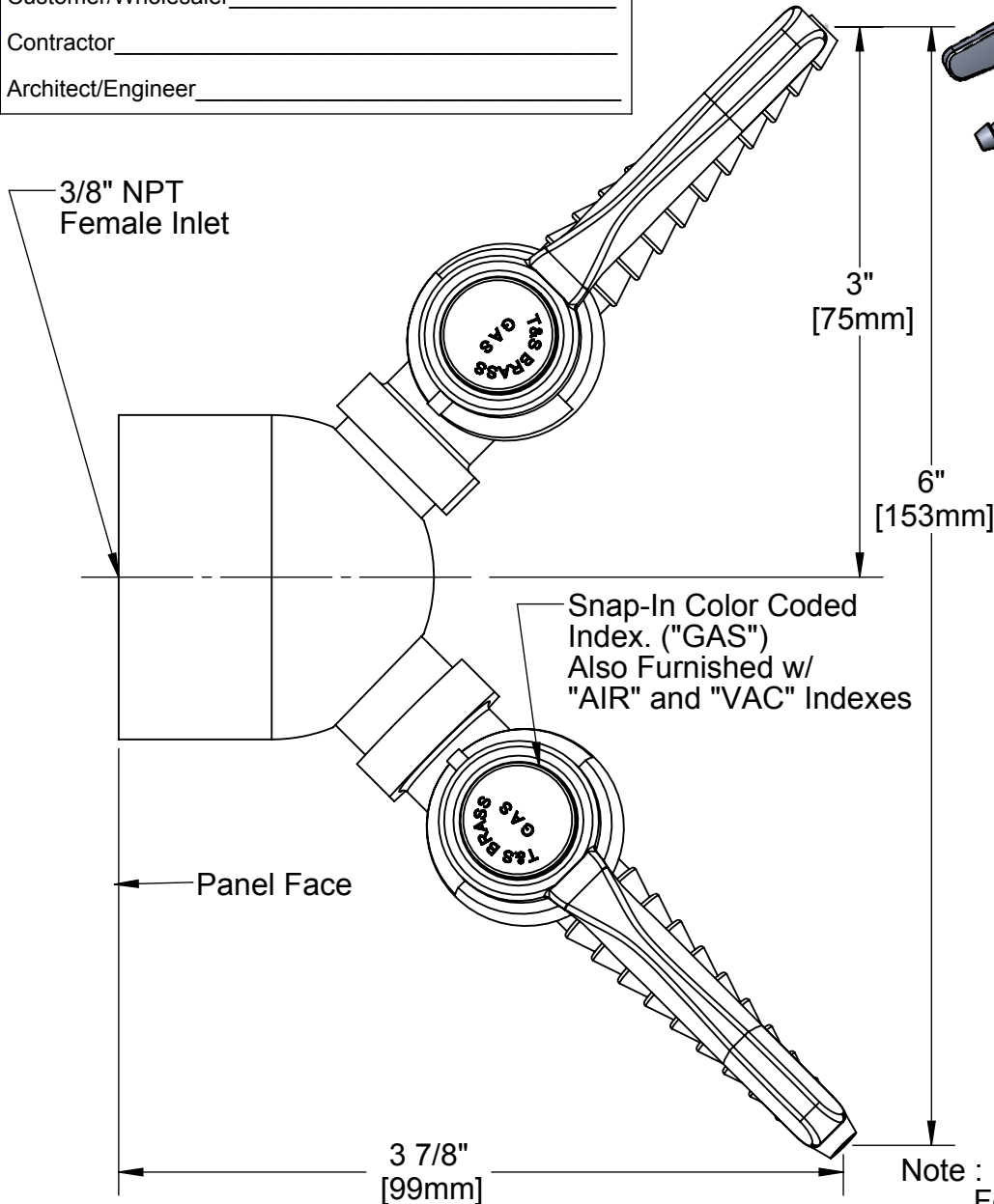
Customer/Wholesaler \_\_\_\_\_

Contractor \_\_\_\_\_

Architect/Engineer \_\_\_\_\_



Scale 1:2



Note :  
For Pressures Above 0.5 PSIG  
or Oxygen and Specialty Gases,  
Use BL-4010-01 Gas Cock

Product Specifications:  
Panel Flange w/ 2 Hose  
Cocks, 3/8" NPT Inlet

Drawn ARH	Checked JRM	Approved JHB
Scale: 1:1		Date: 9/19/07



# T&S BRASS AND BRONZE WORKS, INC.

2 Saddleback Cove / P.O. Box 1088  
Travelers Rest, SC 29690



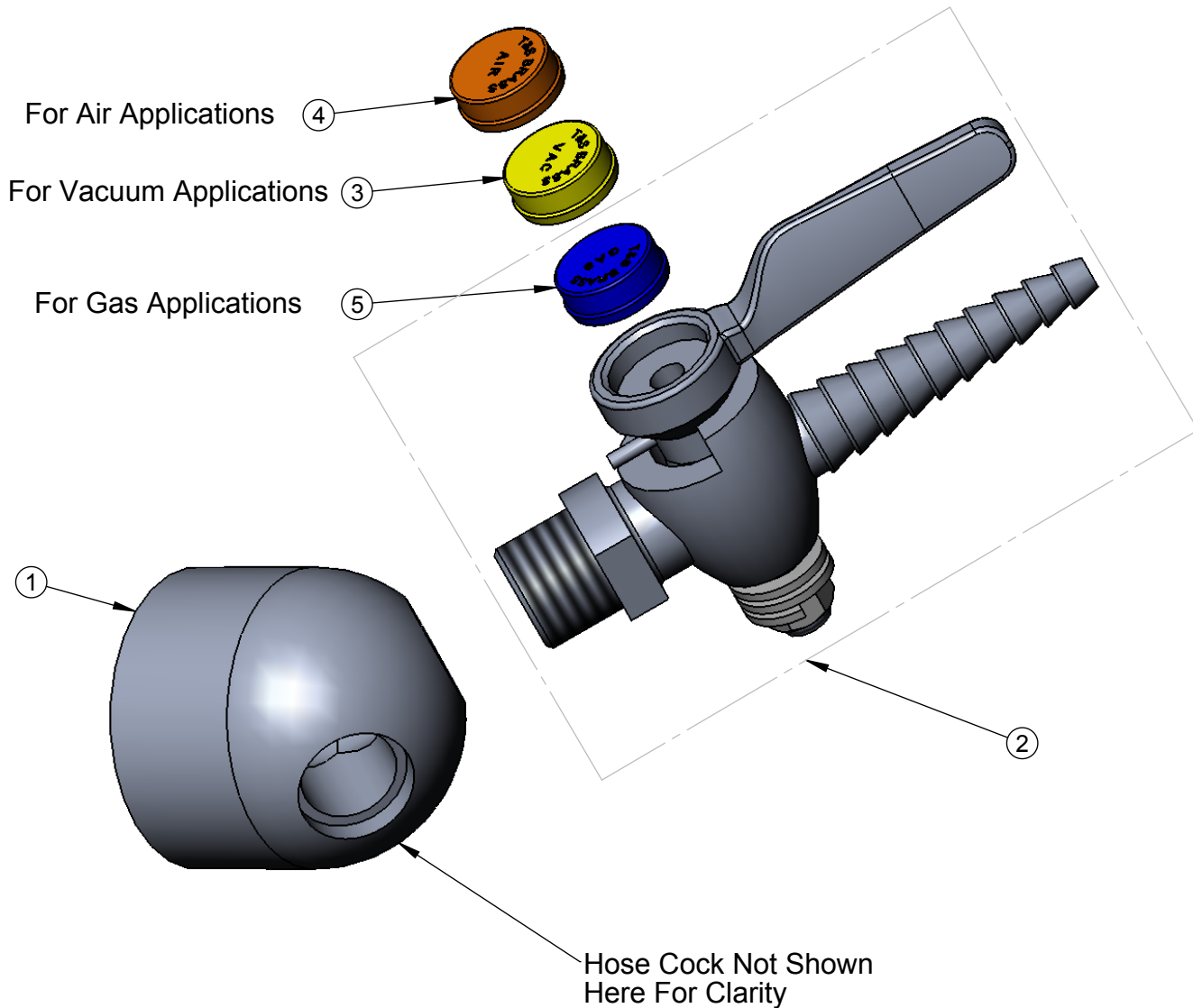
REG. #A2601  
ISO #9001

Model No.  
**BL-4250-02**

Item No.

Travelers Rest, SC: 800-476-4103 Simi Valley, CA: 800-423-0150 Fax: 864-834-3518 www.tsbrass.com

ITEM NO.	SALES NO.	DESCRIPTION
1	000080-40	Panel Flange, 3/8" NPT
2	BL-4000-01	Cock Assembly, Ground Key
3	001200-45	Cap, Index, Yellow, Vacuum
4	001203-45	Cap, Index, Orange, Air
5	001197-45	Cap, Index, Blue, Gas



Product Specifications:

Panel Flange w/ 2 Hose  
Cocks, 3/8" NPT Inlet

Drawn ARH	Checked JRM	Approved JHB
Scale: 1:1		Date: 9/19/07