



T&S BRASS AND BRONZE WORKS, INC.

2 SADDLEBACK COVE / P.O. BOX 1088 / TRAVELERS REST, SC 29690

PHONE 800-476-4103

FAX 864- 834-3518



REG.#A2601
ISO #9002

Model No.

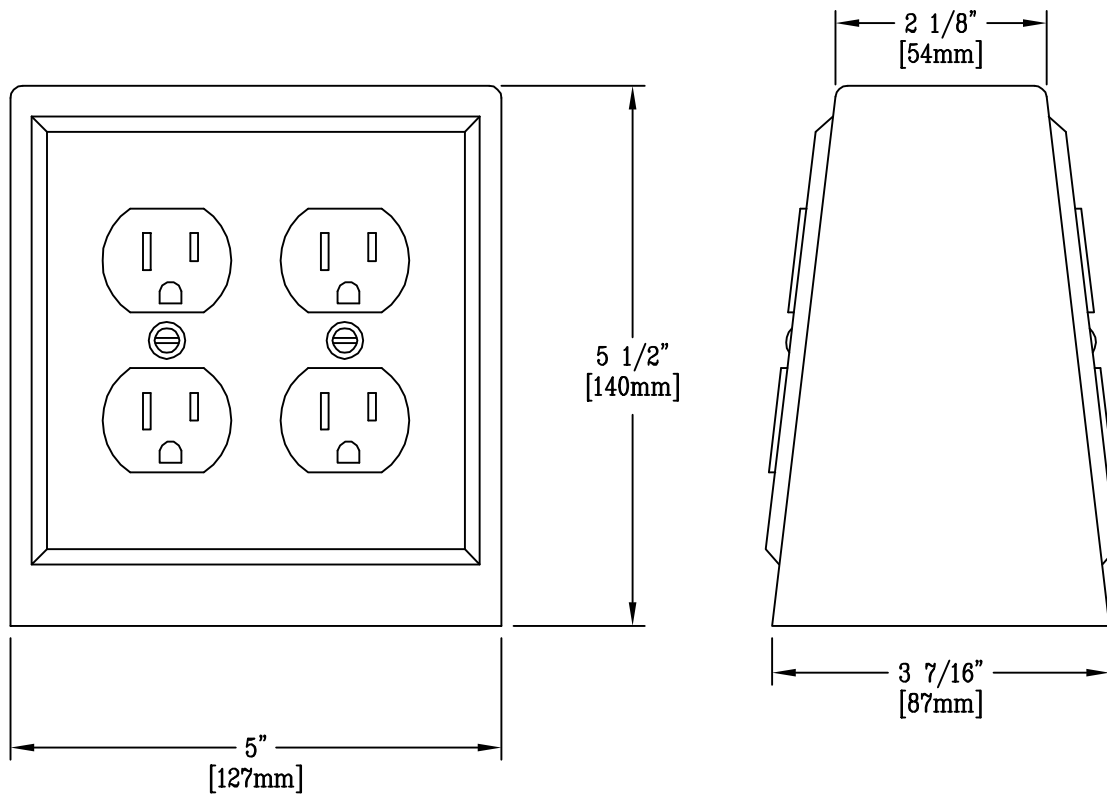
BL-8065-DD

Item No.:

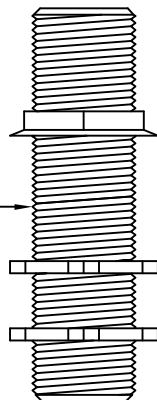
Job Name:

Architect/Engineer Approval:

Notes:



3/4" N.P.S.M
X 4" NIPPLE
w/ WASHER
AND LOCKNUTS



NOTES:

1. POLISHED ALUMINUM ELECTRICAL BOX SUPPLIED WITH DUPLEX, 3 WIRE RECEPTACLES, COVERPLATE AND SUPPLY NIPPLE WITH LOCKNUTS AND WASHER.
2. CONSTRUCTED OF U.L. APPROVED COMPONENTS.

Product Description:

DOUBLE GANG, DOUBLE FACE
ELECTRICAL BOX

Drawn:

TEH

Checked

JKD

Scale:

6" = 1'

Approved

MVW

Date:

10-25-00