



# T&S BRASS AND BRONZE WORKS, INC.

2 Saddleback Cove / P.O. Box 1088  
Travelers Rest, SC 29690



REG. #A2601  
ISO #9001

Model No.  
**B-0318**

Item No.

Travelers Rest, SC: 800-476-4103 Simi Valley, CA: 800-423-0150 Fax: 864-834-3518 www.tsbrass.com

This Space for Architect/Engineer Approval

Job Name \_\_\_\_\_ Date \_\_\_\_\_

Model Specified \_\_\_\_\_ Quantity \_\_\_\_\_

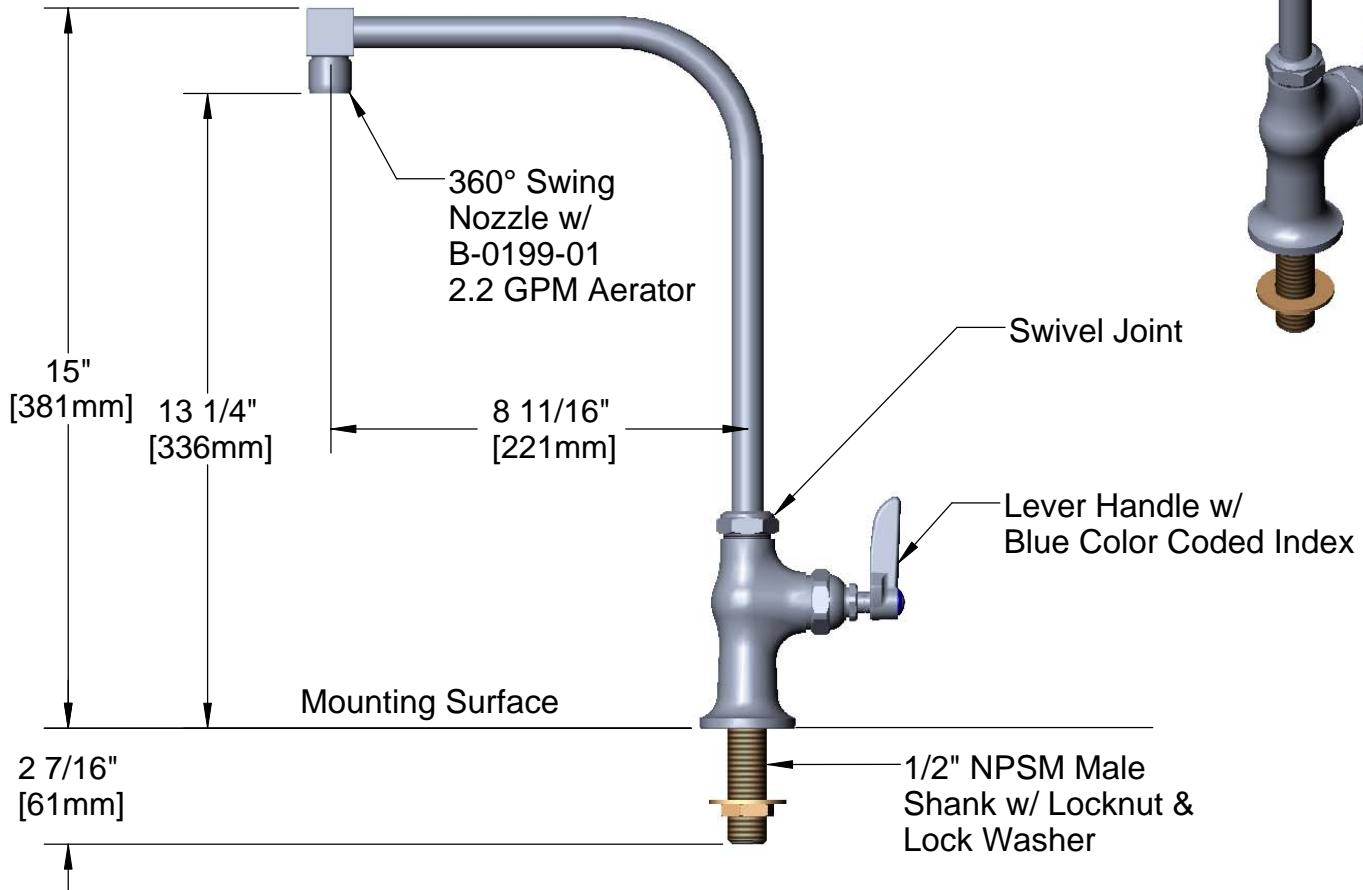
Customer/Wholesaler \_\_\_\_\_

Contractor \_\_\_\_\_

Architect/Engineer \_\_\_\_\_



**ADA Compliant**



**150A Tailpiece & Nut  
Furnished for 1/4" NPT  
Connection**

Product Specifications:

Pot Filler Base & Swing Nozzle w/ 2.2 GPM  
Aerator & Blue Color Coded Index

Drawn <b>DHL</b>	Checked <b>JRM</b>	Approved <b>JHB</b>
Scale: <b>1:4</b>		Date: <b>01/29/08</b>



# T&S BRASS AND BRONZE WORKS, INC.

2 Saddleback Cove / P.O. Box 1088  
Travelers Rest, SC 29690



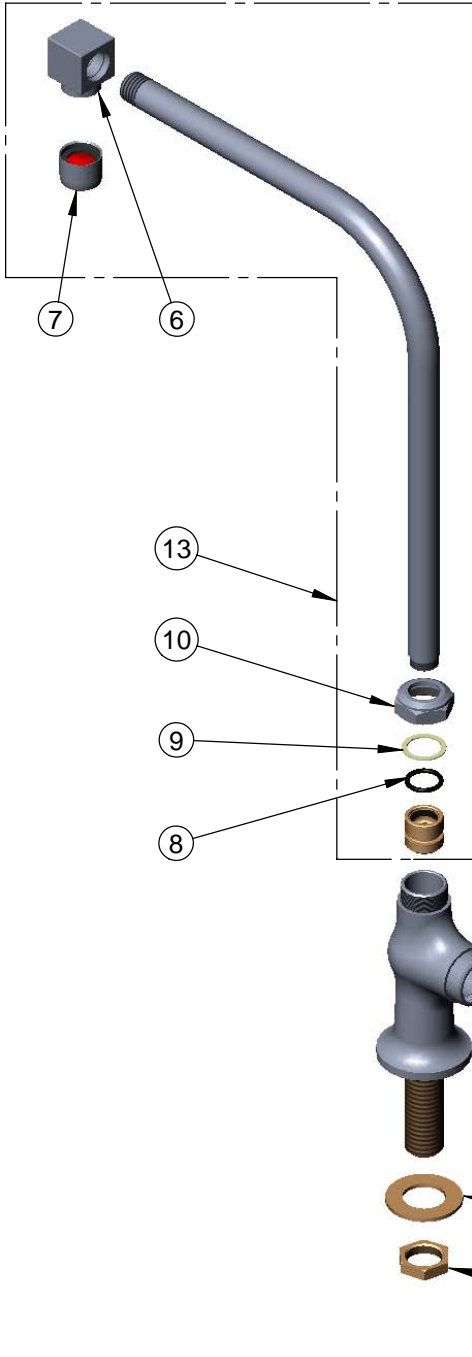
REG. #A2601  
ISO #9001

Model No.  
**B-0318**

Item No.

Travelers Rest, SC: 800-476-4103 Simi Valley, CA: 800-423-0150 Fax: 864-834-3518 www.tsbrass.com

ITEM NO.	SALES NO.	DESCRIPTION
1	002954-45	Shank Lock Nut
2	000999-45	Brass Lock Washer
3	001638-45	Lever Handle
4	000922-45	Lever Handle Screw
5	001660-45	Blue Index-CW
6	002823-40	Cube
7	B-0199-01	2.2 GPM Aerator, Female
8	001074-45	O-Ring
9	001023-45	Swivel Sleeve
10	001524-40	Swivel Nut
11	005960-40	Spindle Asm, Eterna "Hot"
12	150A	Bag of (1) Nut & (1) Tailpiece
13	016351-40	B-0318 Swing Nozzle Assembly



Product Specifications:

Pot Filler Base & Swing Nozzle w/ 2.2 GPM  
Aerator & Blue Color Coded Index

Drawn <b>DHL</b>	Checked <b>JRM</b>	Approved <b>JHB</b>
Scale: <b>1:4</b>		Date: <b>01/29/08</b>