



T&S BRASS AND BRONZE WORKS, INC.

2 Saddleback Cove / P.O. Box 1088
Travelers Rest, SC 29690



REG. #A2601
ISO #9001

Model No.

B-0467

Item No.

Travelers Rest, SC: 800-476-4103 Simi Valley, CA: 800-423-0150 Fax: 864-834-3518 www.tsbrass.com

This Space for Architect/Engineer Approval

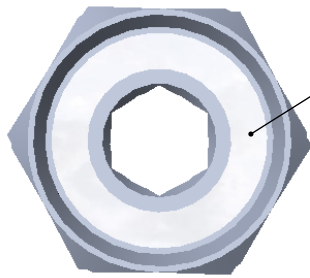
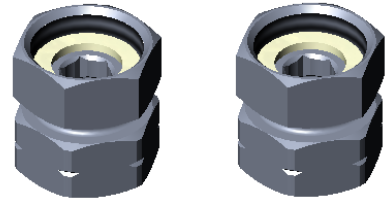
Job Name _____ Date _____

Model Specified _____ Quantity _____

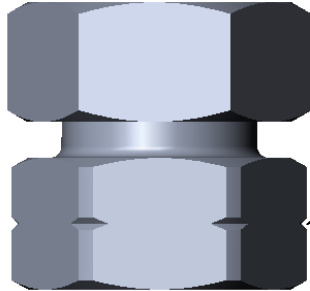
Customer/Wholesaler _____

Contractor _____

Architect/Engineer _____

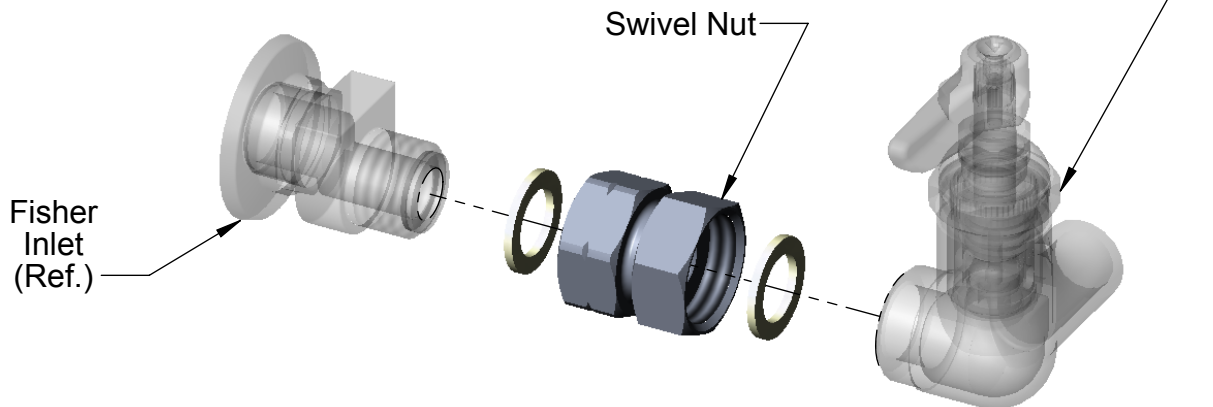


Supplied with (2)
Santoprene Seals per Assembly
(1 each end)



1 3/8" [35mm] Swivel Hex Nut with Internal Threads
to fit T&S Faucet Body

1 3/8" [35mm] Hex on Body.
Internal Threads fit Fisher
Inlet Flanges



Product Specifications:

**B-0467 Wall Mount Faucet Adapter
for T&S Faucet to Fisher Inlets
(Supplied in Qty (2) per package)**

Drawn
GEF

Checked
JRM

Approved
JHB

Scale:

1:1

Date:

6/26/07



T&S BRASS AND BRONZE WORKS, INC.

2 Saddleback Cove / P.O. Box 1088
Travelers Rest, SC 29690



REG. #A2601
ISO #9001

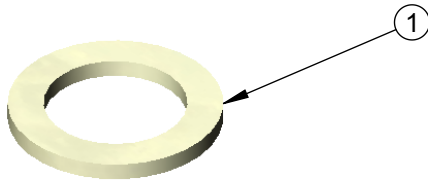
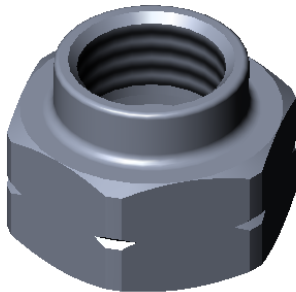
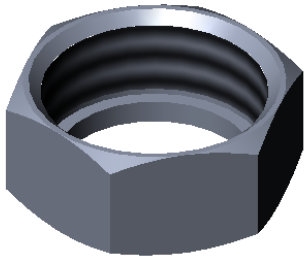
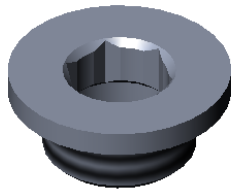
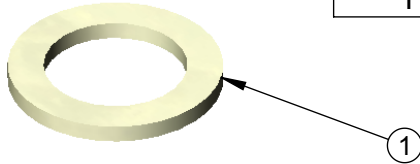
Model No.

B-0467

Item No.

Travelers Rest, SC: 800-476-4103 Simi Valley, CA: 800-423-0150 Fax: 864-834-3518 www.tsbrass.com

ITEM NO.	SALES NO.	DESCRIPTION
1	001019-45	Washer, Coupling Nut



Product Specifications:

**B-0467 Wall Mount Faucet Adapter
for T&S Faucet to Fisher Inlets
(Supplied in Qty (2) per package)**

Drawn GEF	Checked JRM	Approved JHB
Scale: 1:1		Date: 6/26/07