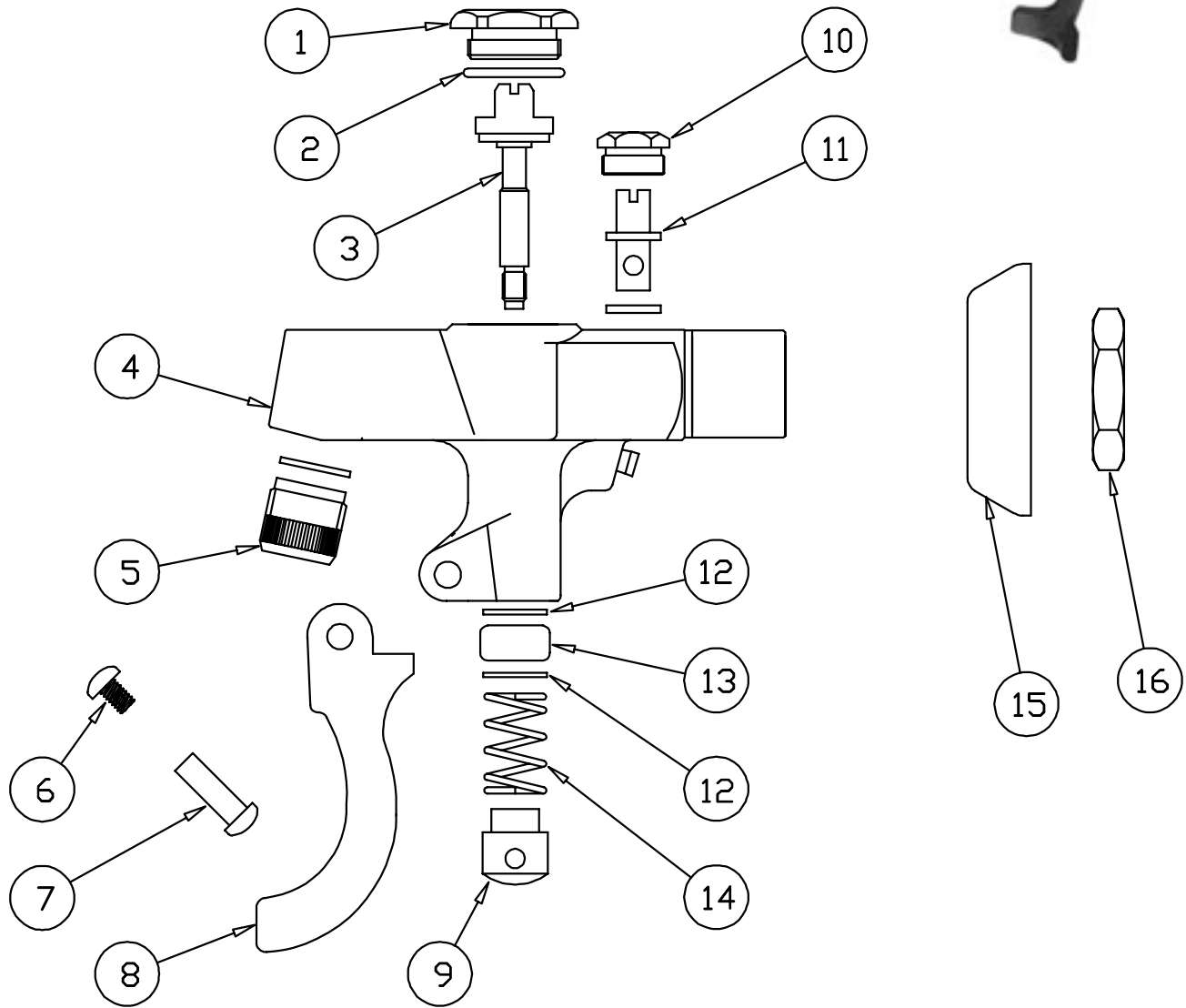


B-1200



Glass Filler Assembly

1	Hexcap	000623-40	9	Pushbutton	000752-25
2	O-Ring	001062-45	10	Nut, Volume Control	000714-25
3	Stem	000826-20	11	Stem, Volume Control	000834-25
4	Asm, Body, Glass Filler & Pin	002331-40	12	Washer, Bonnet	000974-45
5	Tip, Glass Filler	003090-45	13	Packing Stem	001100-45
6	Screw, Handle	003199-45	14	Spring	000894-45
7	Nut, Handle	003198-45	15	Flange	000023-40
8	Handle, Lever Arm - Blue Lexan	001145-45	16	Locknut	000713-20

