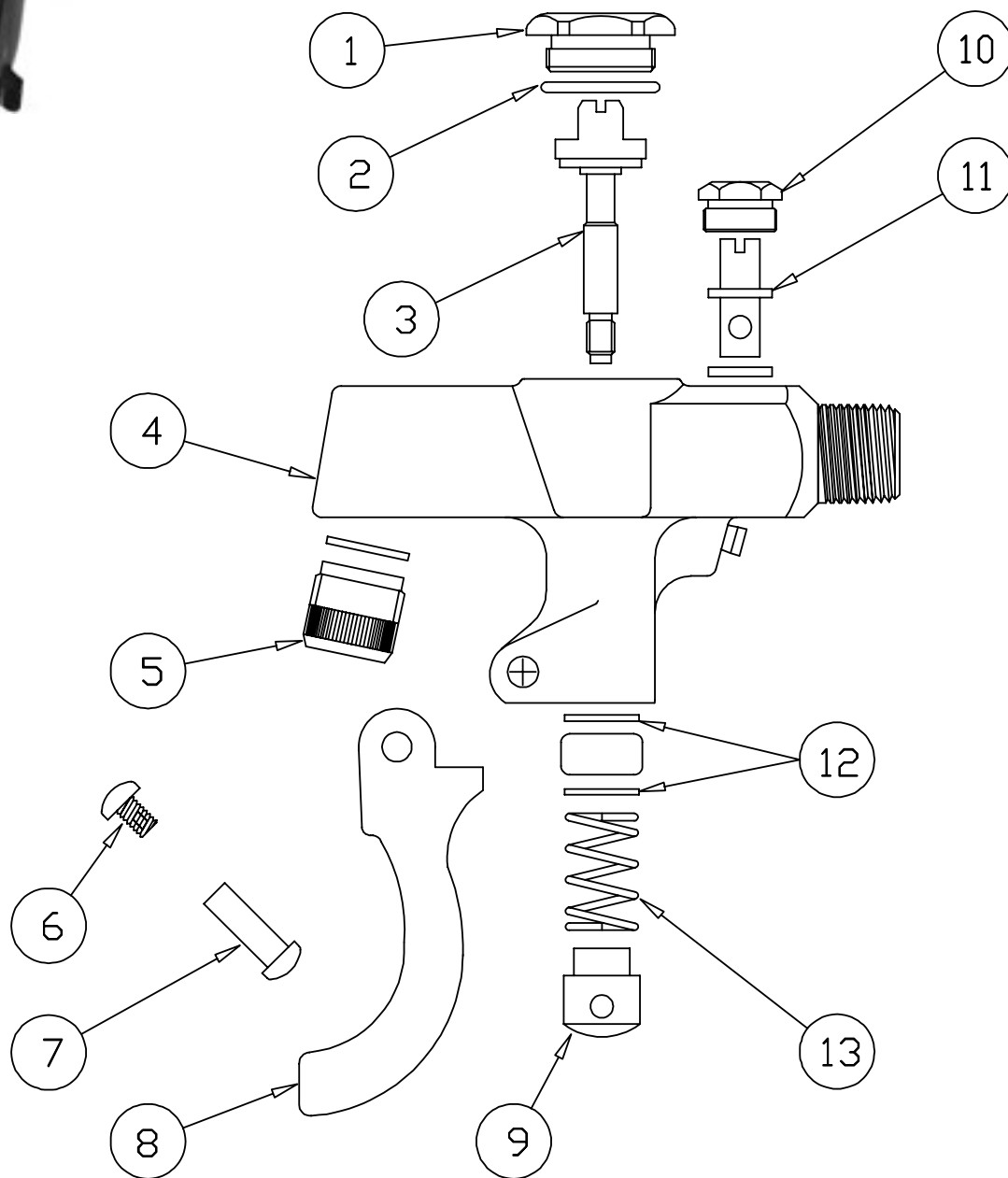




# B-1205



## Glass Filler Assembly

1	Hexcap	000623-40	8	Lever Arm, Blue Lexan	001145-45
2	O-Ring	001062-45	9	Pushbutton	000752-25
3	Stem	000826-20	10	Nut, Volume Control	000714-25
4	Asm, Body, Glass Filler & Pin	002334-40	11	Stem, Volume Control	000834-25
5	Tip, Glass Filler	003090-45	12	Washer, Bonnet	000974-45
6	Screw, Handle	003199-45	13	Spring	000894-45
7	Nut, Handle	003198-45			

