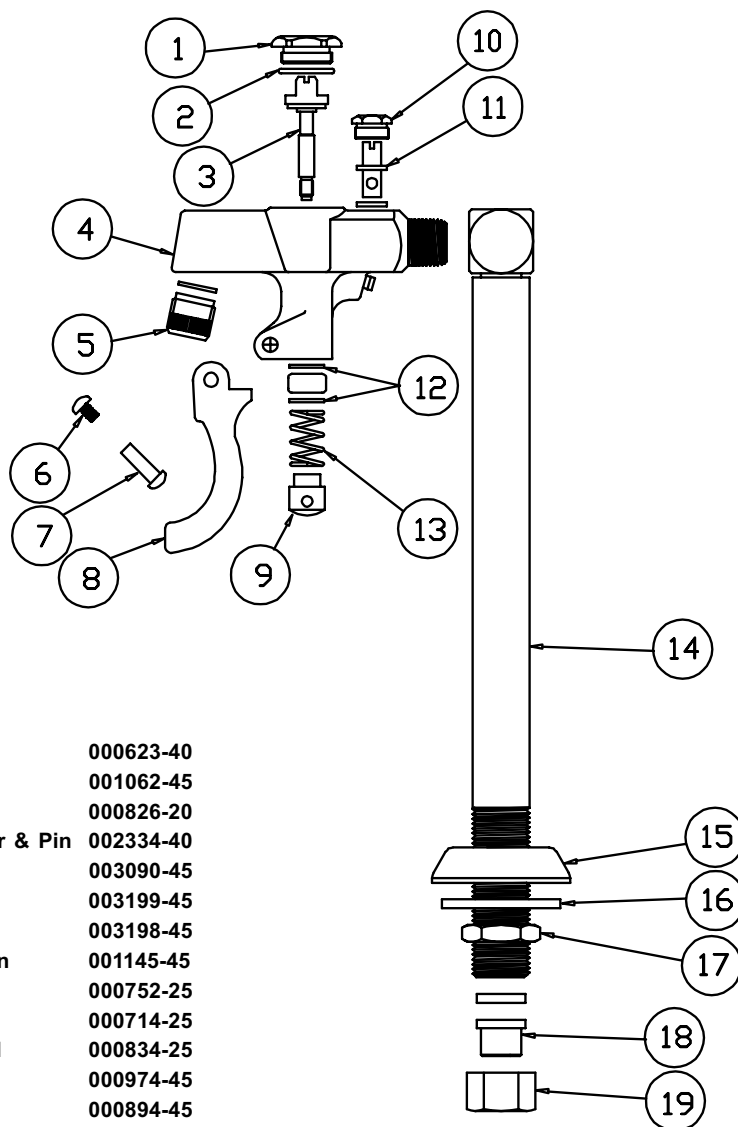


B-1230



Glass Filler Assembly

1	Hexcap	000623-40
2	O-Ring	001062-45
3	Stem	000826-20
4	Asm, Body, Glass Filler & Pin	002334-40
5	Tip, Glass Filler	003090-45
6	Screw, Handle	003199-45
7	Nut, Handle	003198-45
8	Lever Arm, Blue Lexan	001145-45
9	Pushbutton	000752-25
10	Nut, Volume Control	000714-25
11	Stem, Volume Control	000834-25
12	Washer, Bonnet	000974-45
13	Spring	000894-45
14	Pedestal, 8"	000425-40
15	Flange	000024-40
16	Washer	001033-45
17	Locknut	002954-45
18	Tailpiece	000856-20
19	Nut, Coupling	000961-45

