



T&S BRASS AND BRONZE WORKS, INC.

2 Saddleback Cove / P.O. Box 1088
Travelers Rest, SC 29690



REG. #A2601
ISO #9001

Model No.

B-2347-12

Item No.

Travelers Rest, SC: 800-476-4103 Simi Valley, CA: 800-423-0150 Fax: 864-834-3518 www.tsbrass.com

This Space for Architect/Engineer Approval

Job Name _____ Date _____

Model Specified _____ Quantity _____

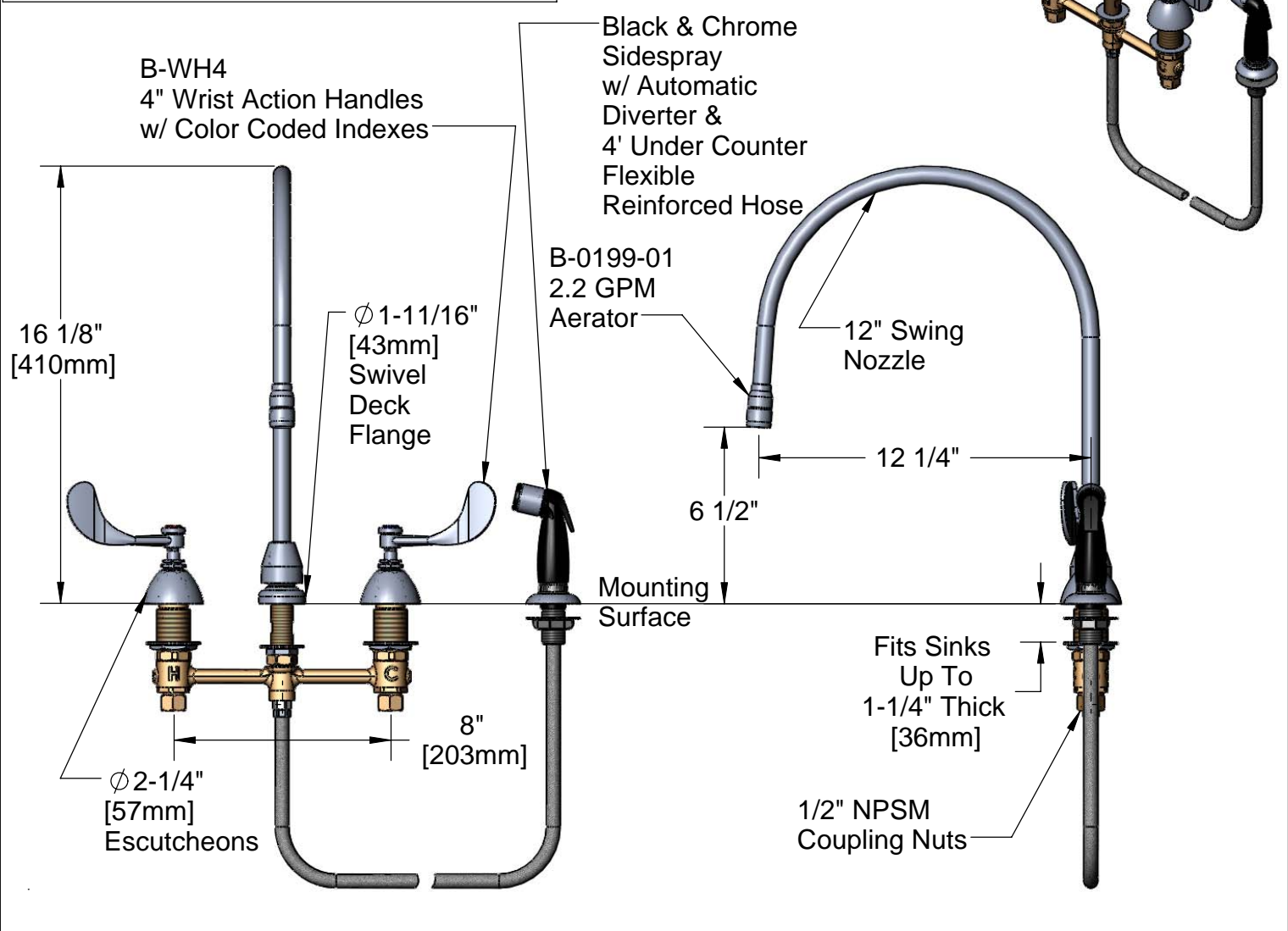
Customer/Wholesaler _____

Contractor _____

Architect/Engineer _____



ADA Compliant



Note: Rough-In Required:
 Ø 1" [25mm] for Center Shank
 Ø 1-1/2" [38mm] for Hot/Cold Side [1-1/4" [32mm] Minimum]

Product Specifications:
EasyInstall Faucet w/ 4' Sidespray, 4" Wrist Action Handles, Compression Cartridges, 8" Inlet Centers & 12" Swing Nozzle w/ 2.2 GPM Aerator

Drawn JRM	Checked GEF	Approved JHB
Scale: NTS		Date: 7/31/08



T&S BRASS AND BRONZE WORKS, INC.

2 Saddleback Cove / P.O. Box 1088
Travelers Rest, SC 29690



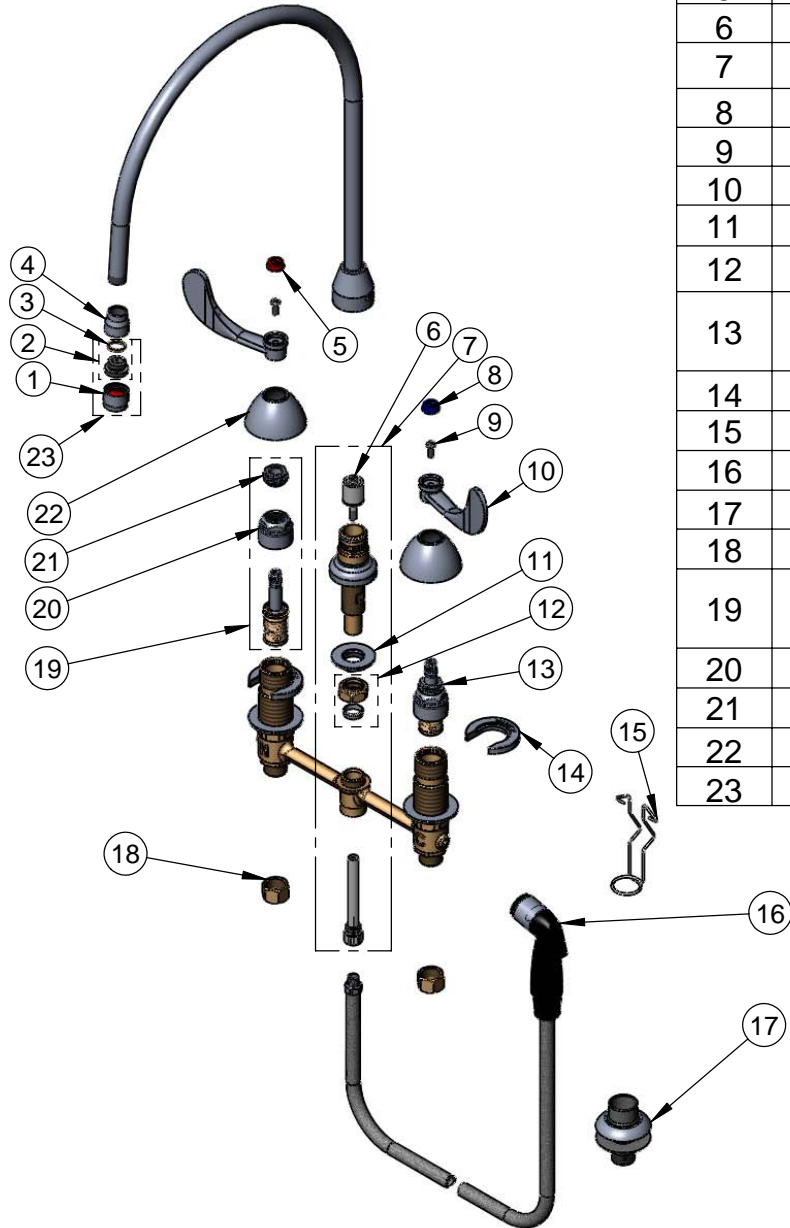
REG. #A2601
ISO #9001

Model No.

B-2347-12

Item No.

Travelers Rest, SC: 800-476-4103 Simi Valley, CA: 800-423-0150 Fax: 864-834-3518 www.tsbrass.com



ITEM NO.	SALES NO.	DESCRIPTION
1	B-0199-01	2.2 GPM Aerator 55/64-27 Female
2	044A	Adapter, 3/8" NPSM x Aerator Male
3	009636-45	Washer
4	000557-25	Bell Adapter
5	001194-45	Red HW Index
6	002338-45	Diverter
7	017208-40	Center Body Diverter Asy
8	001686-45	Blue CW Index
9	000925-45	Lab Handle Screw
10	B-WH4	4" Wrist Action Handle
11	016742-45	Center Flange Nut
12	016745-45	Compression Nut & Fitting
13	016752-40	CWS Bonnet & LTC Eterna Cartridge
14	016749-45	C-Washer
15	016777-45	CWS Hanger
16	001495-45	Side Spray
17	001496-45	Hose Guide
18	000958-20	Coupling Nut
19	016753-40	CWS Bonnet & RTC Eterna Cartridge
20	016743-25	CWS Bonnet Assembly
21	009002-25	Packing Assembly
22	001257-40	Bell Escutcheon
23	B-0199-02	2.2 GPM Aerator, 3/8" NPSM Male



017245-40

Installation Repair Kit
Includes #11, (2)#14, & #15

Product Specifications:

EasyInstall Faucet w/ 4" Sidespray, 4" Wrist Action Handles, Compression Cartridges, 8" Inlet Centers & 12" Swing Nozzle w/ 2.2 GPM Aerator

Drawn JRM	Checked GEF	Approved JHB
Scale: NTS		Date: 7/31/08