



T&S BRASS AND BRONZE WORKS, INC.

2 Saddleback Cove / P.O. Box 1088
Travelers Rest, SC 29690



REG. #A2601
ISO #9001

Model No.

B-2365

Item No.

Travelers Rest, SC: 800-476-4103 Simi Valley, CA: 800-423-0150 Fax: 864-834-3518 www.tsbrass.com

This Space for Architect/Engineer Approval

Job Name _____ Date _____

Model Specified _____ Quantity _____

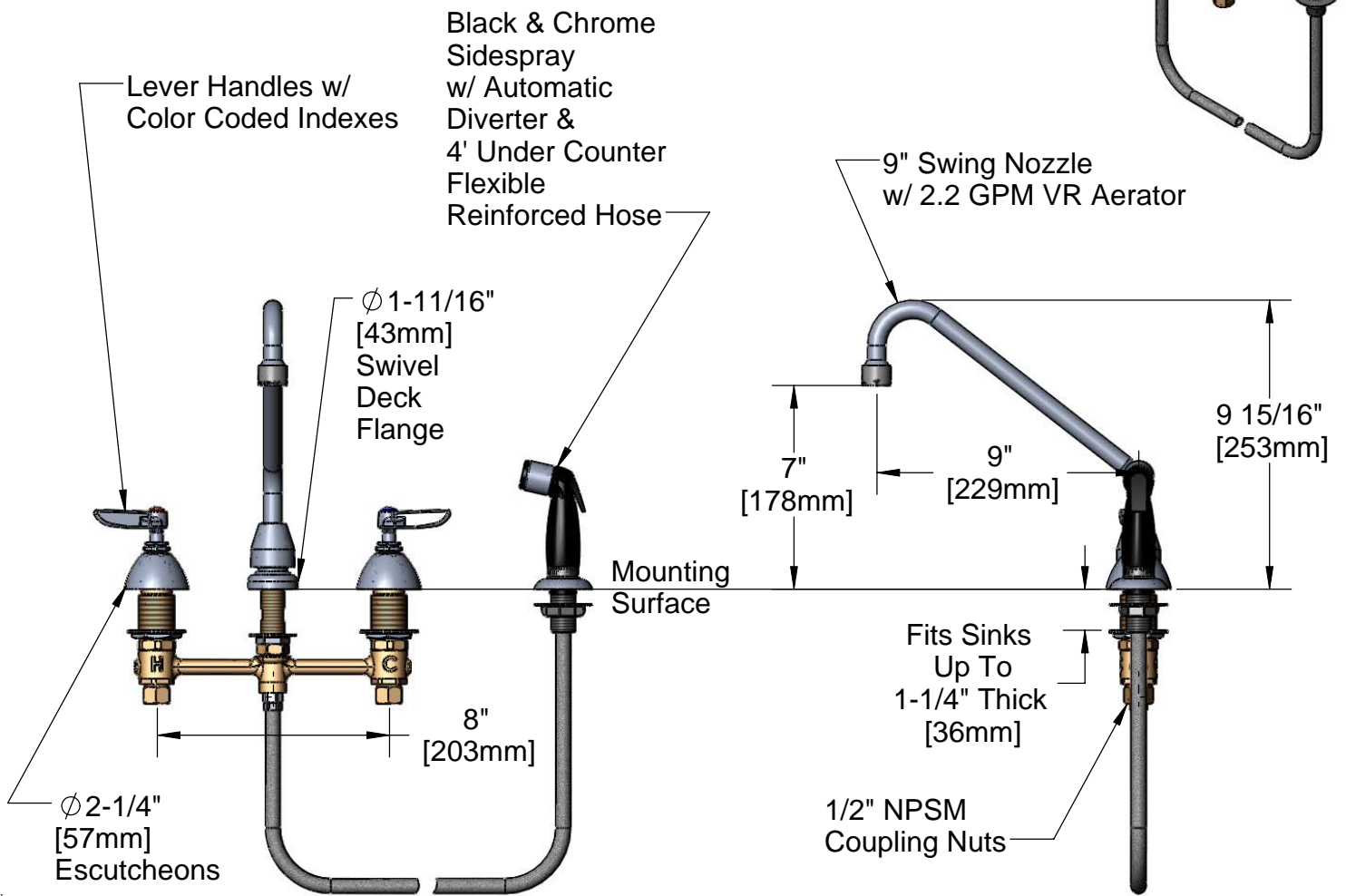
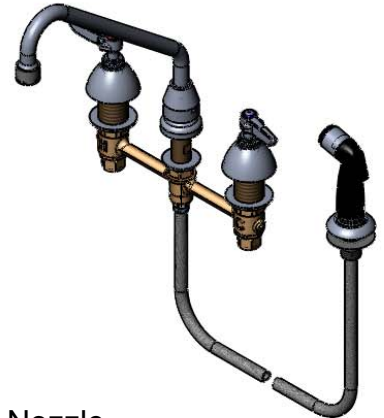
Customer/Wholesaler _____

Contractor _____

Architect/Engineer _____



ADA Compliant



Note: Rough-In Required:

ϕ 1" [25mm] for Center Shank

ϕ 1-1/2" [38mm] for Hot/Cold Side [1-1/4" [32mm] Minimum]

Product Specifications:

EasyInstall Faucet w/ 4' Sidespray, Lever Handles, Compression Cartridges, 8" Inlet Centers & 9" Swing Nozzle w/ 2.2 GPM VR Aerator

Drawn JRM	Checked GEF	Approved JHB
Scale: NTS		Date: 9/11/08



T&S BRASS AND BRONZE WORKS, INC.

2 Saddleback Cove / P.O. Box 1088
Travelers Rest, SC 29690



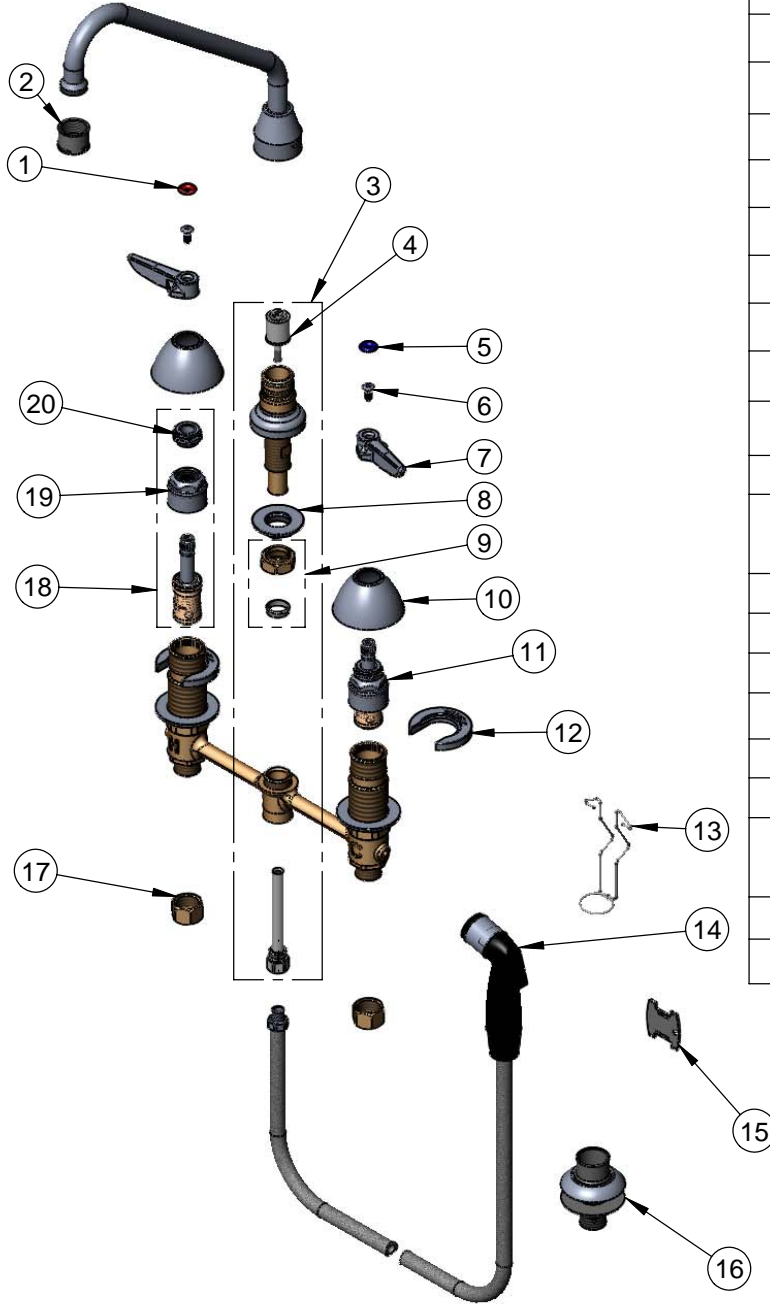
REG. #A2601
ISO #9001

Model No.

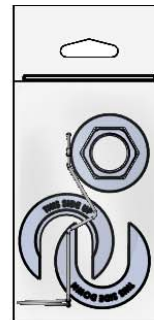
B-2365

Item No.

Travelers Rest, SC: 800-476-4103 Simi Valley, CA: 800-423-0150 Fax: 864-834-3518 www.tsbrass.com



ITEM NO.	SALES NO.	DESCRIPTION
1	001661-45	Red Index-HW
2	B-0199-06	2.2GPM VR Aerator
3	017208-40	Center Body Diverter Asy
4	002338-45	Diverter
5	001660-45	Blue Index-CW
6	000922-45	Lever Handle Screw
7	001638-45	Lever Handle
8	016742-45	Center Flange Nut
9	016745-45	Compression Nut & Fitting
10	001257-40	Bell Escutcheon
11	016752-40	EasyInstall CWS LTC Eterna (Teflon)
12	016749-45	C-Washer
13	016777-45	CWS Hanger
14	001495-45	Side Spray
15	Q015425-45	Vandal Resistant Key
16	001496-45	Hose Guide
17	000958-20	Coupling Nut
18	016753-40	EasyInstall CWS RTC Eterna (Teflon)
19	016743-25	CWS Bonnet Assembly
20	009002-25	Packing Assembly



017245-40

Installation Repair Kit
Includes #8, (2)#12, & #13

Product Specifications:

EasyInstall Faucet w/ 4' Sidespray, Lever Handles, Compression Cartridges, 8" Inlet Centers & 9" Swing Nozzle w/ 2.2 GPM VR Aerator

Drawn JRM	Checked GEF	Approved JHB
Scale: NTS		Date: 9/11/08