



T&S BRASS AND BRONZE WORKS, INC.

2 Saddleback Cove / P.O. Box 1088
Travelers Rest, SC 29690



REG. #A2601
ISO #9001

Model No.
B-2820-PA

Item No.

Travelers Rest, SC: 800-476-4103 Simi Valley, CA: 800-423-0150 Fax: 864-834-3518 www.tsbrass.com

This Space for Architect/Engineer Approval

Job Name _____ Date _____

Model Specified _____ Quantity _____

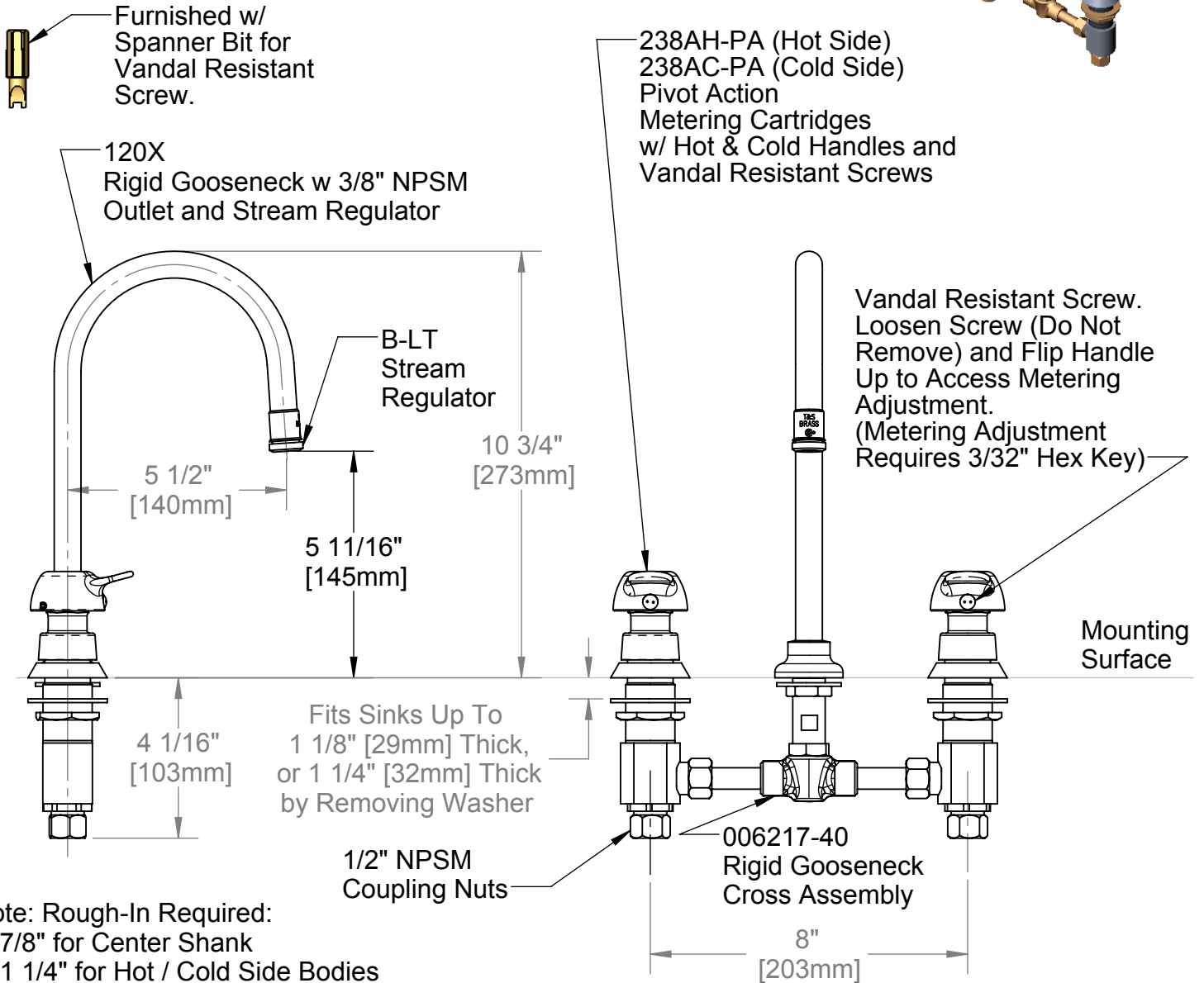
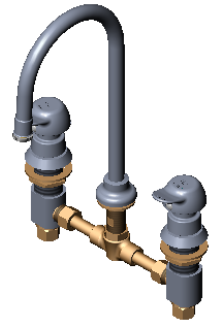
Customer/Wholesaler _____

Contractor _____

Architect/Engineer _____



ADA Compliant



Product Specifications:

8" C/C Deck Mounted Commercial Mixing Faucet with 120X Rigid Gooseneck w/ Stream Regulator and Pivot Action Metering Cartridges

Drawn GEF	Checked ARH	Approved JHB
Scale: 1:4	Date: 01/23/08	



T&S BRASS AND BRONZE WORKS, INC.

2 Saddleback Cove / P.O. Box 1088
Travelers Rest, SC 29690



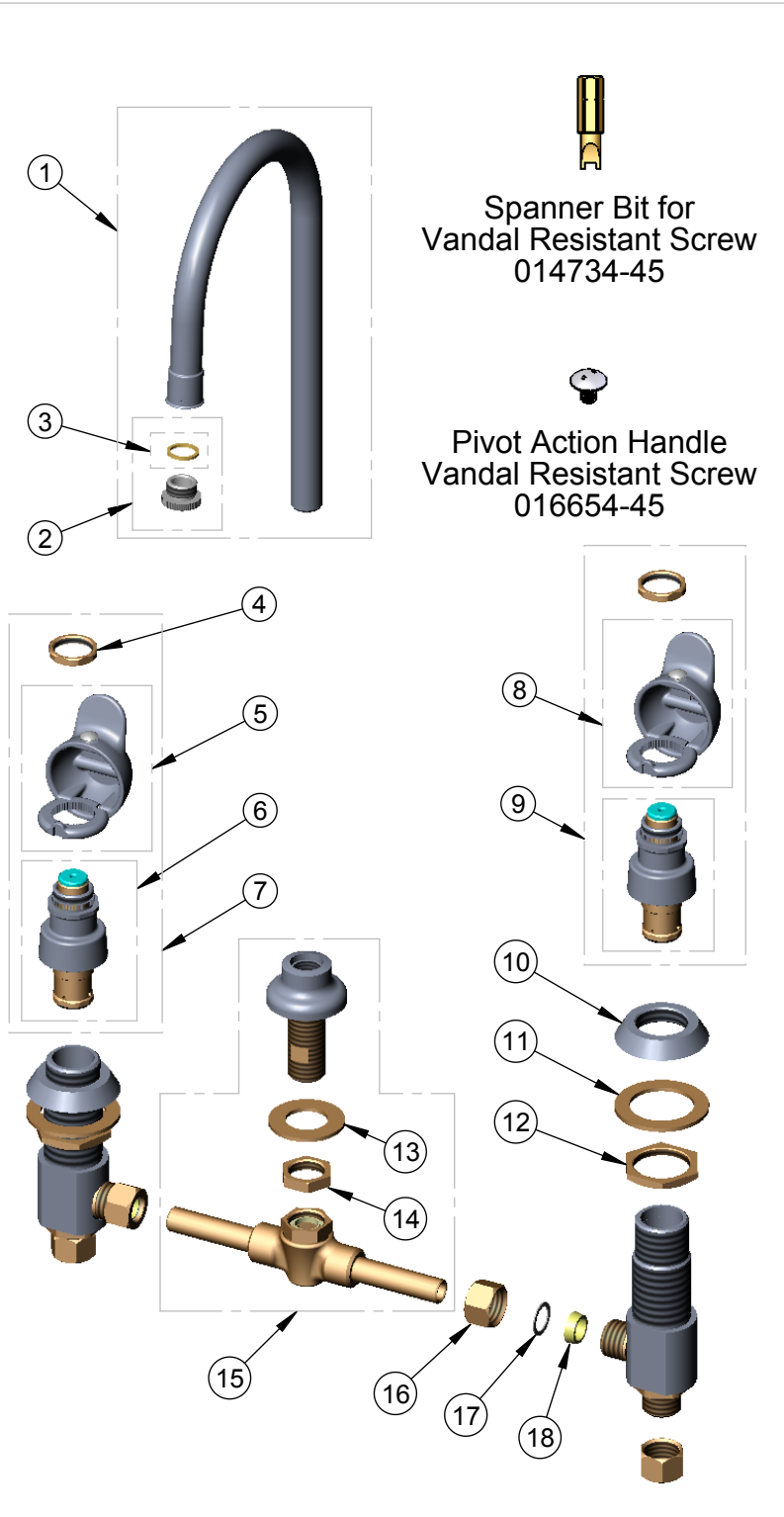
REG. #A2601
ISO #9001

Model No.

B-2820-PA

Item No.

Travelers Rest, SC: 800-476-4103 Simi Valley, CA: 800-423-0150 Fax: 864-834-3518 www.tsbrass.com



Spanner Bit for
Vandal Resistant Screw
014734-45

Pivot Action Handle
Vandal Resistant Screw
016654-45

ITEM NO.	SALES NO.	DESCRIPTION
1	120X	Rigid GN w/ B-LT
2	B-LT	Stream Regulator Assembly
3	001043-45	Washer
4	PA-N	Retaining Nut
5	PA-H	Hot Pivot Action Handle Assembly w/ Retaining Nut and Spanner Bit
6	238A-PA	Pivot Action Metering Cartridge w/ Retaining nut
7	238AH-PA	Pivot Action Metering Cartridge w/ Hot Pivot Action Handle, Retaining Nut and Spanner Bit
8	PA-C	Cold Pivot Action Handle Assembly w/ Retaining Nut and Spanner Bit
9	238AC-PA	Pivot Action Metering Cartridge w/ Cold Pivot Action Handle, Retaining Nut and Spanner Bit
10	000537-40	Flange
11	001006-45	Washer
12	000960-20	Nut, B-0850
13	000999-45	Brass Lock Washer
14	002954-45	Shank Lock Nut
15	006217-40	Rigid GN Cross Assembly
16	000958-20	Coupling Nut
17	000981-45	Friction Washer
18	001091-45	Bevelled Washer (Ferrule)

Product Specifications:

8" C/C Deck Mounted Commercial Mixing Faucet with 120X Rigid Gooseneck w/ Stream Regulator and Pivot Action Metering Cartridges

Drawn GEF	Checked ARH	Approved JHB
Scale: 1:4		Date: 01/23/08