



T&S BRASS AND BRONZE WORKS, INC.

2 Saddleback Cove / P.O. Box 1088
Travelers Rest, SC 29690



REG. #A2601
ISO #9001

Model No.
B-2851-135X-VR

Item No.

Travelers Rest, SC: 800-476-4103 Simi Valley, CA: 800-423-0150 Fax: 864-834-3518 www.tsbrass.com

This Space for Architect/Engineer Approval

Job Name _____ Date _____

Model Specified _____ Quantity _____

Customer/Wholesaler _____

Contractor _____

Architect/Engineer _____



ADA Compliant

135X Swivel
Gooseneck

B-0199-21-VRF
2.2 GPM VR
Laminar Device

12 9/16"
[318mm]

8 3/4"
[222mm]

Ø 1-11/16"
[43mm]
Swivel
Deck
Flange

Lever Handles w/
Color Coded Indexes
& VR Screws

6 5/16"
[160mm]

Mounting
Surface

Fits Sinks
Up To
1-1/4" Thick
[36mm]

Note: Rough-In Required:
Ø 1" [25mm] for Center Shank
Ø 1-1/2" [38mm] for Hot/Cold Side [1-1/4" [32mm] Minimum]

8"
[203mm]

Ø 2-1/4"
[57mm]
Escutcheons

1/2" NPSM
Coupling Nuts

Product Specifications:

EasyInstall Faucet, Lever Handles w/ VR Screws,
Compression Cartridges, 8" Inlet Centers,
135X Gooseneck w/ 2.2 GPM VR Laminar Flow Device

Drawn
JRM

Checked
GEF

Approved
JHB

Scale:

NTS

Date:

09/11/08



T&S BRASS AND BRONZE WORKS, INC.

2 Saddleback Cove / P.O. Box 1088
Travelers Rest, SC 29690



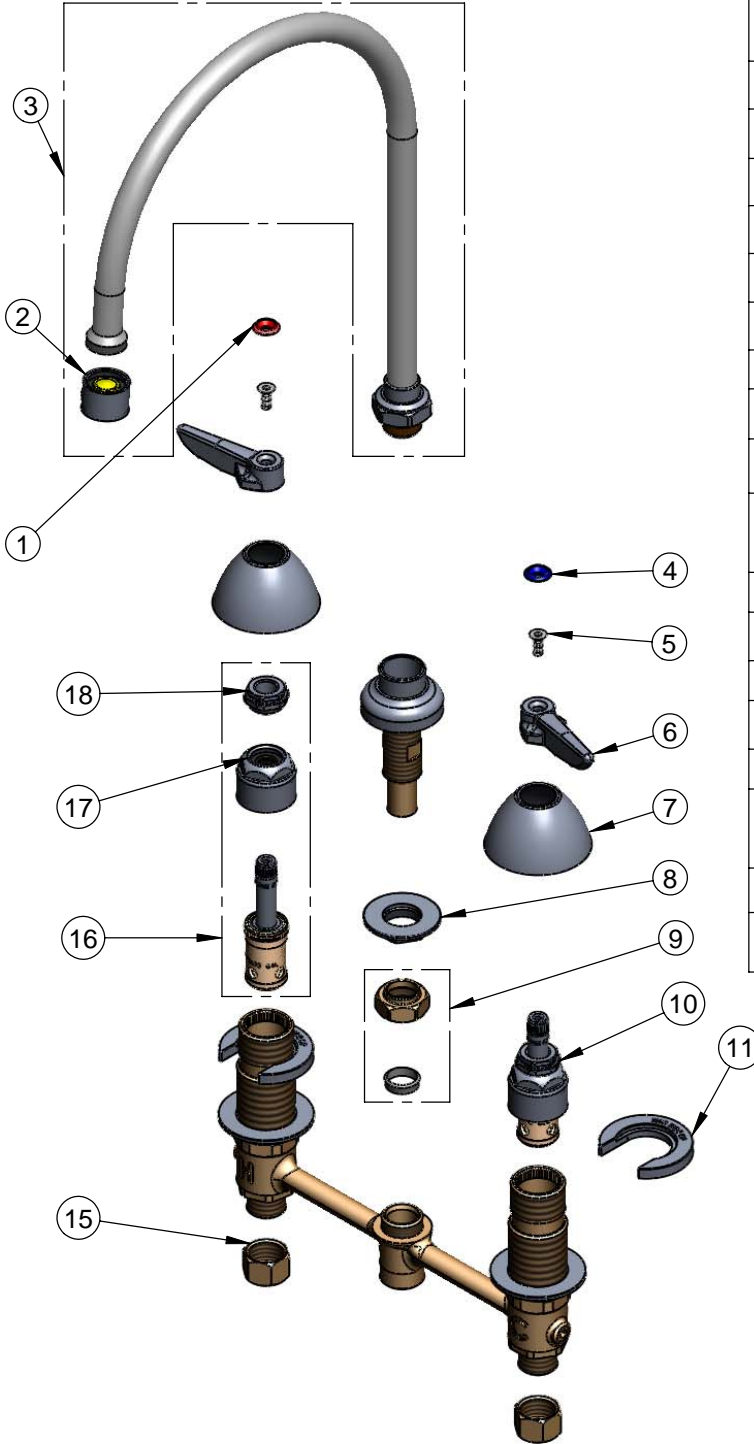
REG. #A2601
ISO #9001

Model No.

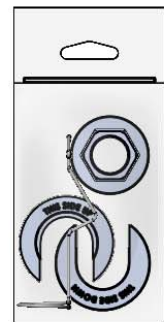
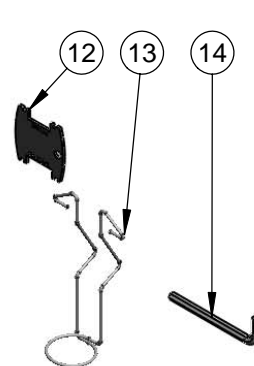
B-2851-135X-VR

Item No.

Travelers Rest, SC: 800-476-4103 Simi Valley, CA: 800-423-0150 Fax: 864-834-3518 www.tsbrass.com



ITEM NO.	SALES NO.	DESCRIPTION
1	001661-45	Red Index-HW
2	B-0199-21-VRF	VR Laminar Flow Device
3	135X-LAM-VR	135X w/ B-0199-21-VRF
4	001660-45	Blue Index-CW
5	010586-45	Pin-In-Socket Screw
6	001638-45	Lever Handle
7	001257-40	Bell Escutcheon
8	016742-45	Center Flange Nut
9	016745-45	Compression Nut & Fitting
10	016752-40	EasyInstall CWS LTC Eterna (Teflon)
11	016749-45	C-Washer
12	Q015425-45	Vandal Resistant Key
13	016777-45	CWS Hanger
14	010587-45	Pin-in-Socket Hex Key
15	000958-20	Coupling Nut
16	016753-40	EasyInstall CWS RTC Eterna (Teflon)
17	016743-25	CWS Bonnet Assembly
18	009002-25	Packing Nut Assembly



017245-40

Installation Repair Kit
Includes #8, (2)#11, & #13

Product Specifications:

EasyInstall Faucet, Lever Handles w/ VR Screws,
Compression Cartridges, 8" Inlet Centers,
135X Gooseneck w/ 2.2 GPM VR Laminar Flow Device

Drawn JRM	Checked GEF	Approved JHB
Scale: NTS		Date: 09/11/08