



T&S BRASS AND BRONZE WORKS, INC.

2 Saddleback Cove / P.O. Box 1088
Travelers Rest, SC 29690



REG. #A2601
ISO #9001

Model No.

B-2858

Item No.

Travelers Rest, SC: 800-476-4103 Simi Valley, CA: 800-423-0150 Fax: 864-834-3518 www.tsbrass.com

This Space for Architect/Engineer Approval

Job Name _____ Date _____

Model Specified _____ Quantity _____

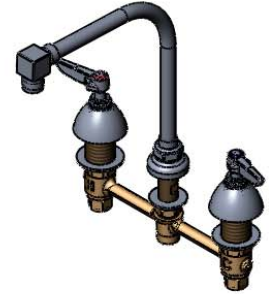
Customer/Wholesaler _____

Contractor _____

Architect/Engineer _____



ADA Compliant



Lever Handles w/
Color Coded Indexes

Ø 1-11/16"
[43mm]
Swivel
Deck
Flange

8" Swing Nozzle
w/ 2.2 GPM Aerator

8 1/16"
[205mm]

8"
[203mm]

9 13/16"
[248mm]

Mounting
Surface

Fits Sinks
Up To
1-1/4" Thick
[36mm]

1/2" NPSM
Coupling Nuts

Ø 2-1/4"
[57mm]
Escutcheons

8"
[203mm]

Note: Rough-In Required:

Ø 1" [25mm] for Center Shank

Ø 1-1/2" [38mm] for Hot/Cold Side [1-1/4" [32mm] Minimum]

Product Specifications:

**EasyInstall Faucet, Lever Handles,
Compression Cartridges, 8" Inlet Centers &
Swing Nozzle w/ 2.2 GPM Aerator**

Drawn
JRM

Checked
GEF

Approved
JHB

Scale:

NTS

Date:

9/11/08



T&S BRASS AND BRONZE WORKS, INC.

2 Saddleback Cove / P.O. Box 1088
Travelers Rest, SC 29690



REG. #A2601
ISO #9001

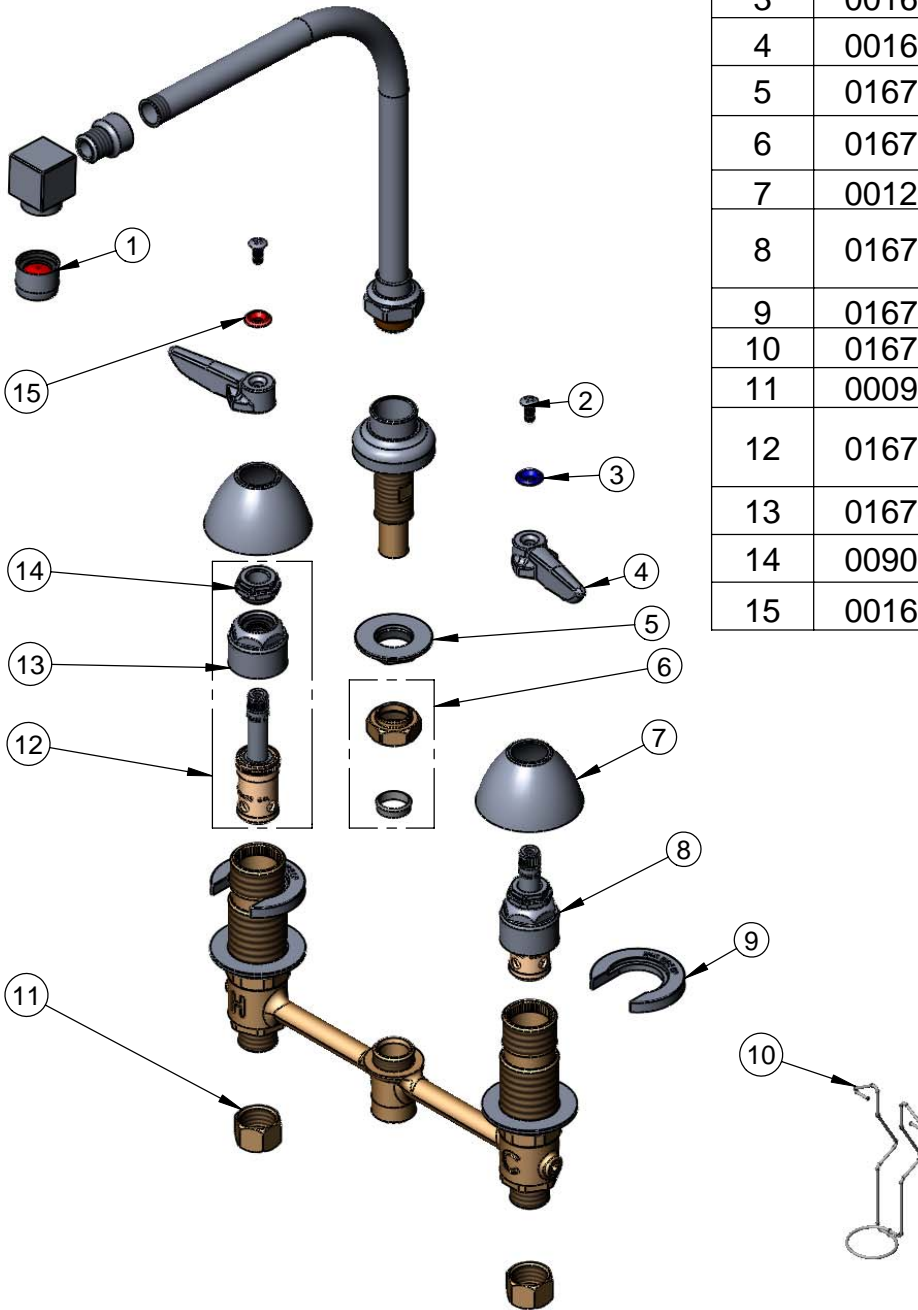
Model No.

B-2858

Item No.

Travelers Rest, SC: 800-476-4103 Simi Valley, CA: 800-423-0150 Fax: 864-834-3518 www.tsbrass.com

ITEM NO.	SALES NO.	DESCRIPTION
1	B-0199-01	2.2GPM Aerator
2	000922-45	Lever Handle Screw
3	001660-45	Blue Index-CW
4	001638-45	Lever Handle
5	016742-45	Center Flange Nut
6	016745-45	Compression Nut & Fitting
7	001257-40	Bell Escutcheon
8	016752-40	CWS EasyInstall LTC Eterna (Teflon)
9	016749-45	C-Washer
10	016777-45	CWS Hanger
11	000958-20	Coupling Nut
12	016753-40	CWS EasyInstall RTC Eterna (Teflon)
13	016743-25	CWS Bonnet Assembly
14	009002-25	Packing Nut Assembly
15	001661-45	Red Index-HW



017245-40
Installation Repair Kit
Includes #5, (2)#9, & #10

Product Specifications:

EasyInstall Faucet, Lever Handles, Compression Cartridges, 8" Inlet Centers & Swing Nozzle w/ 2.2 GPM Aerator

Drawn JRM	Checked GEF	Approved JHB
Scale: NTS		Date: 9/11/08