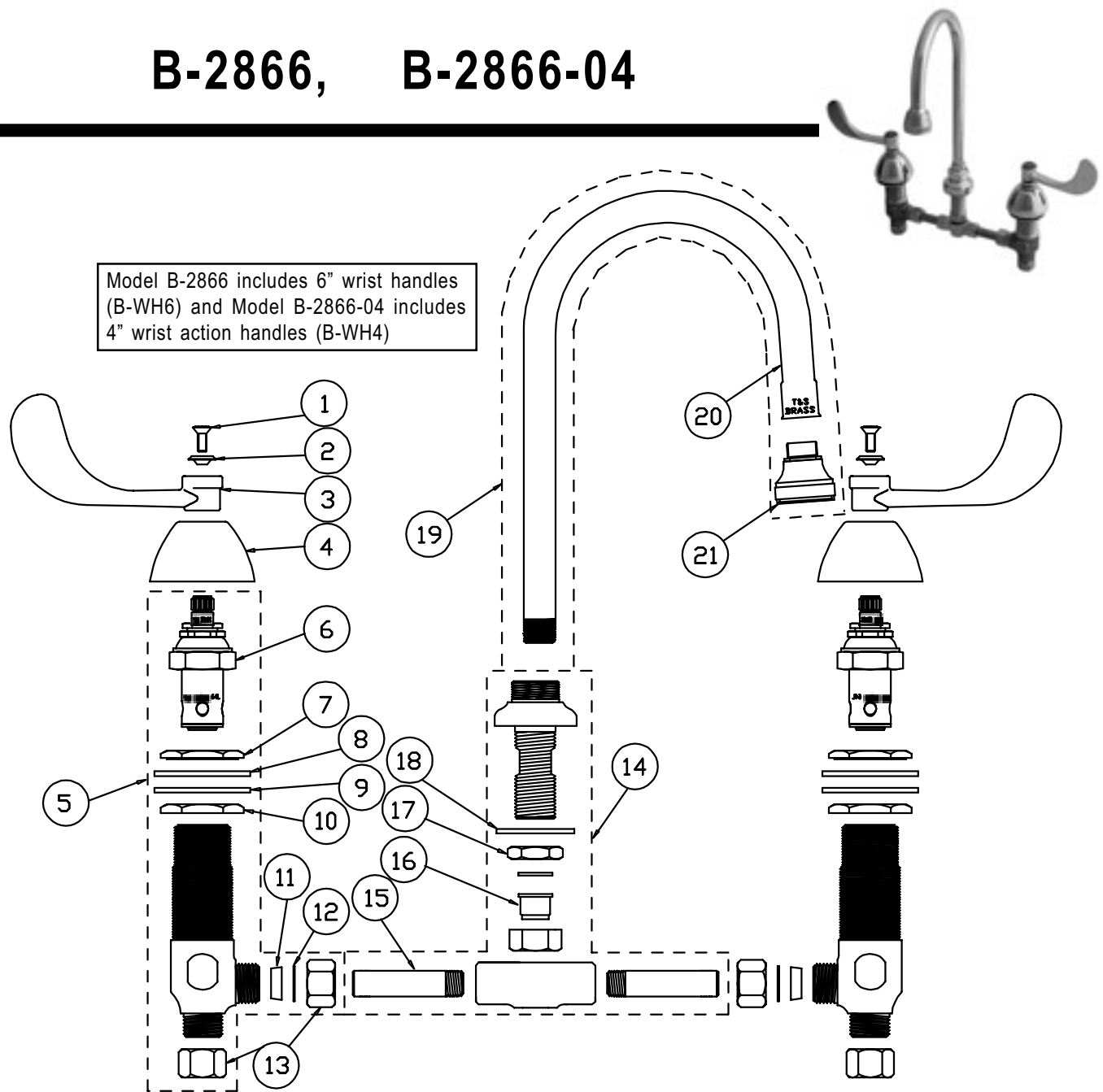


B-2866, B-2866-04



Medical Commercial Faucet Assembly

1	Screw, Handle	000925-45	10	Locknut, Body Bottom	000960-20
2	Index, Snap-In, Blue/Cold	001686-45	11	Washer, Yoke	001091-45
	Index, Snap-In, Red/Hot	001194-45	12	Washer	000981-45
3	Handle, Wrist Action, 6" (B-2866)	B-WH6	13	Nut, Coupling	000958-20
	Handle, Wrist Action, 4" (B-2866-04)	B-WH4	14	Asm, Center Body	006217-40
4	Escutcheon	001257-40	15	Nipple	000342-20
5	Asm, Body - Cold	161A	16	Insert	003700-45
	Asm, Body - Hot	162A	17	Locknut	002954-45
6	Asm, Spindle, Eterna - RH/Cold	006478-40	18	Washer	000999-45
	Asm, Spindle, Eterna - LH/Hot	006477-40	19	Asm, Rigid Gooseneck	133X
7	Locknut, Body Top	000959-20	20	Gooseneck	133X
8	Washer, Body	002290-45	21	Asm, Rosespray	B-0103
9	Washer, Nipple	001006-45			

