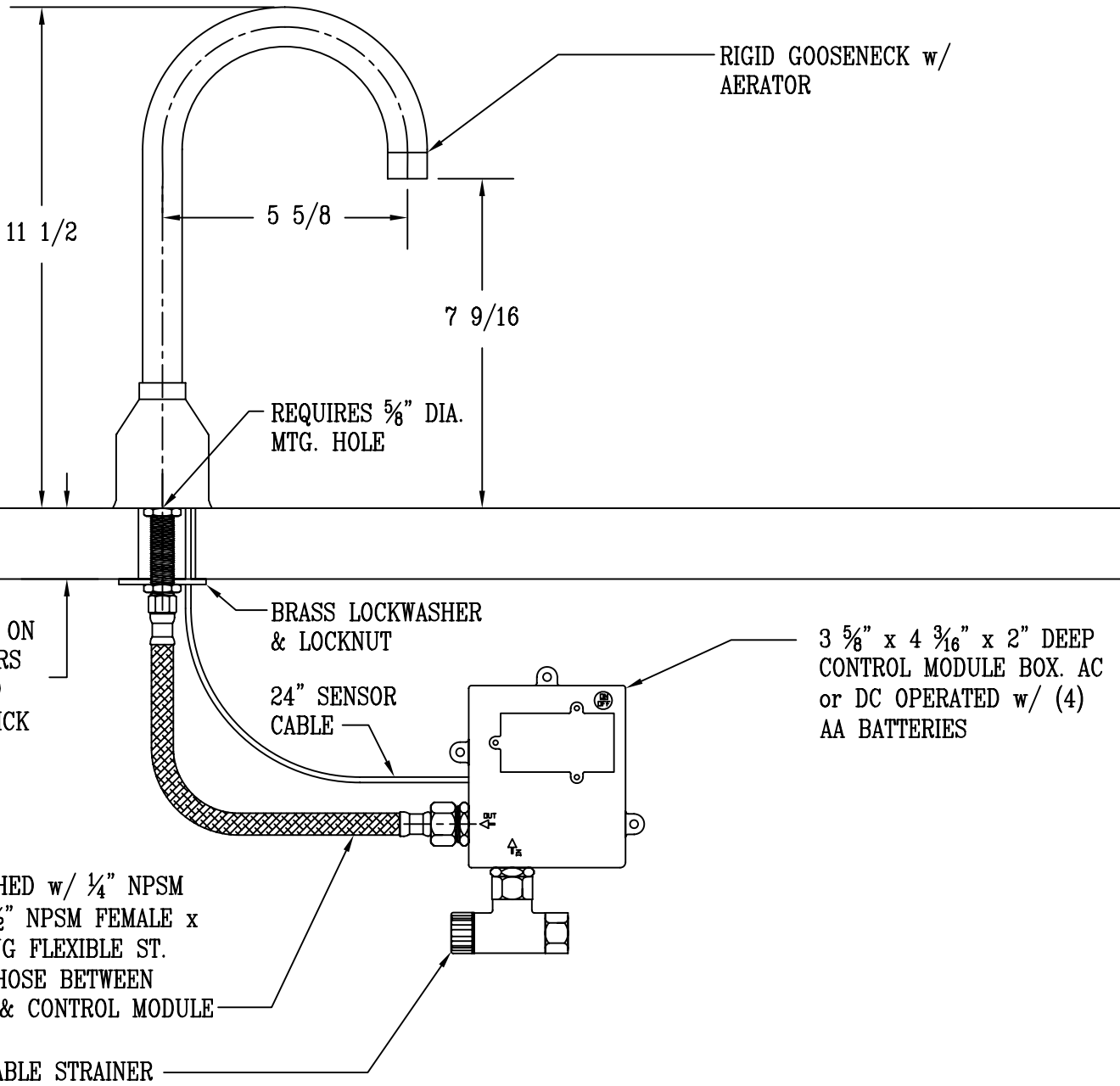


This Space For Architect/Engineer Approval

Job Name _____ Date _____
 Model Specified _____ Quantity _____
 Customer/Wholesaler _____
 Contractor _____
 Architect/Engineer _____



FOR USE ON
 COUNTERS
 UP TO
 2 1/4" THICK

3 5/8" x 4 3/16" x 2" DEEP
 CONTROL MODULE BOX. AC
 or DC OPERATED w/ (4)
 AA BATTERIES

FURNISHED w/ 1/4" NPSM
 FE. x 1/2" NPSM FEMALE x
 18" LONG FLEXIBLE ST.
 STEEL HOSE BETWEEN
 SHANK & CONTROL MODULE

NOTE:
 SUPPLY STOPS BY OTHERS

MODEL NUMBER 5EF-EU1DG	DATE 3/21/06	SCALE 1:2	DRAWN DHL	CHECKED WJS	APPROVED JHB
---------------------------	-----------------	--------------	--------------	----------------	-----------------



DESCRIPTION
 EQUIP SENSOR FAUCET: EU (EUROPEAN STYLE)
 FAUCET AND CONTROL MODULE ONLY,
 DECK MOUNT, GOOSENECK

equip Foodservice Accessories
 P.O. BOX 1088, 2 SADDLEBACK COVE
 TRAVELERS REST, SOUTH CAROLINA 29690
 PHONE: 800.891.4808 FAX: 800.868.0084