



T&S BRASS AND BRONZE WORKS, INC.

2 SADDLEBACK COVE / P.O. BOX 1088 / TRAVELERS REST, SC 29690

(803) 834-4102 TELEX 57-0311 FAX (803) 834-3518

Model No.

B-0232-EE

Item No.:

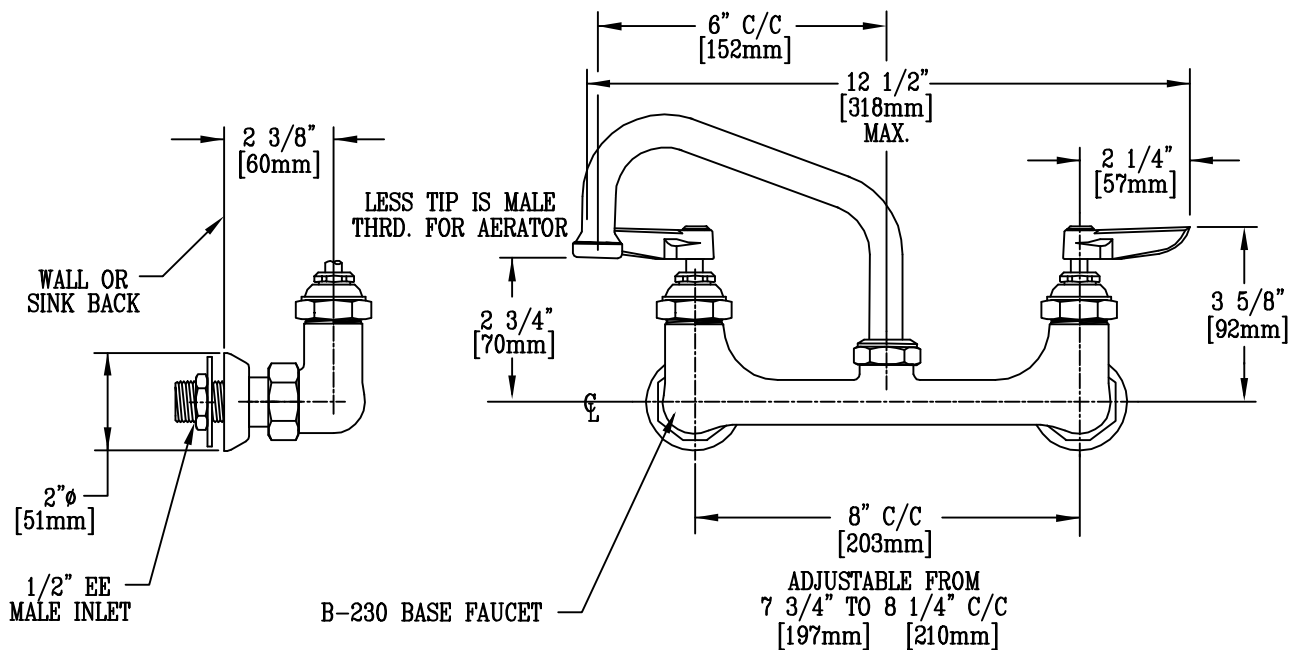
Job Name:

Architect/Engineer Approval:

Notes:



ADA COMPLIANT



NOTES :

1. ALSO AVAILABLE WITH B-WH-4" OR B-WH-6" WRIST ACTION BLADE HANDLES.
2. ALSO AVAILABLE WITH MODEL #B-SD SOAP DISH
3. NOZZLE SWINGS 360°
4. ALSO AVAILABLE WITH B-199-1 NON-SPLASH AERATOR.

Product Description:

SINK MIXING FAUCET
WITH 6" SWING NOZZLE,
& 1/2" EE MALE INLETS.

Drawn:

MCW

Checked

SCM

Scale:

3"=1'

Approved

CA

Date:

7/29/95