



**T&S BRASS AND BRONZE WORKS, INC.**  
 2 SADDLEBACK COVE / P.O. BOX 1088 / TRAVELERS REST, SC 29690  
 PHONE 800-476-4103 - FAX 864- 834-3518



Model No.

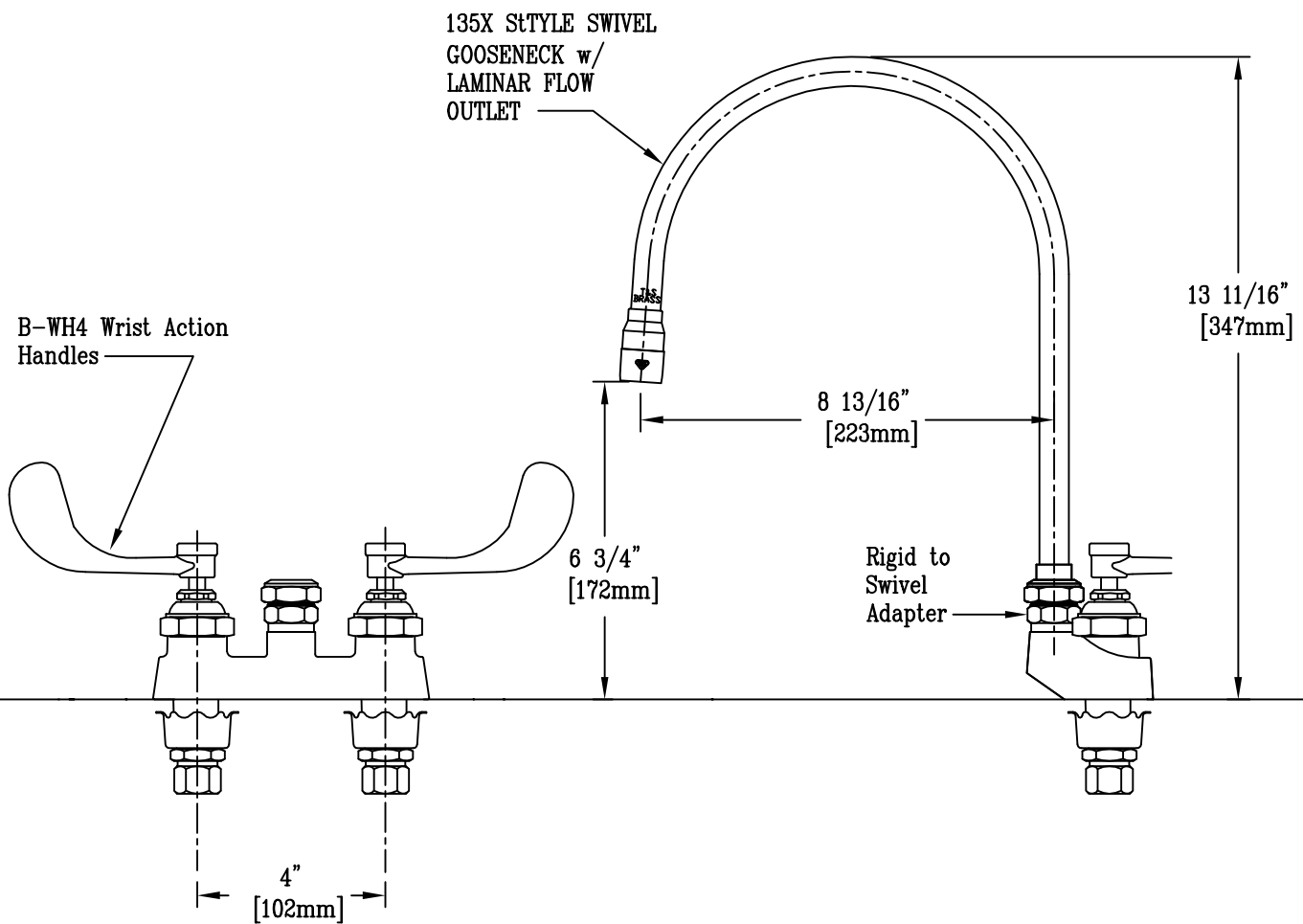
B-0892-135X

**RELIABILITY  
BUILT IN**

Job Name:

Architect/Engineer Approval:

Notes:



⊙ ⊙ FURNISHED w/ (2) 007x WASHERS TO CONVERT SWIVEL GOOSENECK to RIGID. TO INSTALL: UNSCREW GOOSENECK, LIFT OUT, & PLACE WASHERS IN SWIVEL BODY. THEN RE-INSTALL GOOSENECK

Product Description:  
 4" CENTERSET MIXING FAUCET WITH  
 8 13/16" SPREAD SWIVEL GOOSENECK, LAMINAR FLOW OUTLET,  
 1/4-TURN CARTRIDES & 4" WRIST ACTION HANDLES

Drawn:

WJS

Checked

LEL

Scale:

1 : 4

Approved

JHB

Date:

6/21/05