



T&S BRASS AND BRONZE WORKS, INC.

2 Saddleback Cove / P.O. Box 1088
Travelers Rest, SC 29690



REG. #A2601
ISO #9001

Model No.
B-0893

Item No.

Travelers Rest, SC: 800-476-4103 Simi Valley, CA: 800-423-0150 Fax: 864-834-3518 www.tsbrass.com

This Space for Architect/Engineer Approval

Job Name _____ Date _____

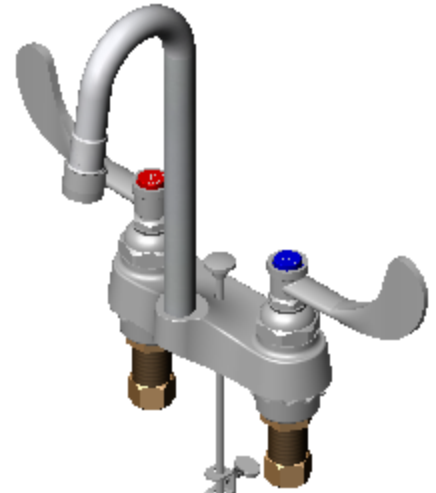
Model Specified _____ Quantity _____

Customer/Wholesaler _____

Contractor _____

Architect/Engineer _____

- Variations or Applicable Options:
- WH6 6" Wrist Action Handles
 - 177F Lever Handles
 - 175F 4-Arm Kitchen Handles
 - B-0199-21 2.2 Laminar Flow Outlet



Furnished w/ Pop-Up Drain Assembly

Rigid Gooseneck w/ 2.2 GPM Aerator

4" Wrist Action Handles

9 7/16" (240mm)

5 11/16" (144mm)

1/2" NPSM Male Shanks w/ Cplg. Nuts

4" (102mm)

4 1/16" (103mm)

Product Specifications:

4" Centerset Mixing Faucet w/ 1/2" NPSM Male Shanks, Eterna Cartridges, 4" Wrist Action Handles, Rigid Gooseneck, 2.2 GPM Aerator, Pop-Up Drain

Drawn
WJS

Checked
GEF

Approved
JHB

Scale:

1:4

Date:

09/18/06



T&S BRASS AND BRONZE WORKS, INC.

2 Saddleback Cove / P.O. Box 1088
Travelers Rest, SC 29690



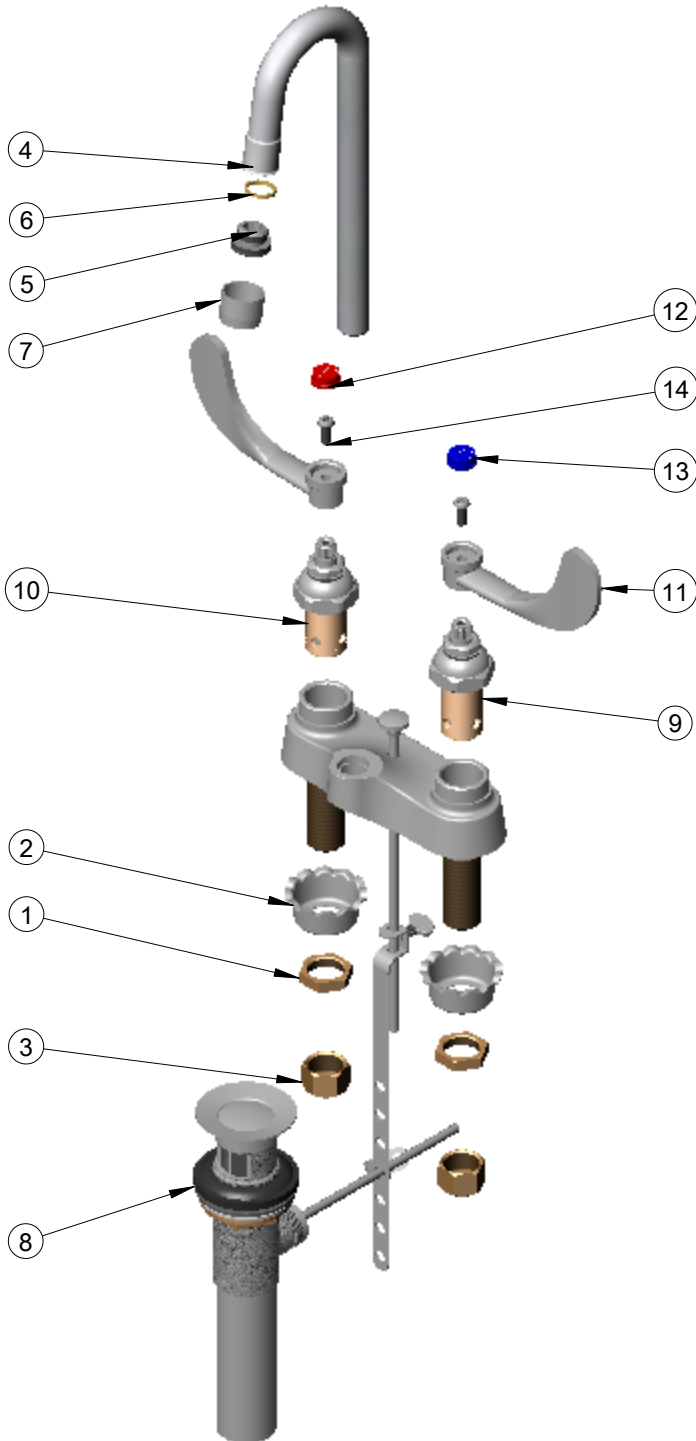
REG. #A2601
ISO #9001

Model No.

B-0893

Item No.

Travelers Rest, SC: 800-476-4103 Simi Valley, CA: 800-423-0150 Fax: 864-834-3518 www.tsbrass.com



ITEM NO.	SALES NO.	DESCRIPTION
1	002954-45	Shank Lock Nut
2	001000-45	Rosette Washer
3	000958-20	Coupling Nut
4	000393-40	Rigid Gooseneck
5	044A	3/8" to Aer. Adapter
6	009636-45	Washer
7	B-0199-01	2.2 GPM Aerator
8	B-0898	Pop-Up
9	006009-40	Cold Spindle Asm
10	006010-40	Hot Spindle Asm
11	B-WH4	4" Wrist Action Handle
12	001194-45	Red HW Index
13	001686-45	Blue CW Index
14	000925-45	Lab Handle Screw

Product Specifications:

4" Centerset Mixing Faucet w/ 1/2" NSPM Male Shanks, Eterna Cartridges, 4" Wrist Action Handles, Rigid Gooseneck, 2.2 GPM Aearator, Pop-Up Drain

Drawn WJS	Checked GEF	Approved JHB
Scale: 1:4		Date: 09/18/06