



T&S BRASS AND BRONZE WORKS, INC.

2 SADDLEBACK COVE / P.O. BOX 1088 / TRAVELERS REST, SC 29690

PHONE 800-476-4103

FAX 864-834-3518



REG.#A2601
ISO #9002

Model No.

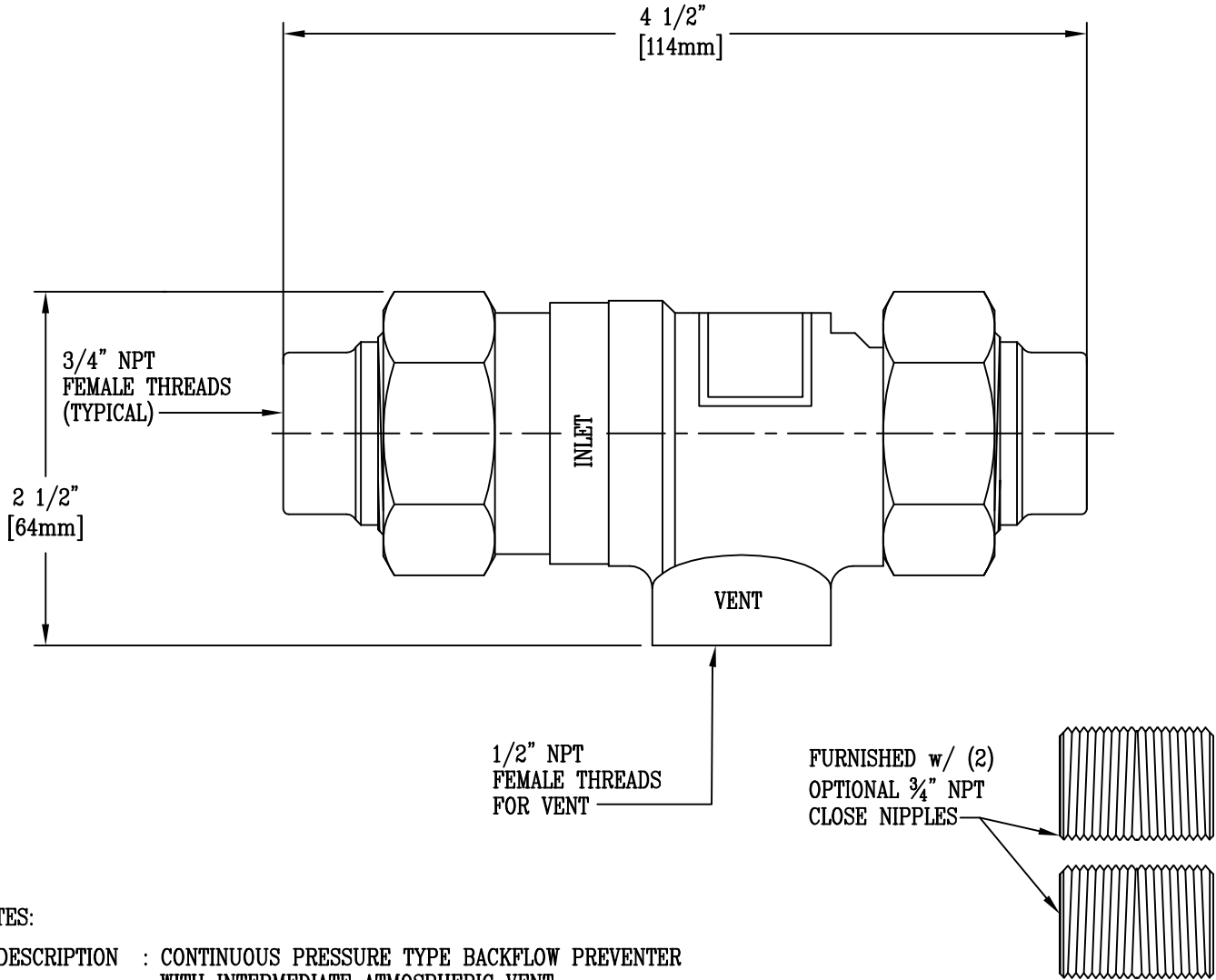
B-0962

Item No.:

Job Name:

Architect/Engineer Approval:

Notes:



NOTES:

1. DESCRIPTION : CONTINUOUS PRESSURE TYPE BACKFLOW PREVENTER WITH INTERMEDIATE ATMOSPHERIC VENT.
2. CONSTRUCTION : CHROME PLATED BRONZE BODY WITH STAINLESS STEEL WORKING PARTS AND RUBBER DIAPHRAM AND DISC. WEIGHT = 1.81 LBS.
3. RATING : MAX. WORKING PRESSURE 175 PSI, MIN. REQ'D PRESSURE: 25 PSI, TEMP. RANGE: 33°-250°
4. REPAIR KIT AVAILABLE BY ORDERING B-0962-RK

Product Description:
CONTINUOUS PRESSURE TYPE
BACKFLOW PREVENTER WITH
ATMOSPHERIC VENT, 3/4" NPT INLET

Drawn:

WJS

Approved

JHB

Checked

GEF

Scale:

1 : 1

Date:

09/22/06