

T&S BRASS AND BRONZE WORKS, INC.
 2 SADDLEBACK COVE / P.O. BOX 1088 / TRAVELERS REST, SC 29690
 PHONE 800-476-4103 FAX 864- 834-3518



Model No.
 B-2856-L
 Item No.:

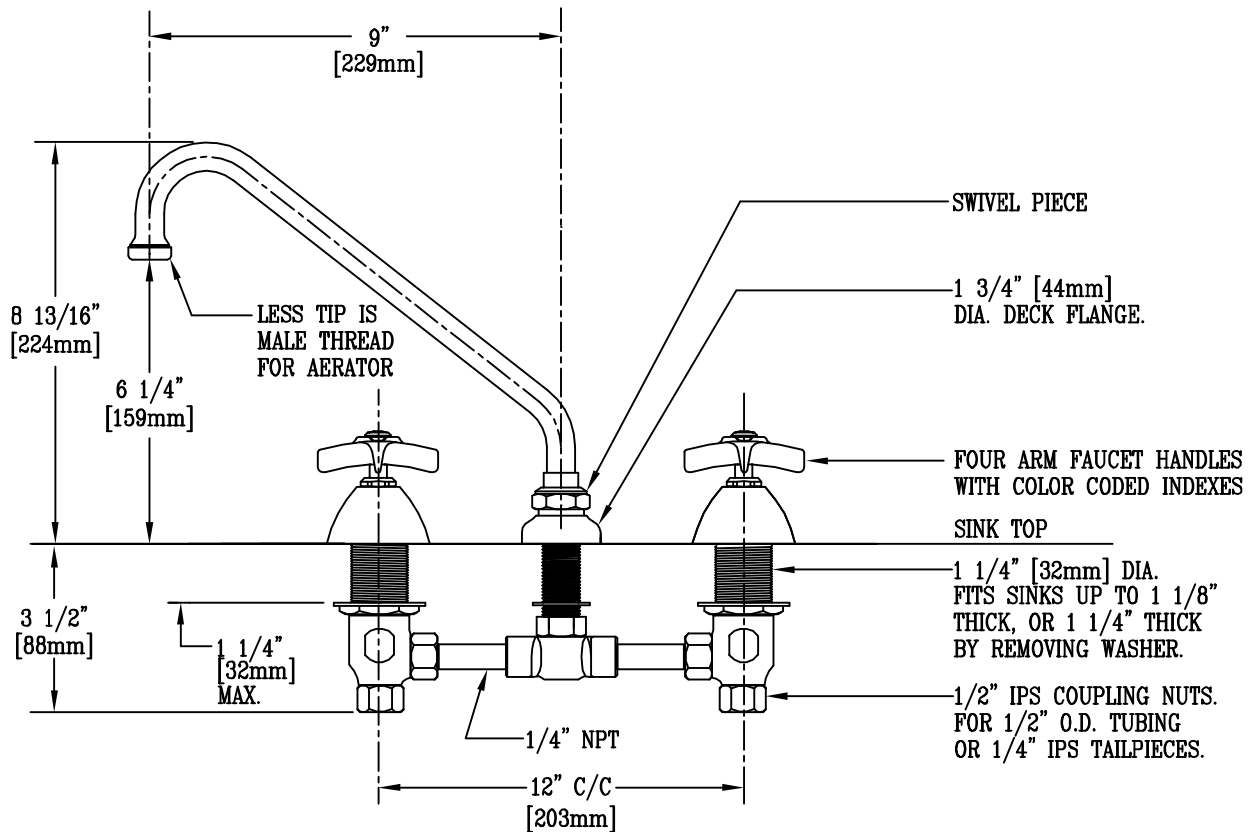
Job Name:

Architect/Engineer Approval:

Notes:



ADA COMPLIANT



NOTE: ROUGH-IN REQUIRED:
 ø7/8 FOR CENTER SHANK
 ø1 1/4 FOR HOT/COLD SIDE BODIES

NSF STANDARD 61, SECTION 9 CERTIFIED.

Product Description:

DECK MOUNTED COMMERCIAL FAUCET WITH SWIVEL GOOSENECK & AERATOR OUTLET, FOUR ARM HANDLES, & 12" INLET CENTERS

Drawn:

ARD

Approved

CA

Checked

MWR

Scale:

3"=1'

Date:

2/24/94