



T&S BRASS AND BRONZE WORKS, INC.

2 SADDLEBACK COVE / P.O. BOX 1088 / TRAVELERS REST, SC 29690

PHONE 800-476-4103

FAX 864- 834-3518



REG.#A2601
ISO #9002

Model No.

BL-4700-02

Item No.:

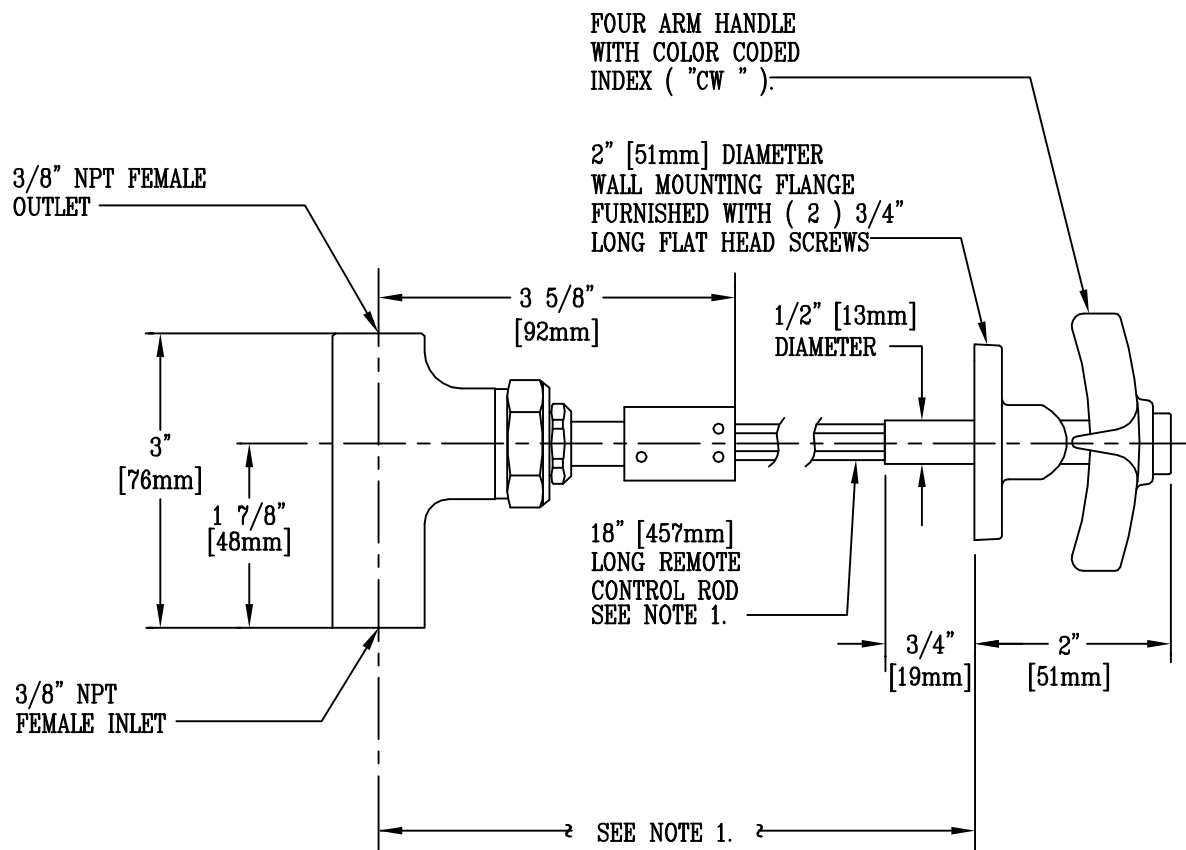
Job Name:

Architect/Engineer Approval:

Notes:



ADA COMPLIANT



NOTE 1: STANDARD ROD LENGTH IS 18". WHEN ORDERING, SPECIFY ACTUAL LENGTH DESIRED. MINIMUM IS 4 1/2" [114mm]

NOTE 2: VALVE CAN BE FURNISHED WITH 3/8" NPT MALE OR 1/2" NPT MALE INLET WHEN SPECIFIED.

NOTE 3: IF REMOTE CONTROL VALVE IS TO BE USED ON METAL FURNITURE, SPECIFY "MF" AFTER THE MODEL NUMBER, AND SPECIAL BUSHING WILL BE FURNISHED IN PLACE OF THE PLATE ORDINARILY FURNISHED FOR WOOD.

NOTE 4: MAY ALSO BE FURNISHED WITH ANGLE GUIDE BUSHING, OR BLACK NYLON GUIDE BUSHING.

Product Description:

REMOTE CONTROL VALVE FOR WATER WITH 4-ARM HANDLE, WALL FLANGE, & VALVE BODY WITH 3/8" NPT FEMALE INLET & OUTLET

Drawn:

WJS

Checked:

JKD

Scale:

6" = 1'

Approved

CA

Date:

11/22/95