

T&S BRASS AND BRONZE WORKS, INC.
 2 SADDLEBACK COVE / P.O. BOX 1088 / TRAVELERS REST, SC 29690
 PHONE 800-476-4103 FAX 803-834-3518



Model No.

BL-5725-04

Item No.:

Job Name:

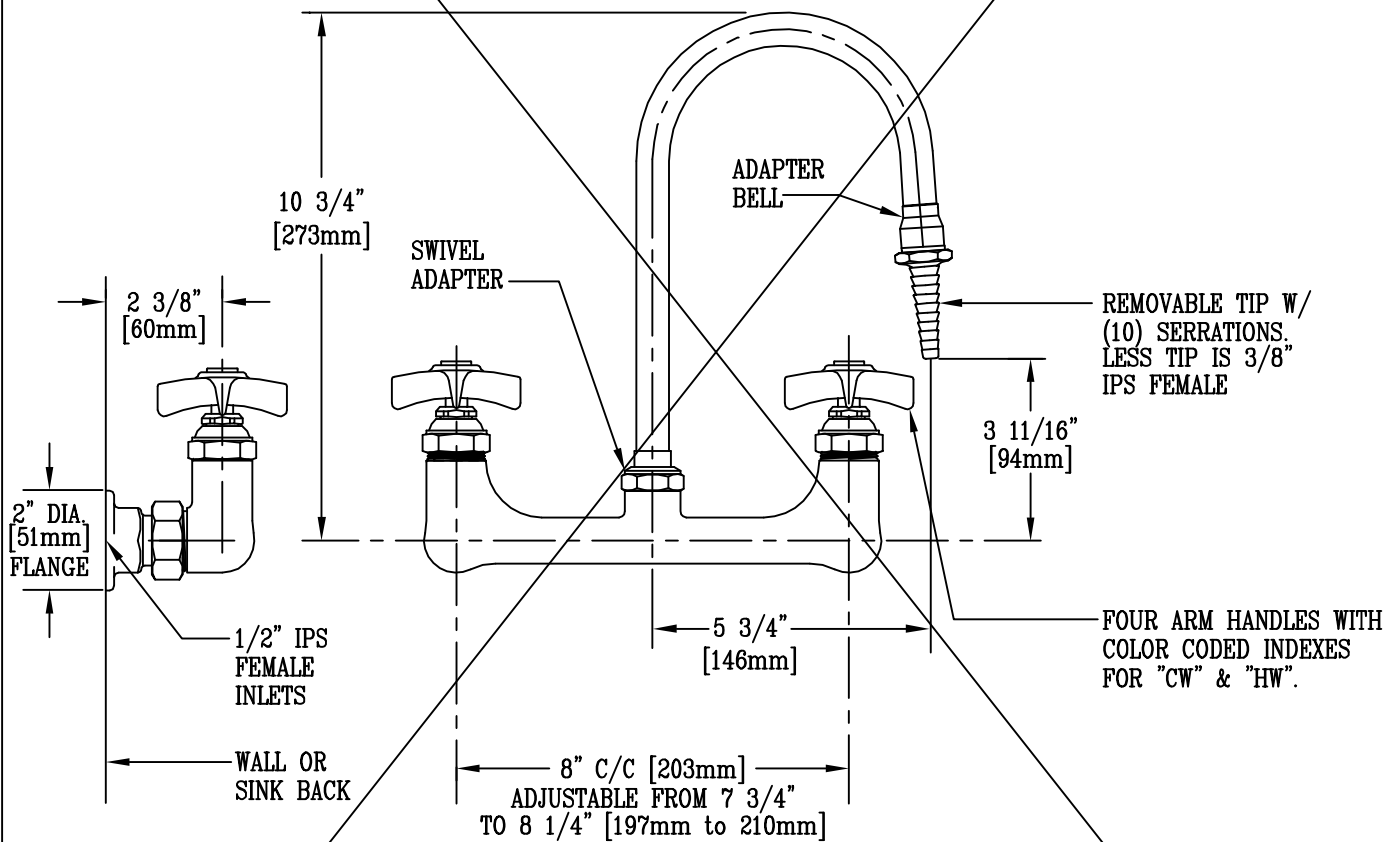
Architect/Engineer Approval:

Notes:



ADA COMPLIANT

IDENTICAL TO BL-5725-02.



NOTE 1: 3/4" FEMALE INLETS ALSO AVAILABLE.

NOTE 2: ALSO AVAILABLE W/ BL-5500-3 6" WRIST ACTION HANDLES, OR BL-5500-1 4" WRIST ACTION HANDLES.

Product Description:

WALL MOUNTED MIXING FAUCET WITH SWIVEL GOOSENECK, SERRATED TIP OUTLET, 4-ARM HANDLES, & 1/2" IPS FEMALE INLETS.

Drawn:

WJS

Checked:

ARD

Scale:

3" = 1'

Approved

CA

Date:

9/20/95