



T&S BRASS AND BRONZE WORKS, INC.
 2 SADDLEBACK COVE / P.O. BOX 1088 / TRAVELERS REST, SC 29690
 PHONE 800-476-4103 FAX 803- 834-3518



Model No.

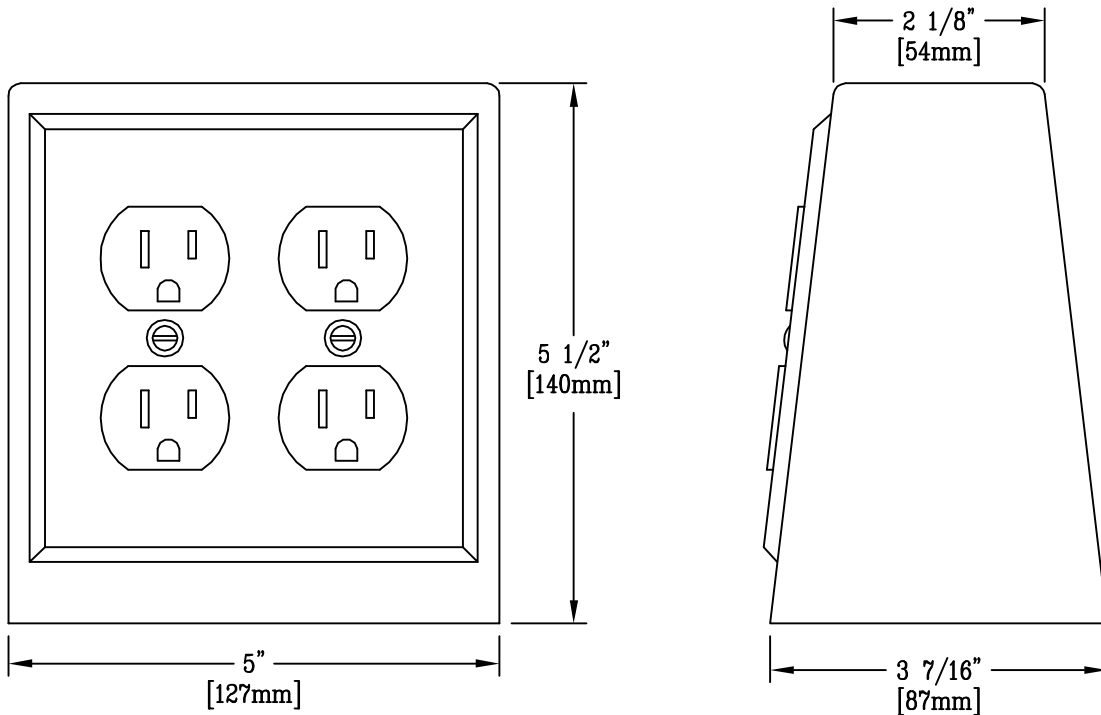
BL-8055-DD

Item No.:

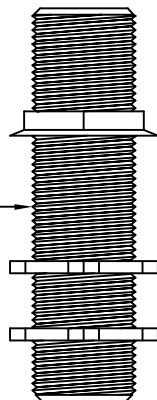
Job Name:

Architect/Engineer Approval:

Notes:



3/4" N.P.S.M
 X 4" NIPPLE
 WITH WASHER
 AND LOCKNUTS



NOTES:

1. POLISHED ALUMINUM ELECTRICAL BOX SUPPLIED WITH DUPLEX, 3 WIRE RECEPTACLES, COVERPLATE AND SUPPLY NIPPLE WITH LOCKNUTS AND WASHER.
2. CONSTRUCTED OF U.L. APPROVED COMPONENTS.

Product Description:

DOUBLE GANG, SINGLE FACE
 ELECTRICAL BOX

Drawn:

TEH

Checked

JKD

Scale:

6" = 1'

Approved

MVW

Date:

10-25-00