



T&S BRASS AND BRONZE WORKS, INC.
 2 SADDLEBACK COVE / P.O. BOX 1088 / TRAVELERS REST, SC 29690
 PHONE 800-476-4103 FAX 864- 834-3518



Model No.

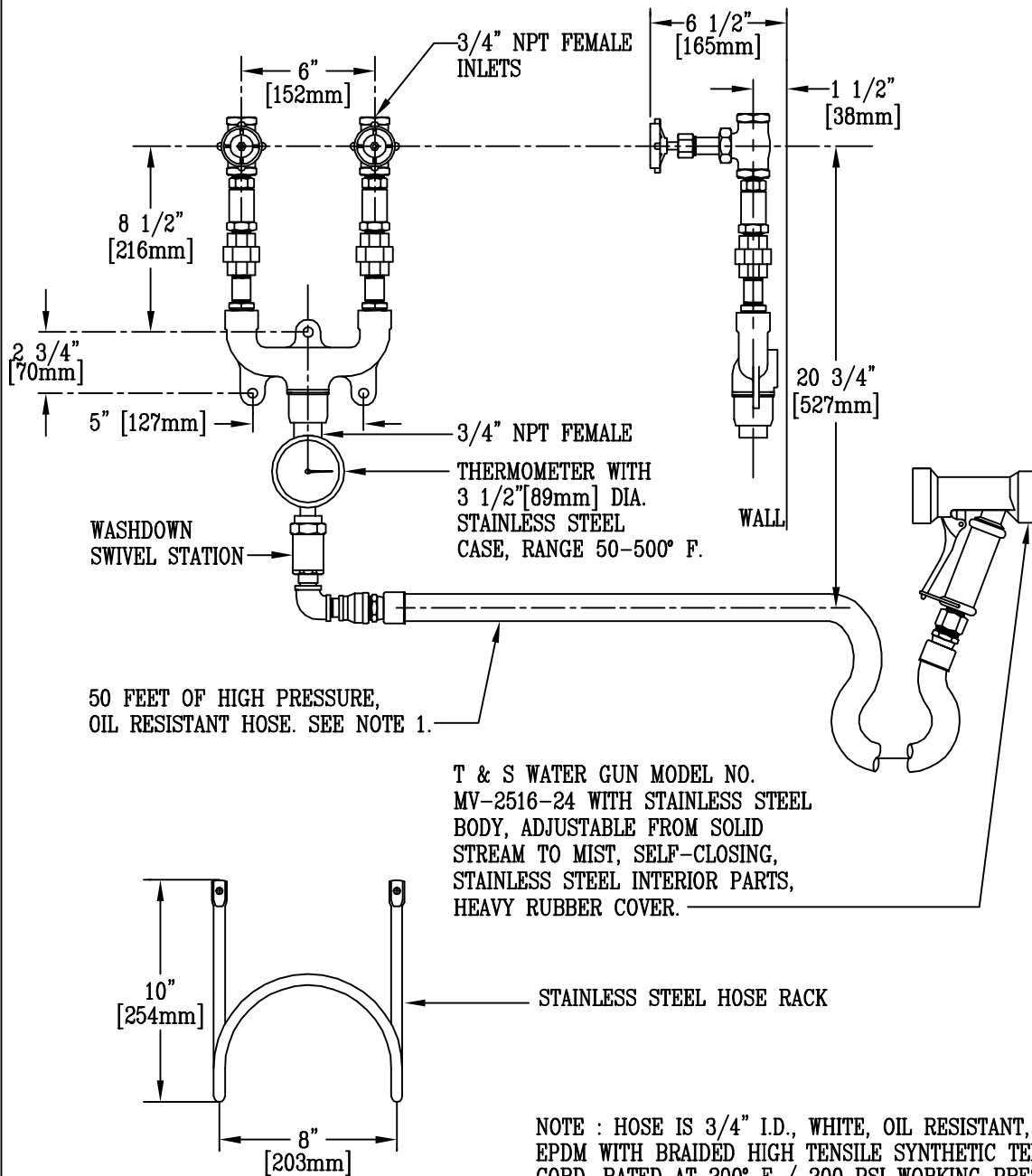
MV-0771-12CW

Item No.:

Job Name:

Architect/Engineer Approval:

Notes:



NOTE : HOSE IS 3/4" I.D., WHITE, OIL RESISTANT, 50 FT. LENGTH, EPDM WITH BRAIDED HIGH TENSILE SYNTHETIC TEXTILE CORD. RATED AT 200° F / 200 PSI WORKING PRESSURE, SWIVEL ENDS, CAST BRONZE COUPLINGS.

Product Description:

CHROME PLATED WASHDOWN STATION WITH THERMOMETER, MIXING VALVE WITH 3/4" NPT INLETS, 50 FT. HOSE WITH WATER GUN & HOSE RACK.

Drawn:

LEL

Approved

MVW

Checked

JKD

Scale:

1 : 8

Date:

2/12/03