



**T&S BRASS AND BRONZE WORKS, INC.**

2 SADDLEBACK COVE / P.O. BOX 1088 / TRAVELERS REST, SC 29690

PHONE 800-476-4103

FAX 864- 834-3518



REG.#A2601  
ISO #9001

Model No.

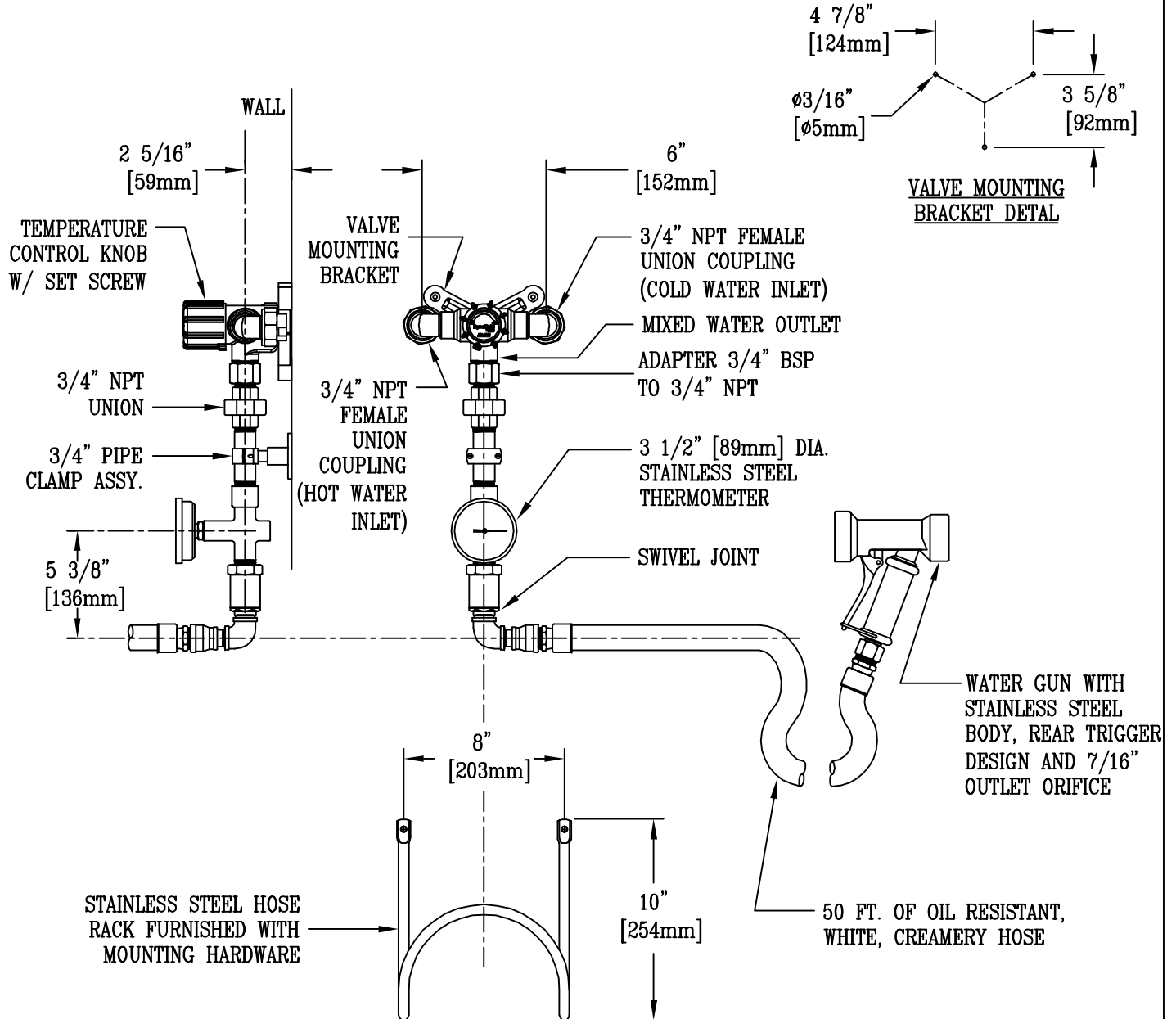
MV-3000-CW

Item No.:

Job Name:

Architect/Engineer Approval:

Notes:



**NOTES:**

1. MINIMUM OPERATING PRESSURE: 7PSI
2. MAXIMUM OPERATING PRESSURE: 90PSI
3. MAXIMUM STATIC PRESSURE: 150PSI

Product Description:  
WASHDOWN STATION MIXING VALVE,  
3/4" NPT COUPLINGS, CHROME FINISH,  
TEMP. CONTROL KNOB & CHECK VALVE

|           |          |        |
|-----------|----------|--------|
| Drawn:    | Checked: | Scale: |
| LEL       | JKD      | 1 : 8  |
| Approved: | Date:    |        |
| MVW       | 2/12/03  |        |