



T&S BRASS AND BRONZE WORKS, INC.

2 Saddleback Cove / P.O. Box 1088
Travelers Rest, SC 29690



REG. #A2601
ISO #9001

Model No.

B-15K

Item No.

Travelers Rest, SC: 800-476-4103 Simi Valley, CA: 800-423-0150 Fax: 864-834-3518 www.tsbrass.com

This Space for Architect/Engineer Approval

Job Name _____ Date _____

Model Specified _____ Quantity _____

Customer/Wholesaler _____

Contractor _____

Architect/Engineer _____



000922-45
LEVER HANDLE
SCREW
(12 SUPPLIED)



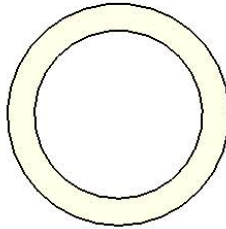
000933-45
SCREW
(32 SUPPLIED)



001098-45
ETERNA SPINDLE
PACKING SEAL
(50 SUPPLIED)



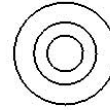
009002-25
PACKING NUT/
LOCK NUT
(6 SUPPLIED)



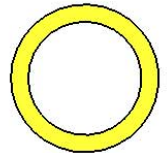
002601-45
GASKET
(25 SUPPLIED)



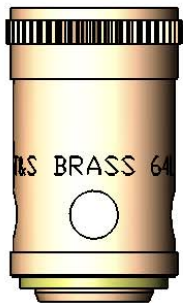
001074-45
O-RING
(25 SUPPLIED)



001136-45
TEFLON SEAT
WASHER
(32 SUPPLIED)



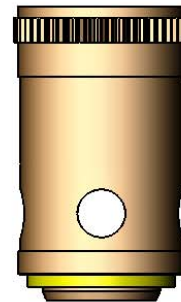
001022-45
BOTTOM
GASKET
(25 SUPPLIED)



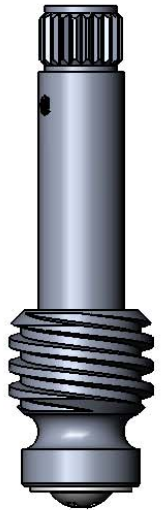
000789-20
REMOVEABLE INSERT
ASSEMBLY. LEFT HAND,
CONSISTING OF
REMOVEABLE ETERNA
INSERT AND BOTTOM
GASKET
(6 SUPPLIED)



000812-25CWS
LEFT HAND
SPINDLE
ASSEMBLY
(6 SUPPLIED)



000788-20
REMOVEABLE INSERT
ASSEMBLY. RIGHT HAND,
CONSISTING OF
REMOVEABLE ETERNA
INSERT AND BOTTOM
GASKET
(12 SUPPLIED)



000811-25CWS
RIGHT HAND
SPINDLE
ASSEMBLY
(12 SUPPLIED)

Product Specifications:

**EASYINSTALL
CONCEALED WIDESPREAD
JOB PARTS KIT**

Drawn
JRM

Checked
DHL

Approved
JHB

Scale:

1:1

Date:

11/05/08