

**T&S BRASS AND BRONZE WORKS, INC.**  
 2 SADDLEBACK COVE / P.O. BOX 1088 / TRAVELERS REST, SC 29690  
 PHONE 800-476-4103 - FAX 864-834-3518

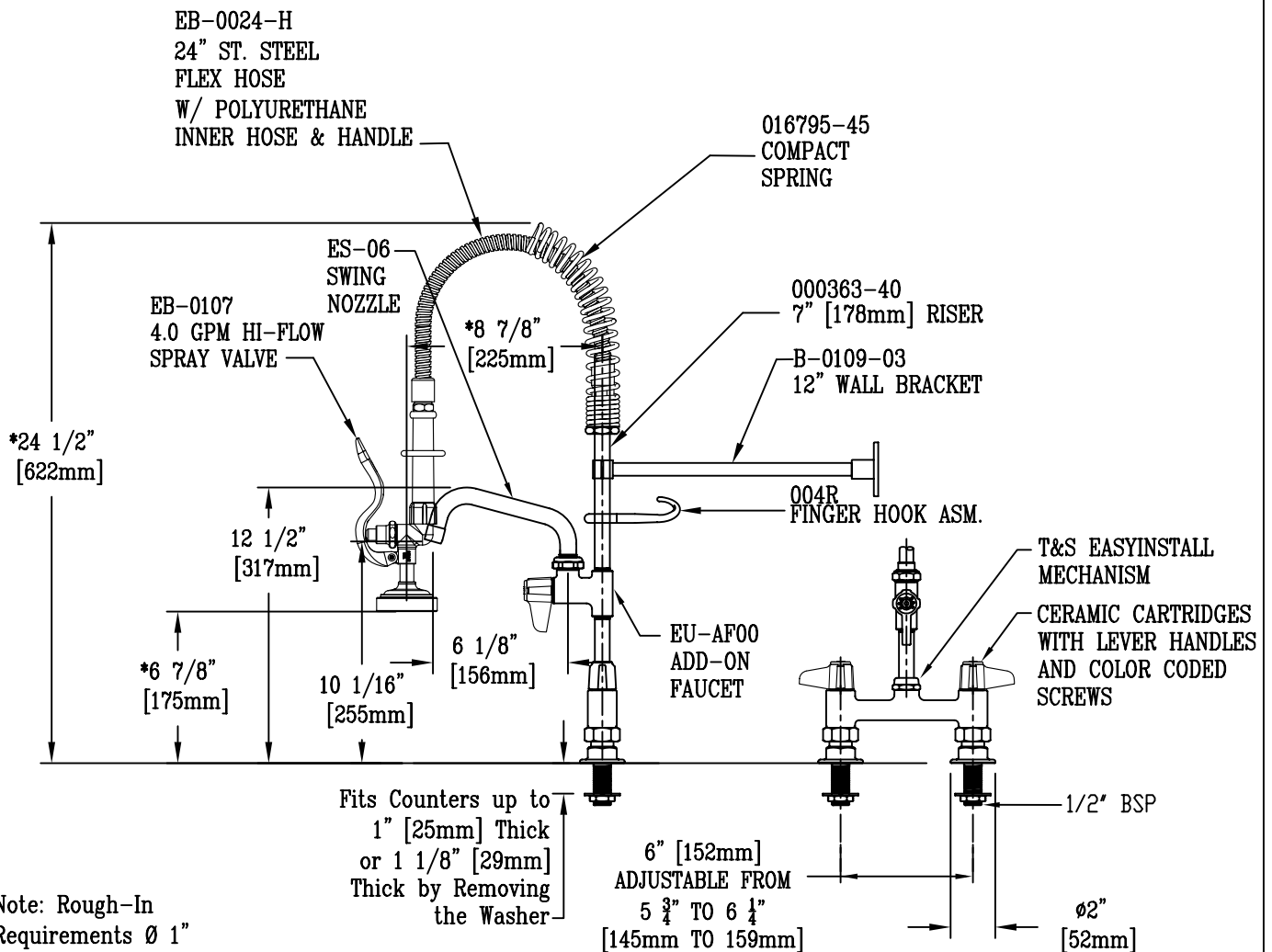


Model No.  
**EMPV-6DLN-06**  
**RELIABILITY**  
**BUILT IN**

Job Name:

Architect/Engineer Approval:

Notes:



Note: Rough-In  
 Requirements Ø 1"  
 [25mm] Holes at  
 6" [152mm] c/c

EPAAct2005 NON-COMPLIANT

\* DIMENSIONS WILL VARY ± 1" EACH INSTALLATION

Product Description:  
 MINI PRE-RINSE, ADJ. 6" [152mm] DECK MOUNT, 6" [154mm] ADD-ON FAUCET,  
 HI-FLOW SPRAY VALVE, 12" [305mm] WALL BRACKET,  
 24 1/2" [622mm] HEIGHT, 6 7/8" [175mm] CLEARANCE

Drawn: JRM	Checked GEF	Scale: 1 : 8
Approved JHB	Date: 3/20/08	