



# T&S BRASS AND BRONZE WORKS, INC.

2 Saddleback Cove / P.O. Box 1088  
Travelers Rest, SC 29690



REG. #A2601  
ISO #9001

Model No.

**B-2347-06**

Item No.

Travelers Rest, SC: 800-476-4103 Simi Valley, CA: 800-423-0150 Fax: 864-834-3518 www.tsbrass.com

This Space for Architect/Engineer Approval

Job Name \_\_\_\_\_ Date \_\_\_\_\_

Model Specified \_\_\_\_\_ Quantity \_\_\_\_\_

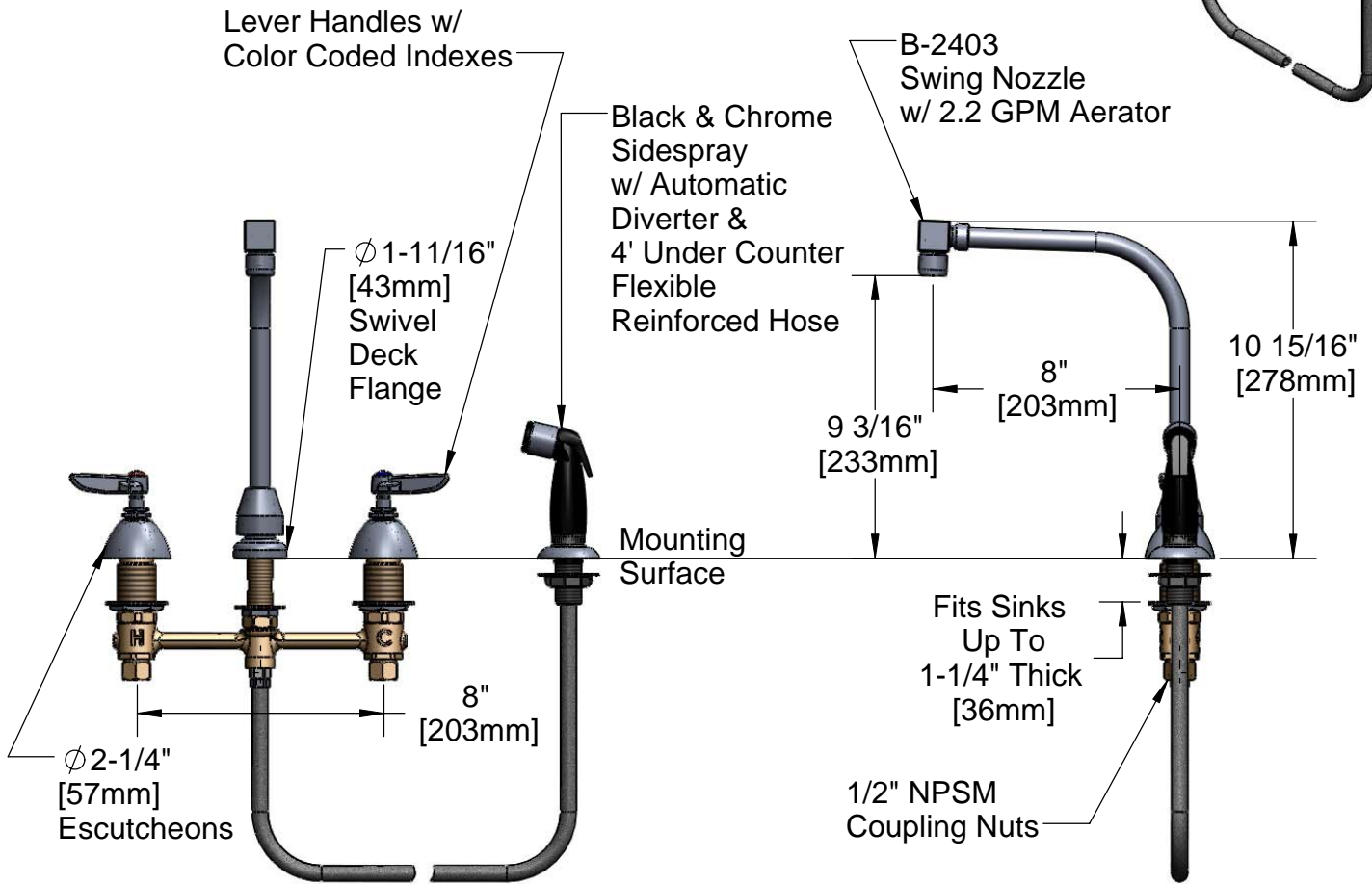
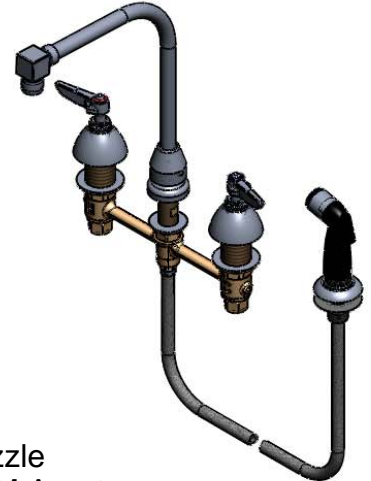
Customer/Wholesaler \_\_\_\_\_

Contractor \_\_\_\_\_

Architect/Engineer \_\_\_\_\_



**ADA Compliant**



**Note: Rough-In Required:**

$\phi 1"$  [25mm] for Center Shank

$\phi 1-1/2"$  [38mm] for Hot/Cold Side [ 1-1/4" [32mm] Minimum]

**Product Specifications:**

**EasyInstall Faucet w/ 4' Sidespray, Lever Handles, Compression Cartridges, 8" Inlet Centers & Swing Nozzle w/ 2.2 GPM Aerator**

Drawn <b>JRM</b>	Checked <b>GEF</b>	Approved <b>JHB</b>
Scale: <b>NTS</b>		Date: <b>09/11/08</b>



**T&S BRASS AND BRONZE WORKS, INC.**

2 Saddleback Cove / P.O. Box 1088  
Travelers Rest, SC 29690



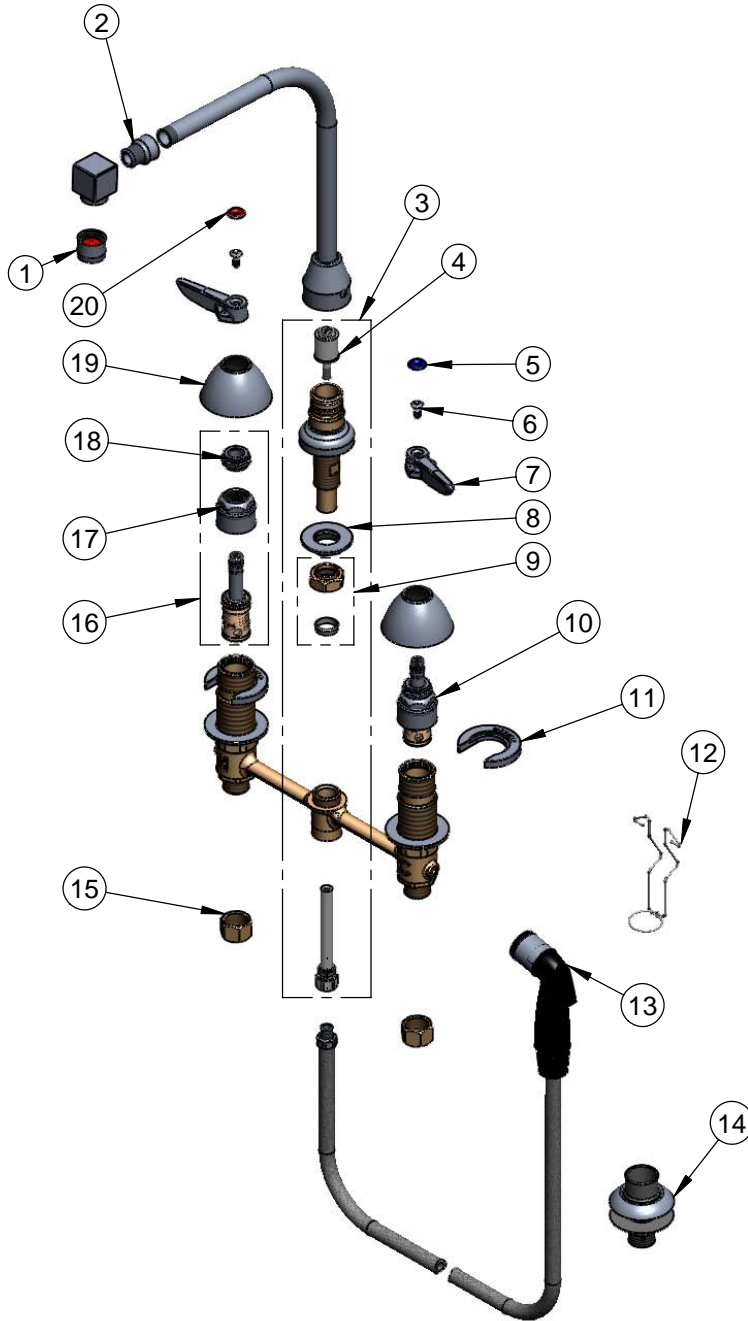
REG. #A2601  
ISO #9001

Model No.

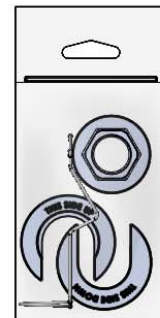
**B-2347-06**

Item No.

Travelers Rest, SC: 800-476-4103 Simi Valley, CA: 800-423-0150 Fax: 864-834-3518 www.tsbrass.com



ITEM NO.	SALES NO.	DESCRIPTION
1	B-0199-01	2.2GPM Aerator
2	000564-25	Adapter 3/8" NPT M x 5/8-27 F
3	017208-40	Center Body Diverter Asy
4	002338-45	Diverter
5	001660-45	Blue Index-CW
6	000922-45	Lever Handle Screw
7	001638-45	Lever Handle
8	016742-45	Center Flange Nut
9	016745-45	Compression Nut & Fitting
10	016752-40	EasyInstall CWS LTC Eterna (Teflon)
11	016749-45	C-Washer
12	016777-45	CWS Hanger
13	001495-45	Side Spray
14	001496-45	Hose Guide
15	000958-20	Coupling Nut
16	016753-40	EasyInstall CWS RTC Eterna (Teflon)
17	016743-25	CWS Bonnet Assembly
18	009002-25	Packing Assembly
19	001257-40	Bell Escutcheon
20	001661-45	Red Index-HW



017245-40

Installation Repair Kit  
Includes #8, (2)#11, & #12

Product Specifications:

EasyInstall Faucet w/ 4' Sidespray, Lever Handles, Compression Cartridges, 8" Inlet Centers & Swing Nozzle w/ 2.2 GPM Aerator

Drawn <b>JRM</b>	Checked <b>GEF</b>	Approved <b>JHB</b>
Scale: <b>NTS</b>		Date: <b>09/11/08</b>