



T&S BRASS AND BRONZE WORKS, INC.
 2 SADDLEBACK COVE / P.O. BOX 1088 / TRAVELERS REST, SC 29690
 PHONE 800-476-4103 - FAX 864- 834-3518



Model No.

B-0111-BR

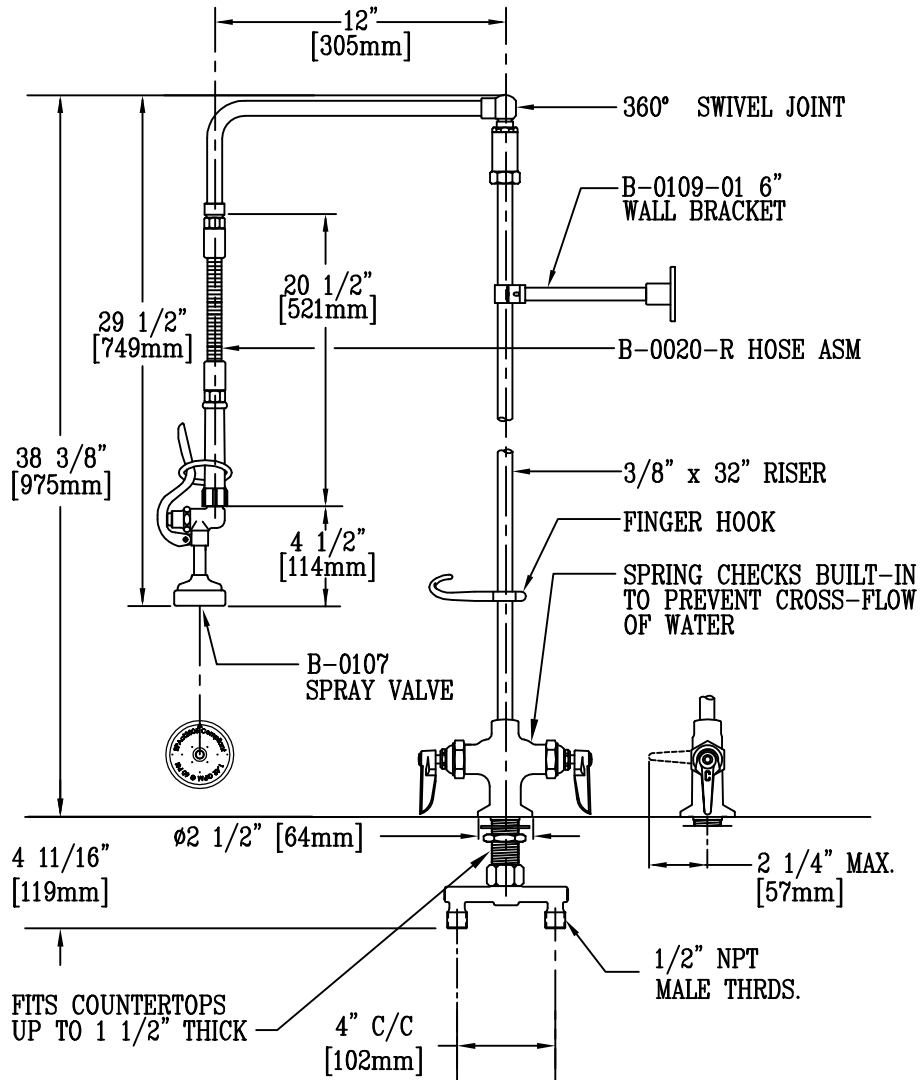
**RELIABILITY
 BUILT IN**


Job Name:

Architect/Engineer Approval:

Notes:

EPAct2005 COMPLIANT



 150A TAILPIECE AND NUT FURNISHED FOR OPTIONAL 1/4" NPT CONNECTION

Product Description:
 PRE-RINSE UNIT WITH 6" WALL BRACKET,
 12" HORIZONTAL EXTENSION, B-0107 SPRAY VALVE,
 SPREADER INLET ASM. w/ 1/2" NPT MALE INLETS

Drawn:

RJK

Approved

JHB

Checked

JRM

Scale:

1 : 8

Date:

01/04/06