



T&S BRASS AND BRONZE WORKS, INC.

2 SADDLEBACK COVE / P.O. BOX 1088 / TRAVELERS REST, SC 29690

PHONE 800-476-4103

FAX 864-834-3518



REG. #A2601
ISO #9002

Model No.

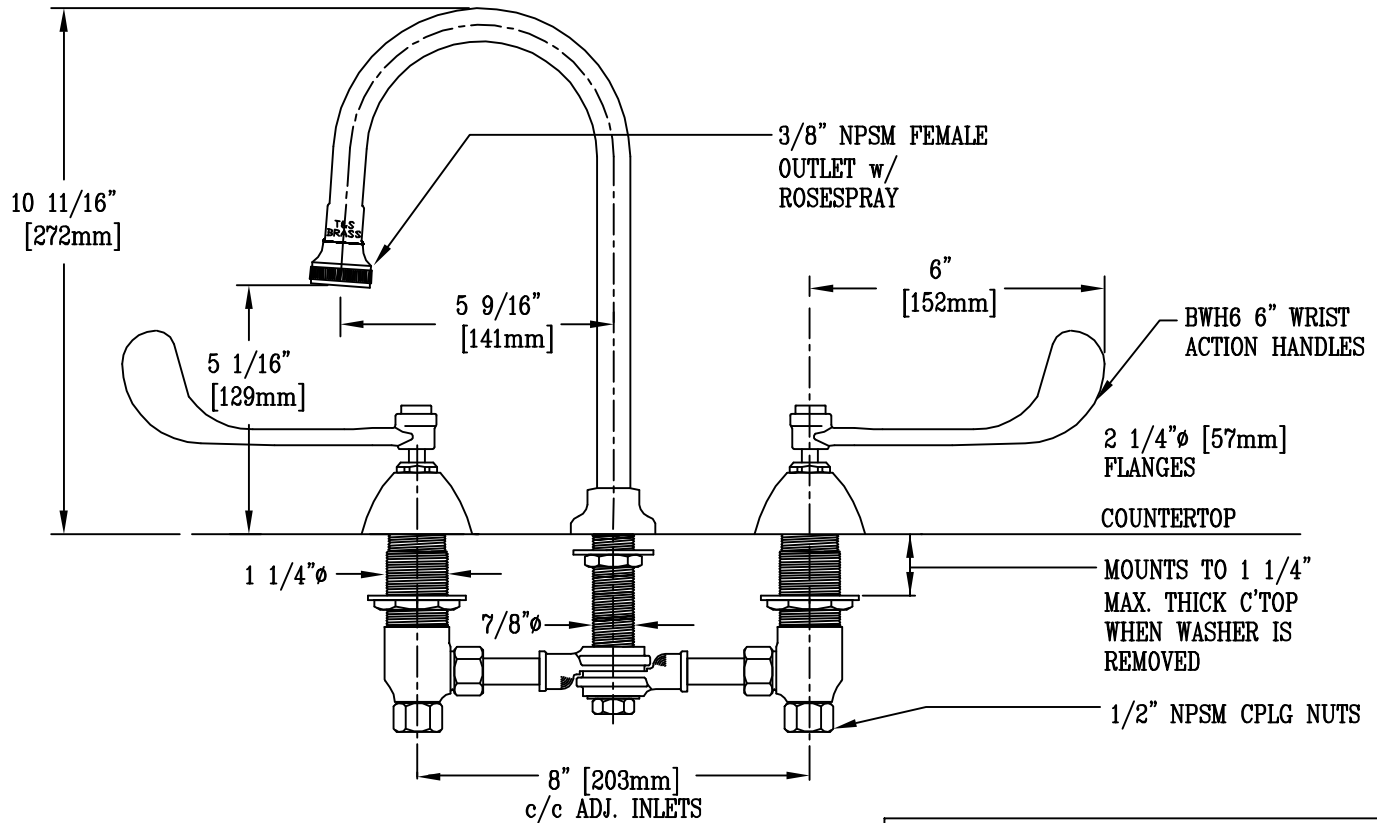
B-0865

Item No.:

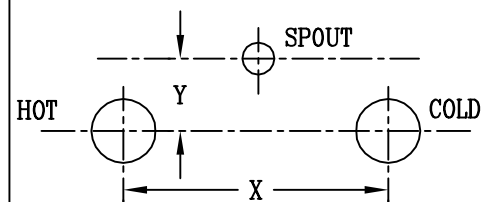
Job Name:

Architect/Engineer Approval:

Notes:



HOT & COLD CENTER SECTIONS CAN BE AT ANGLE



IF Y IS

THEN FAUCET WILL FIT X WITH STD. 1/4" IPS CROSS PIPES FURNISHED

1/2"

8"

1"

7 3/4"

1 1/2"

7 3/8"

2"

7"

NSF STANDARD 61, SECTION 9 CERTIFIED.

Product Description:

DECK MOUNTED MIXING FAUCET WITH 6" WRIST ACTION HANDLES, ADJUSTABLE INLET CENTERS, AND RIGID GOOSENECK w/ ROSESPRAY OUTLET

Drawn:

WJS

Checked

MVW

Scale:

1 : 4

Approved

MVW

Date:

6-16-99