



T&S BRASS AND BRONZE WORKS, INC.

2 SADDLEBACK COVE / P.O. BOX 1088 / TRAVELERS REST, SC 29690

PHONE 800-476-4103

FAX 864-834-3518



REG.#A2601
ISO #9002

Model No.

B-0866

Item No.:

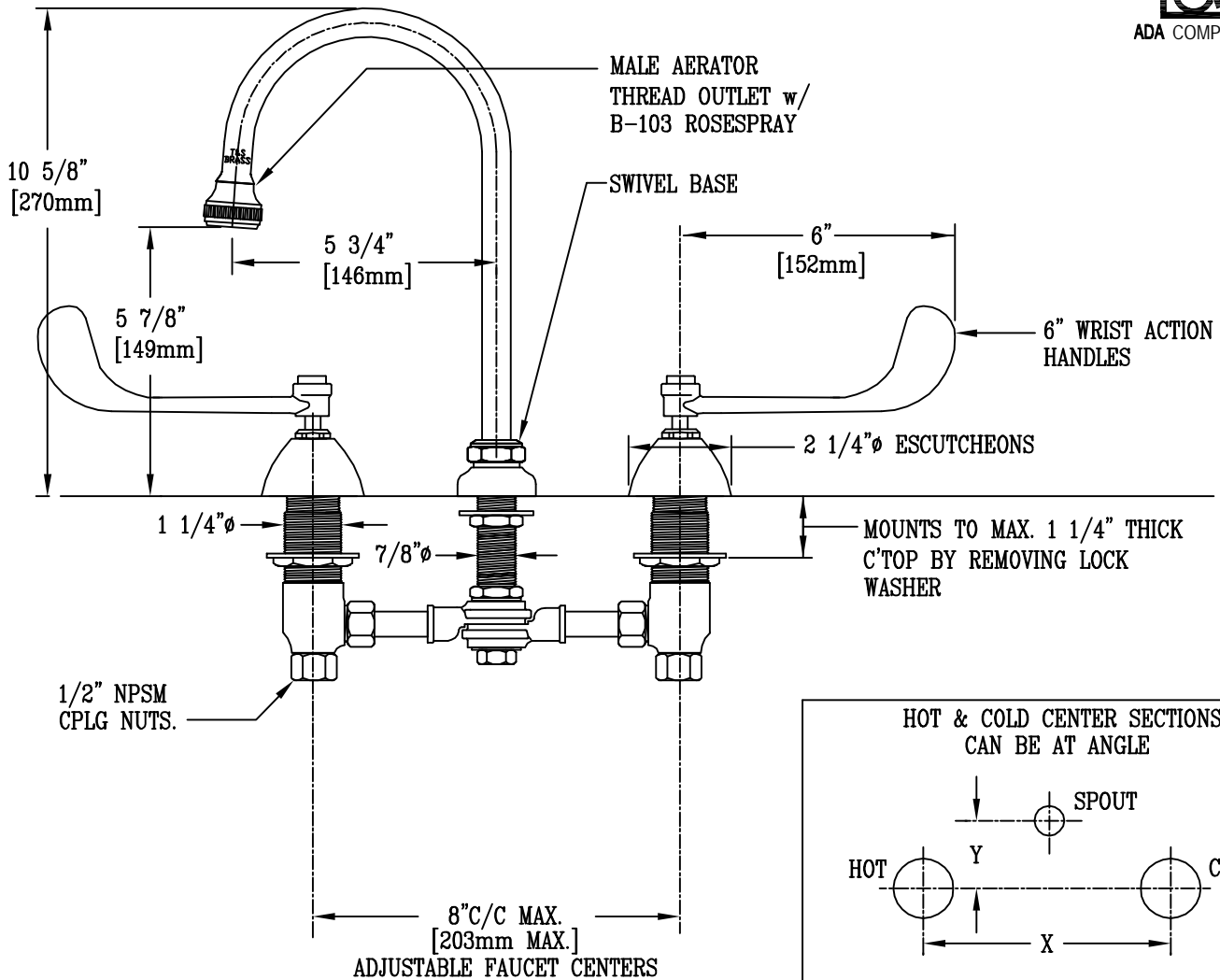
Job Name:

Architect/Engineer Approval:

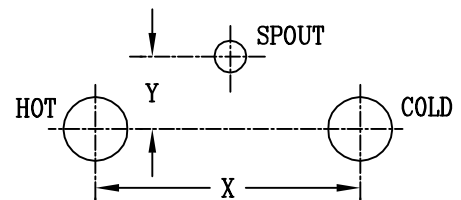
Notes:



ADA COMPLIANT



HOT & COLD CENTER SECTIONS
CAN BE AT ANGLE



IF "Y" IS

THEN FAUCET WILL
FIT "X" WITH STD. 1/4"
NPT CROSS PIPES
FURNISHED

1/2"	8"
1"	7 3/4"
1 1/2"	7 3/8"
2"	7"

NSF STANDARD 61, SECTION 9 CERTIFIED.

Product Description:

DECK MOUNTED MIXING FAUCET WITH 6" WRIST ACTION HANDLES, ADJUSTABLE INLET CENTERS, AND SWIVEL GOOSENECK WITH ROSESPRAY OUTLET

Drawn:

WJS

Checked

MVW

Scale:

1 : 4

Approved

MVW

Date:

6-15-99