



**T&S BRASS AND BRONZE WORKS, INC.**  
 2 SADDLEBACK COVE / P.O. BOX 1088 / TRAVELERS REST, SC 29690  
 PHONE 800-476-4103 - FAX 864- 834-3518

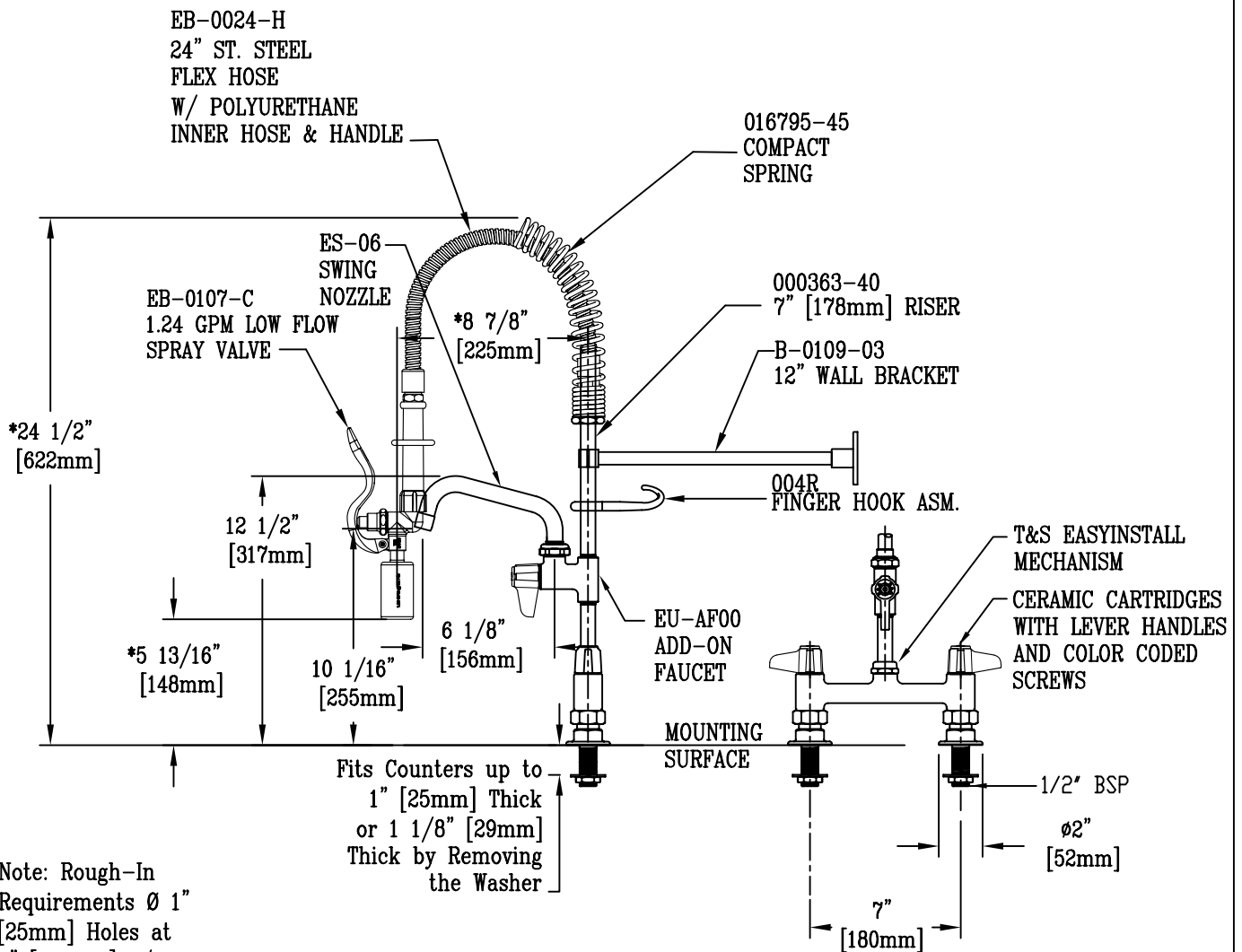


Model No.  
**EMPU-7DLN-06**  
**RELIABILITY**  
**BUILT IN**

Job Name:

Architect/Engineer Approval:

Notes:



Note: Rough-In  
 Requirements Ø 1"  
 [25mm] Holes at  
 7" [180mm] c/c

EPAAct2005 COMPLIANT

\* DIMENSIONS WILL VARY ± 1" EACH INSTALLATION

Product Description:  
 MINI PRE-RINSE, 7"[180mm] DECK MOUNT, 6" [154mm] ADD-ON FAUCET,  
 LOW FLOW SPRAY VALVE, 12" [305mm] WALL BRACKET,  
 24 3/16" [615mm] HEIGHT, 5 13/16" [148mm] CLEARANCE

Drawn: JRM	Checked GEF	Scale: 1 : 8
Approved JHB	Date: 03/20/08	